



Essential Validation Services



Sample:

Client: | Artisan Aromatics
Sample: | Cedarwood Atlas (Cedrus atlantica)
Batch # | Cedarwood Sample Report
CAS Number | 8023-85-6
Type: | Essential Oil

Conclusion:

- No adulterants, diluents, or contaminants were detected via this method.
- This oil meets the expected profile for genuine essential oil of Cedarwood Atlas (Cedrus atlantica).



X

Validated By:

Essential Validation Services

747 SW 2nd Ave, Gainesville, FL 32601

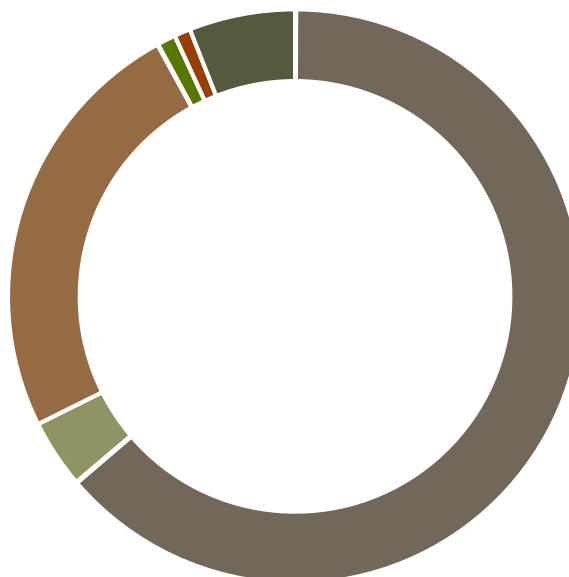
Phone: 317-361-5044 E-mail: Adam@essentialvalidationservices.com

Summary of Analyses

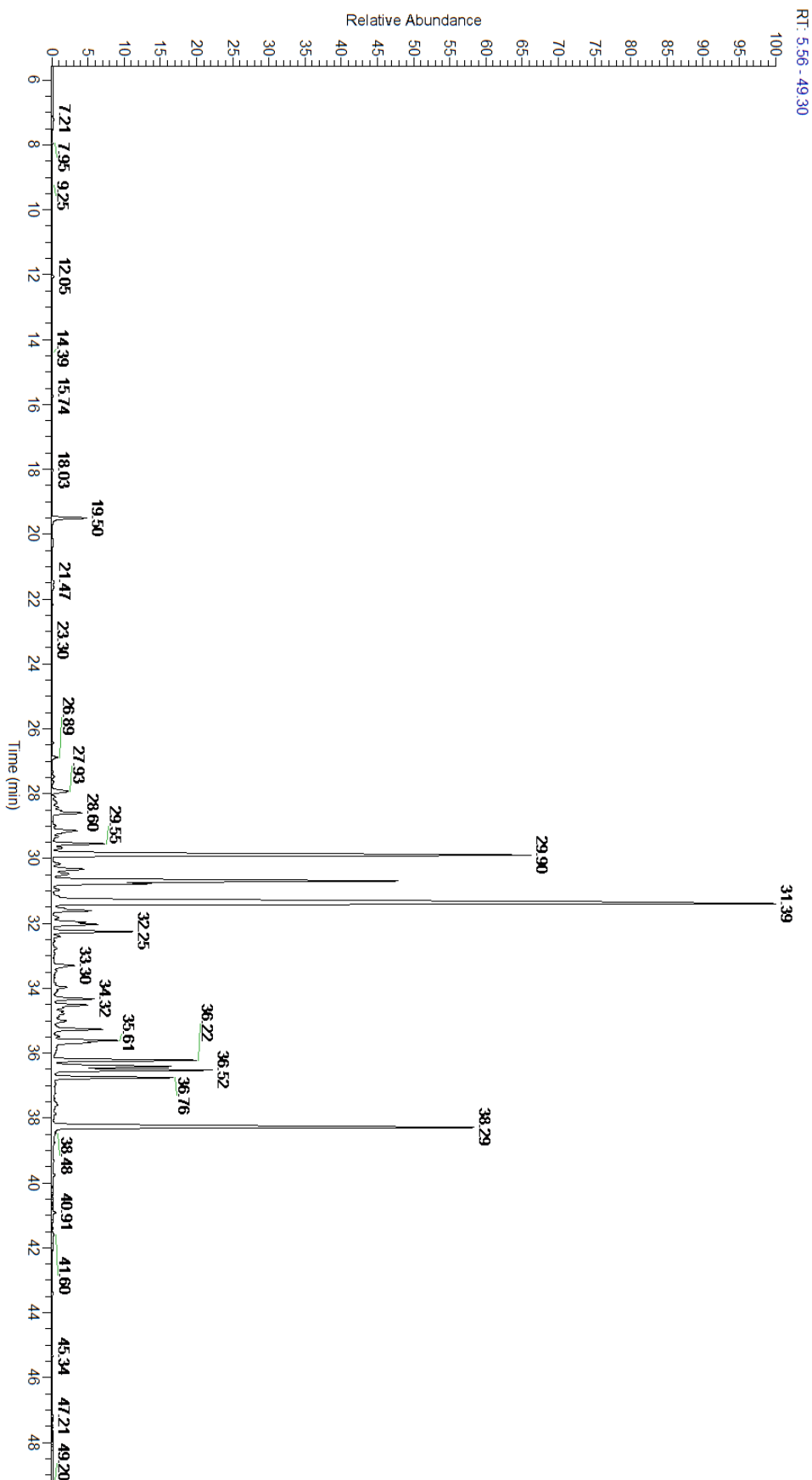
A fresh sample of Cedarwood Atlas (Cedrus atlantica) Essential Oil (10 uL in .5 to .5 mL Hexane + ETOH) was prepared and analyzed via split injection GC/EI-MS.

Main Compounds	Percentages
beta-Himachalene	29.94%
alpha-Himachalene	13.78%
(E)-alpha-Atlantone	11.96%
gamma-Himachalene	9.17%
(E)-gamma-Atlantone	3.56%
(Z)-gamma-Atlantone	3.22%
Deodarone	3.03%
(Z)-alpha-Atlantone	2.58%
Himachala-2,4-diene	1.82%
alpha-Calacorene	1.78%
Allohimachalol	1.47%
Himachalol	1.20%
Vestitenone?	1.19%

Monoterpenes	Sesquiterpenes	Monoterpenols	Sesquiterpenols	Ketones
0.06%	63.68%	0.06%	3.86%	24.38%
Esters	Ethers	Aldehydes	Phenols	Other
0.04%	1.04%	0.00%	0.91%	5.97%



- Monoterpenes ■ Sesquiterpenes ■ Monoterpenols
- Sesquiterpenols ■ Ketones ■ Esters
- Ethers ■ Phenols ■ Other





Total Percentage		94.03%			
Peak Number	RT	Area %	Compound Name	RI	Chemical Family
1	12.05	0.03%	alpha-Pinene	936.10	Monoterpene
2	15.74	0.01%	Limonene	1029.50	Monoterpene
3	18.03	0.02%	para-Cymenene	1092.43	Monoterpene
4	19.50	0.84%	Limona ketone	1134.50	Simple Phenolic
5	21.47	0.07%	para-Methylacetophenone	1186.50	Simple Phenolic
6	21.63	0.06%	alpha-Terpineol	1191.71	Monoterpenol
7	26.89	0.11%	alpha-Longipinene	1357.90	Sesquiterpene
8	27.48	0.05%	alpha-Ylangene	1371.33	Sesquiterpene
9	27.64	0.04%	Geranyl acetate	1378.50	Monoterpene Ester
10	28.28	0.18%	Sativene	1395.00	Sesquiterpene
11	28.42	0.16%	Sibirene	1401.20	Sesquiterpene
12	28.60	0.70%	Longifolene	1403.83	Sesquiterpene
13	28.98	0.08%	alpha-Cedrene	1410.75	Sesquiterpene
14	29.15	0.82%	Thujopsene	1429.50	Sesquiterpene
15	29.32	0.17%	trans-alpha-Bergamotene	1435.00	Sesquiterpene
16	29.55	1.19%	Vestitenone?		
17	29.67	0.27%	6,9-Guaiadiene	1446.00	Sesquiterpene
18	29.90	13.78%	alpha-Himachalene	1448.40	Sesquiterpene
19	30.33	0.92%	Thujopsadiene	1465.10	Sesquiterpene
20	30.48	0.46%	gamma-Curcumene	1476.00	Sesquiterpene
21	30.69	9.17%	gamma-Himachalene	1476.50	Sesquiterpene
22	30.77	1.82%	Himachala-2,4-diene	1476.80	Sesquiterpene
23	30.97	0.13%	Bicyclogermacrene	1490.71	Sesquiterpene
24	31.39	29.94%	beta-Himachalene	1497.75	Sesquiterpene
25	31.61	1.04%	alpha-Dehydro-ar-himachalene	1516.00	Sesquiterpene
26	31.82	0.17%	delta-Cadinene	1524.14	Sesquiterpene
27	31.96	0.70%	trans-Calamenene	1529.50	Sesquiterpene
28	32.03	1.06%	gamma-Vetivenene	1532.00	Sesquiterpene
29	32.25	1.78%	alpha-Calacorene	1537.14	Sesquiterpene
30	32.40	0.15%	beta-Calacorene	1555.50	Sesquiterpene
31	32.52	0.03%	(E)-Nerolidol	1567.00	Sesquiterpenol
32	32.76	0.10%	Himachalene oxide	1578.00	Sesquiterpene Ether
33	33.97	0.35%	Longiborneol	1586.50	Sesquiterpenol
34	34.32	0.94%	beta-Himachalene oxide	1595.95	Sesquiterpene Ether
35	34.52	0.81%	1,10-di-epi-Cubenol	1612.29	Sesquiterpenol
36	35.27	1.20%	Himachalol	1648.50	Sesquiterpenol
37	35.61	1.47%	Allohimachalol	1660.00	Sesquiterpenol
38	35.97	0.02%	Cadalene	1666.00	Sesquiterpene
39	36.22	3.22%	(Z)-gamma-Atlantone	1683.00	Sesquiterpene Ketone
40	36.41	3.03%	Deodarone	1693.50	Sesquiterpene Ketone
41	36.52	3.56%	(E)-gamma-Atlantone	1697.00	Sesquiterpene Ketone
42	36.76	2.58%	(Z)-alpha-Atlantone	1707.50	Sesquiterpene Ketone
43	38.29	11.96%	(E)-alpha-Atlantone	1773.10	Sesquiterpene Ketone

