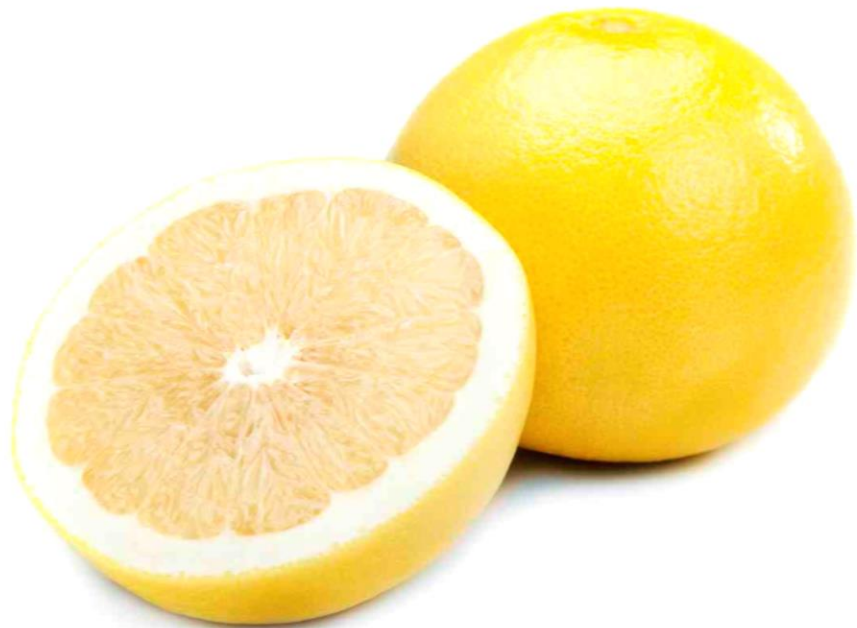




Essential Validation Services



Sample:

Client: | Artisan Aromatics
Sample: | Grapefruit, White (Citrus paradisi)
Batch # | Grapefruit, White Sample Report
CAS Number | 8016-20-4
Type: | Essential Oil

Conclusion:

- No adulterants, diluents, or contaminants were detected via this method.
- This oil meets the expected profile for genuine essential oil of Grapefruit, White (Citrus paradisi).



X

Validated By:

Essential Validation Services

747 SW 2nd Ave, Gainesville, FL 32601

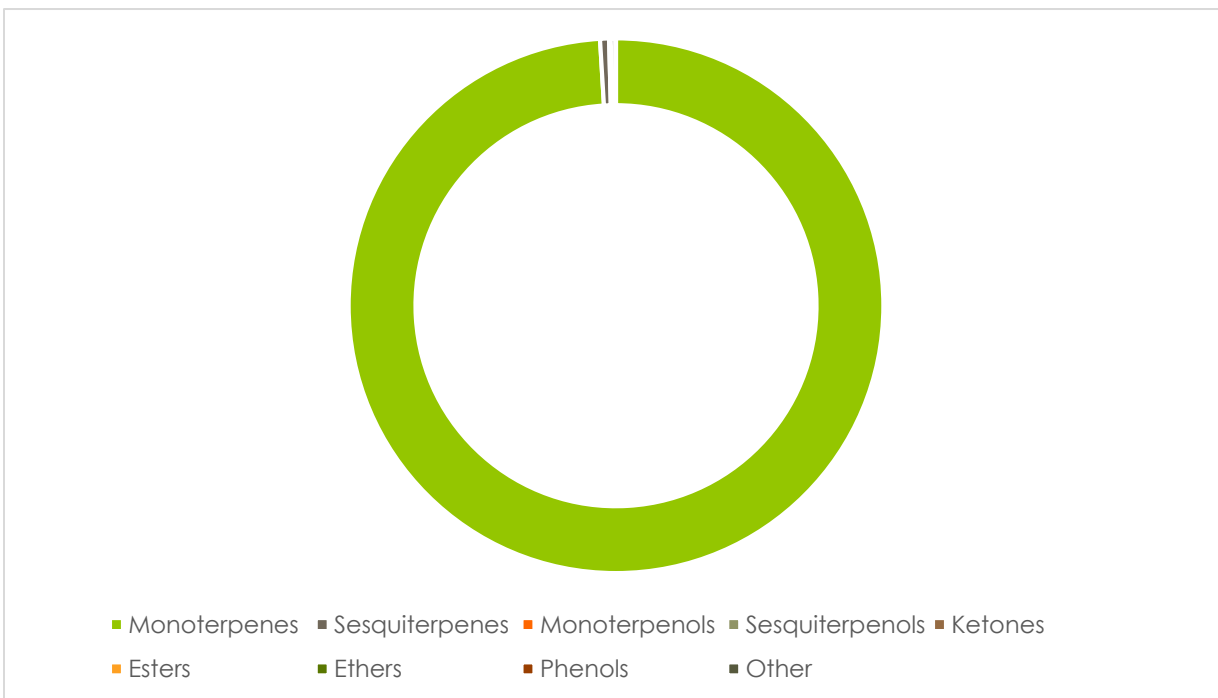
Phone: 317-361-5044 E-mail: Adam@essentialvalidationservices.com

Summary of Analyses

A fresh sample of Grapefruit, White (Citrus paradisi) Essential Oil (10 uL in .5to.5 mL Hexane + ETOH) was prepared and analyzed via split injection GC/EI-MS.

Main Compounds	Percentages
Limonene	96.94%
Myrcene	0.82%

Monoterpenes	Sesquiterpenes	Monoterpenols	Sesquiterpenols	Ketones
98.55%	0.54%	0.05%	0.03%	0.00%
Esters	Ethers	Aldehydes	Phenols	Other
0.01%	0.01%	0.28%	0.00%	0.03%



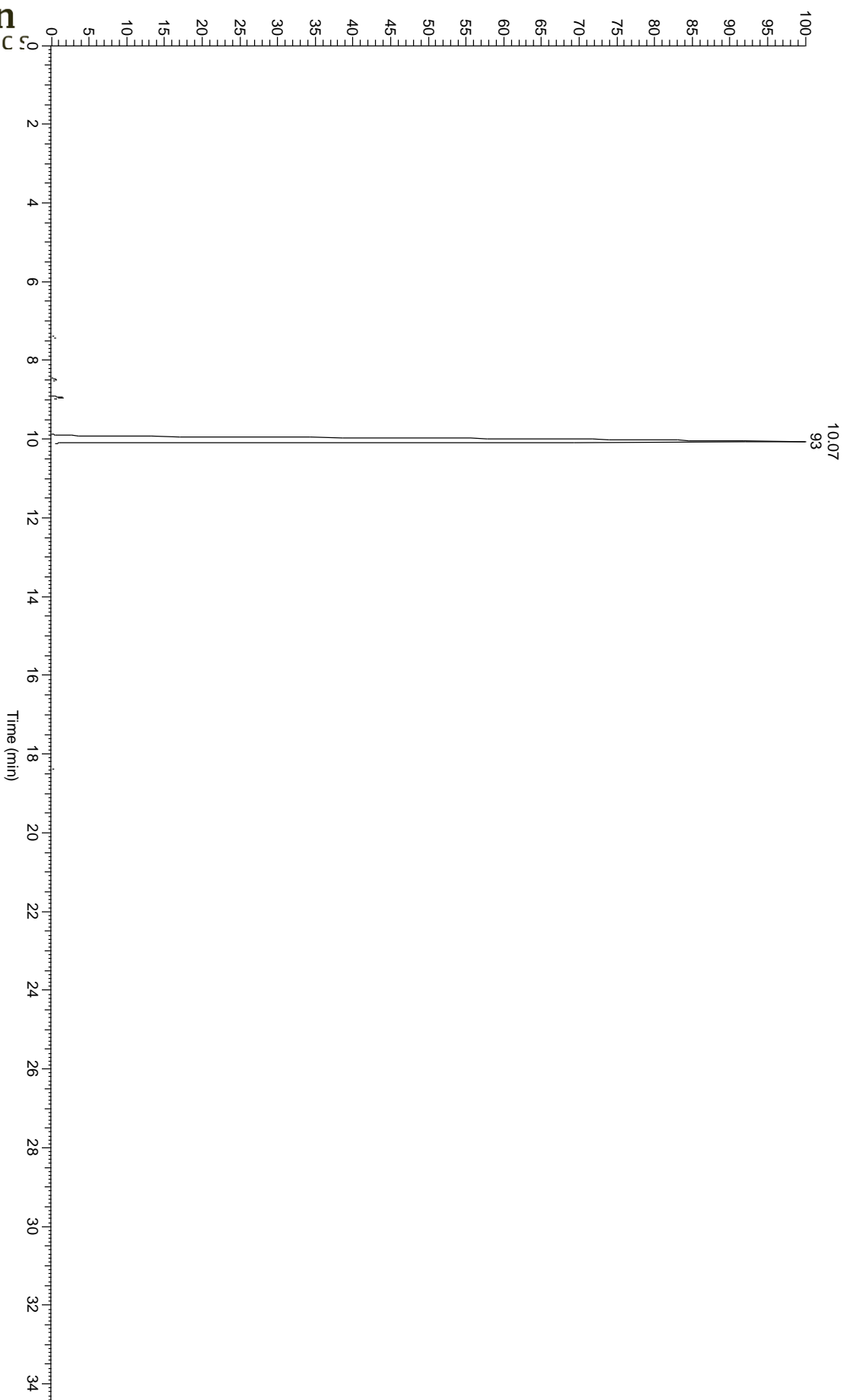


Artisan
AROMATIC

Grapefruit, White (Citrus paradisi)

3

RT: 0.00 - 35.58



ESSENTIAL VALIDATION SERVICES | 747 SW 2ND AVE GAINESVILLE, FLORIDA 32601 | 317-361-5044

Essential Validation Services

- This report is the digitally signed and will only be considered valid if the signature is intact.
- This report may not be published without the consent of Essential Validation Services.
- Chromatograph image may not show full run time



ESSENTIAL VALIDATION SERVICES | 747 SW 2ND AVE GAINESVILLE, FLORIDA 32601 | 317-361-5044

Total Percentage	99.50%				
Peak Number	RT	Area %	Compound Name	RI	Chemical Family
1	7.42	0.30%	alpha-Thujene	935.43	Monoterpenes
2	8.49	0.34%	Sabinene	975.71	Monoterpenes
3	8.6	0.04%	beta-Pinene	979.00	Monoterpenes
4	8.94	0.82%	Myrcene	990.57	Monoterpenes
5	9.39	0.19%	Octanal	1002.43	Aldehydes
6	10.07	96.94%	Limonene	1032.00	Monoterpenes
7	10.07	Co-Eluting	1,8-Cineole	1033.29	Ethers
8	10.42	0.10%	(E)-beta-Ocimene	1049.00	Monoterpenes
9	10.59	0.01%	gamma-Terpinene	1063.71	Monoterpenes
10	11.26	0.01%	1-Octanol	1075.14	Monoterpenols
11	11.72	0.02%	Linalool	1101.14	Monoterpenols
12	12.34	0.01%	cis-Limonene oxide	1134.00	Ethers
13	13.94	0.02%	alpha-Terpineol	1191.71	Monoterpenols
14	14.16	0.07%	Decanal	1206.57	Aldehydes
15	15.86	0.01%	Perilla aldehyde	1281.00	Aldehydes
16	16.02	0.01%	Undecanal	1305.29	Aldehydes
17	16.67	0.01%	delta-Elemene	1335.83	Sesquiterpenes
18	17.53	0.07%	alpha-Copaene	1379.00	Sesquiterpenes
19	17.66	0.01%	Geranyl acetate	1384.71	Esters
20	17.77	0.09%	beta-Elemene	1388.30	Sesquiterpenes
21	18.39	0.19%	beta-Caryophyllene	1427.14	Sesquiterpenes
22	18.57	0.01%	beta-Caryophyllene	1427.14	Sesquiterpenes
23	18.98	0.01%	(Z)-beta-Farnesene	1453.40	Sesquiterpenes
24	19.06	0.03%	alpha-Humulene	1461.43	Sesquiterpenes
25	19.52	0.03%	Germacrene D	1484.71	Sesquiterpenes
26	19.79	0.02%	beta-Bisabolene	1509.86	Sesquiterpenes
27	20.15	0.08%	delta-Cadinene	1524.14	Sesquiterpenes
28	20.71	0.03%	Elemol	1548.57	Sesquiterpenols
29	24.95	0.03%	Nootkatone	1799.00	Ketones
30	24.95	Co-Eluting	Farnesol Isomer	#N/A	#N/A

- This report is the digitally signed and will only be considered valid if the signature is intact.
- This report may not be published without the consent of Essential Validation Services.
- Chromatograph image may not show full run time