



## *Essential Validation Services*



## Sample:

---

Client: | Artisan Aromatics  
Sample: | Lavandin Grosso (Lavandula x grosso)  
Batch # | Lavandin Grosso Sample Report  
CAS Number | 8022-15-9  
Type: | Essential Oil

---

## Conclusion:

- No adulterants, diluents, or contaminants were detected via this method.
- This oil meets the expected profile for genuine essential oil of Lavandin Grosso (Lavandula x grosso).



X

Validated By:

Essential Validation Services

747 SW 2nd Ave, Gainesville, FL 32601

Phone: 317-361-5044 E-mail: [Adam@essentialvalidationservices.com](mailto:Adam@essentialvalidationservices.com)

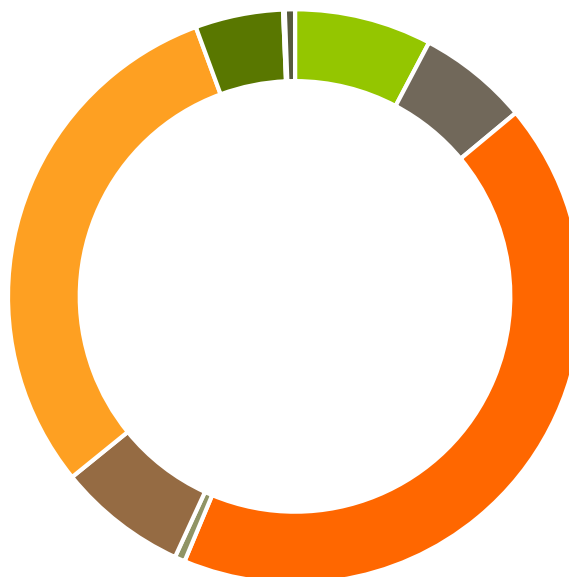
## Summary of Analyses

---

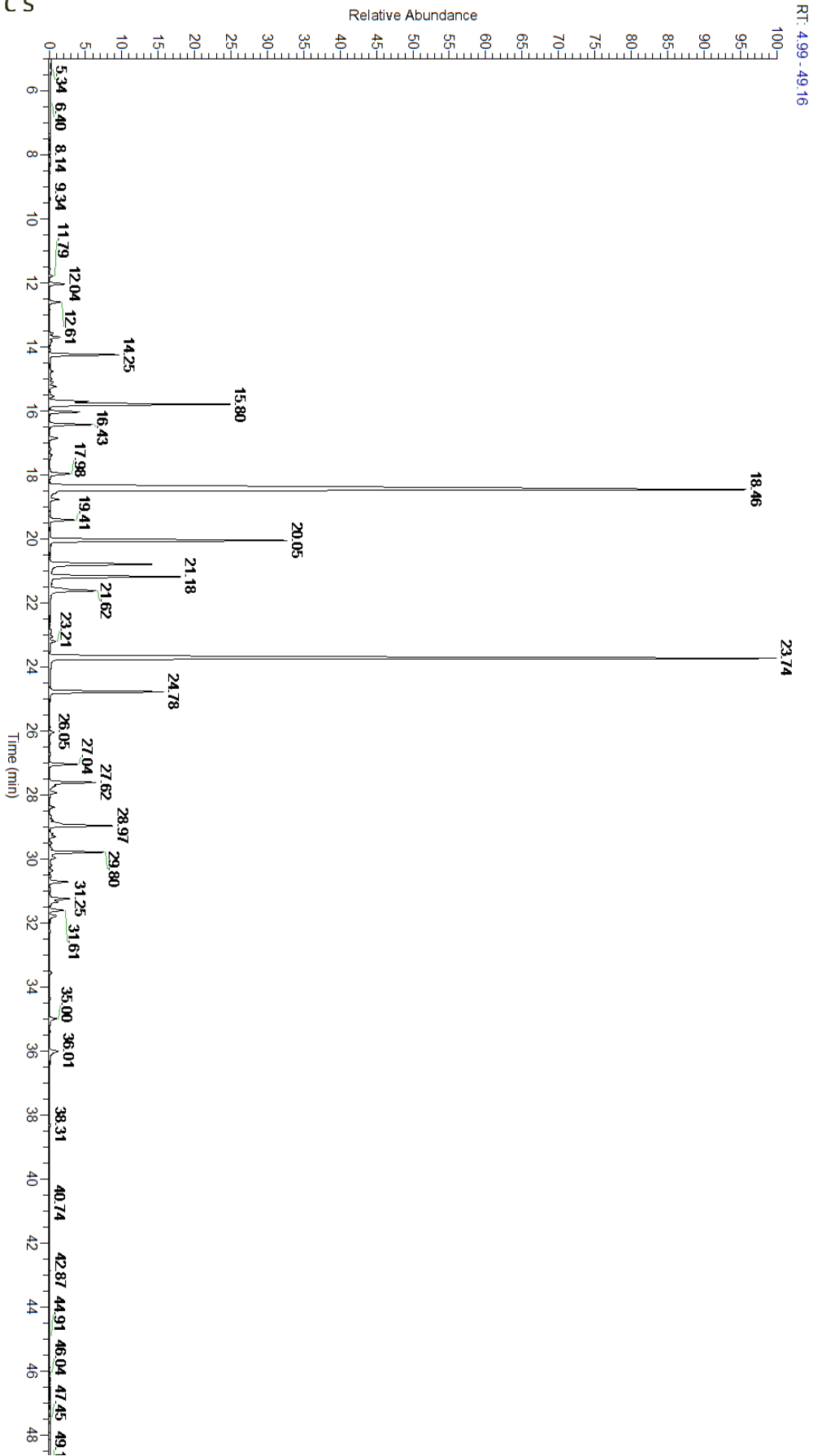
A fresh sample of Lavandin Grosso (Lavandula x grosso) Essential Oil (10 uL in .5to.5 mL Hexane + ETOH) was prepared and analyzed via split injection GC/EI-MS.

Main Compounds	Percentages
Linalool	32.98%
Linalyl acetate	24.33%
Camphor	7.29%
1,8-Cineole	4.89%
Terpinen-4-ol	3.92%
Borneol	3.48%
Lavandulyl acetate	2.98%
beta-Caryophyllene	2.06%
alpha-Terpineol	1.75%
Myrcene	1.74%
(Z)-beta-Farnesene	1.45%
Geranyl acetate	1.26%
(E)-beta-Ocimene	1.11%

Monoterpenes	Sesquiterpenes	Monoterpenols	Sesquiterpenols	Ketones
7.73%	6.23%	42.33%	0.58%	7.29%
Esters	Ethers	Aldehydes	Phenols	Other
30.22%	4.95%	0.10%	0.00%	0.57%



- Monoterpenes   ■ Sesquiterpenes   ■ Monoterpenols
- Sesquiterpenols   ■ Ketones   ■ Esters
- Ethers   ■ Phenols   ■ Other





Total Percentage		99.49%			
Peak Number	RT	Area %	Compound Name	RI	Chemical Family
1	11.79	0.07%	alpha-Thujene	927.80	Monoterpene
2	12.04	0.41%	alpha-Pinene	936.10	Monoterpene
3	12.61	0.29%	Camphene	950.30	Monoterpene
4	13.59	0.08%	Sabinene	973.00	Monoterpene
5	13.70	0.27%	beta-Pinene	974.00	Monoterpene
6	13.82	0.06%	1-Octen-3-ol	980.00	Aliphatic Alcohol
7	14.25	1.74%	Myrcene	989.20	Monoterpene
8	14.46	0.01%	Butyl butyrate	993.00	Aliphatic Ester
9	14.76	0.07%	alpha-Phellandrene	1002.00	Monoterpene
10	15.00	0.04%	delta-3-Carene	1008.00	Monoterpene
11	15.11	0.08%	Hexyl acetate	1009.00	Aliphatic Ester
12	15.24	0.18%	alpha-Terpinene	1014.00	Monoterpene
13	15.46	0.02%	meta-Cymene	1022.00	Monoterpene
14	15.54	0.12%	para-Cymene	1024.30	Monoterpene
15	15.71	1.05%	Limonene	1029.50	Monoterpene
16	15.80	4.89%	1,8-Cineole	1031.80	Monoterpene Ether
17	16.03	0.76%	(Z)-beta-Ocimene	1037.80	Monoterpene
18	16.43	1.11%	(E)-beta-Ocimene	1047.70	Monoterpene
19	16.86	0.22%	gamma-Terpinene	1054.00	Monoterpene
20	17.19	0.03%	trans-Sabinene hydrate	1072.00	Monoterpenol
21	17.38	0.06%	cis-Linalool oxide (5) (furanoid)	1075.10	Monoterpenol
22	17.98	0.60%	Terpinolene	1092.10	Monoterpene
23	18.46	32.98%	Linalool	1099.00	Monoterpenol
24	18.56	0.08%	Nonanal	1104.00	Aliphatic Aldehyde
25	18.77	0.34%	Octen-3-yl acetate	1107.00	Monoterpene Ester
26	19.41	0.70%	Alloocimene	1129.90	Monoterpene
27	20.05	7.29%	Camphor	1147.55	Monoterpene Ketone
28	20.79	3.48%	Borneol	1168.71	Monoterpenol
29	21.18	3.92%	Terpinen-4-ol	1180.57	Monoterpenol
30	21.42	0.05%	para-Cymen-8-ol	1185.25	Monoterpenol
31	21.62	1.75%	alpha-Terpineol	1191.71	Monoterpenol
32	21.83	0.02%	Myrtenal	1200.43	Monoterpene Aldehyde
33	22.24	0.01%	Octyl acetate	1211.00	Aliphatic Ester
34	22.90	0.06%	Nerol	1230.67	Monoterpenol
35	23.05	0.07%	Hexyl 3-methylbutanoate	1242.00	Monoterpene Ester
36	23.74	24.33%	Linalyl acetate	1263.80	Monoterpene Ester
37	24.78	2.98%	Lavandulyl acetate	1285.00	Monoterpene Ester
38	26.05	0.12%	Hexyl tiglate	1331.00	Monoterpene Ester
39	26.71	0.01%	alpha-Terpinyl acetate	1353.00	Monoterpene Ether
40	27.04	0.73%	Neryl acetate	1362.90	Monoterpene Ester
41	27.62	1.26%	Geranyl acetate	1378.50	Monoterpene Ester
42	27.71	0.20%	Methyl cinnamate	1380.60	Phenylpropanoid Ester
43	27.93	0.19%	beta-Bourbonene	1388.70	Sesquiterpene



**Artisan**  
AROMATIC S

44	28.05	0.01%	beta-Elemene	1389.20	Sesquiterpene
45	28.38	0.11%	Sesquithujene	1405.00	Sesquiterpene
46	28.67	0.05%	cis-alpha-Bergamotene	1411.50	Sesquiterpene
47	28.79	0.08%	Lavandulyl isobutyrate	1420.50	Monoterpene Ester
48	28.97	2.06%	beta-Caryophyllene	1427.14	Sesquiterpene
49	29.31	0.15%	trans-alpha-Bergamotene	1435.00	Sesquiterpene
50	29.51	0.04%	beta-Copaene	1445.00	Sesquiterpene
51	29.80	1.45%	(Z)-beta-Farnesene	1453.40	Sesquiterpene
52	29.97	0.19%	alpha-Humulene	1461.43	Sesquiterpene
53	30.20	0.04%	beta-Santalene	1464.00	Sesquiterpene
54	30.54	0.02%	gamma-Murolene	1478.86	Sesquiterpene
55	30.72	0.51%	Germacrene D	1484.71	Sesquiterpene
56	31.25	0.57%	(E,E)-alpha-Farnesene	1508.14	Sesquiterpene
57	31.34	0.23%	beta-Bisabolene	1509.86	Sesquiterpene
58	31.42	0.01%	Lavandulyl 2-methylbutyrate	1514.10	Monoterpene Ester
59	31.61	0.37%	gamma-Cadinene	1515.29	Sesquiterpene
60	31.79	0.24%	beta-Sesquiphellandrene	1524.57	Sesquiterpene
61	33.57	0.05%	Caryophyllene oxide	1594.86	Sesquiterpene Ether
62	34.36	0.01%	1,10-di-epi-Cubenol	1612.29	Sesquiterpenol
63	35.00	0.22%	T-Cadinol	1640.43	Sesquiterpenol
64	36.01	0.35%	beta-Bisabolol	1666.25	Sesquiterpenol

ESSENTIAL VALIDATION SERVICES | 747 SW 2ND AVE GAINESVILLE, FLORIDA 32601 | 317-361-5044

- This report is the digitally signed and will only be considered valid if the signature is intact.  
 - This report may not be published without the consent of Essential Validation Services.  
 - Chromatograph image may not show full run time