

Artisan Aromatics

GC/MS Report Method: Percentage (%)

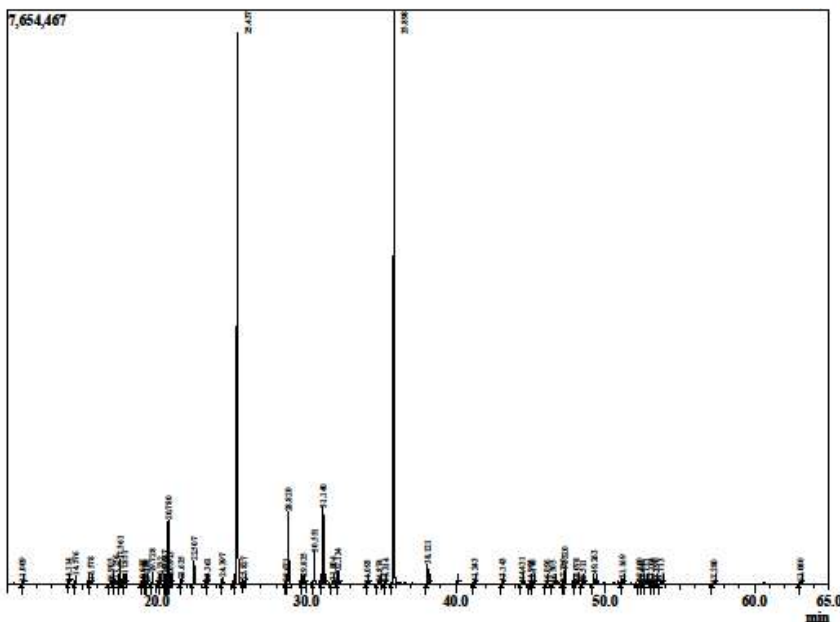
Essential Oil: Lavender France

Botanical Name: Lavandula angustifolia

Country of Origin: France

Date: Current Stock

PHYSICAL APPEARANCE: A clear pale straw colored liquid.
SENSORY EVALUATION: Sharp, floral, herbaceous, woody.
SOLUBILITY: Soluble in ethanol according to the relevant ISO standard.



R.Time	Name	Area%
11.009	Hexanol -n->	0.09
14.114	Thymene -alpha->	0.09
14.376	Pinene -alpha->	0.48
15.378	Camphene	0.18
16.905	Sabinene	0.09
17.256	Pinene -beta->	0.44
17.561	3-Octanone	1.06
17.851	Myrcene	0.48
19.037	Phellandrene -alpha->	0.07
19.190	3-Caradiene	0.04
19.285	Hexyl acetate	0.05
19.728	Terpinene -alpha->	0.56
20.252	Cymene -para->	0.18
20.547	Limonene	0.48
20.680	Phellandrene -beta->	0.06
20.780	1,8-Cineole	2.86
20.913	Octinene -Z-beta->	0.42
21.635	Octinene -E-beta->	0.22
22.507	Terpinene -gamma->	1.17
23.361	Linalool oxide -cis-(furanoid)->	0.13
24.397	Terpinolene	0.50
25.437	Linalool	38.10
25.827	Octyl-3-yl acetate -1->	0.15
28.671	Isobutyrate -hexyl->	0.09
28.820	Camphor	3.69
29.835	Lavandulol	0.44
30.551	Borneol	1.75
31.140	Terpinen-4-ol	3.82
31.804	Butanoic acid, hexyl ester	0.25
32.134	Terpinol -alpha->	0.70
34.093	Nerol	0.07
34.874	Hexyl 2-methylbutyrate	0.06
35.314	Butanoic acid, hexyl ester	0.12
35.898	Linalyl acetate	35.92
38.121	Lavandulyl acetate	1.06
41.243	Tiglate -hexyl->	0.13
43.143	Neryl acetate	0.16
44.431	Geranyl acetate	0.23
44.995	Bourbonene -beta->	0.05
45.178	Sesquithimene -7-epi->	0.05
46.096	Bergamotene -cis-alpha->	0.06
46.505	Geraniene -alpha->	0.04
47.210	Santalene -alpha->	0.10
47.320	Caryophyllene -trans->	0.84
48.078	Bergamotene -trans-alpha->	0.24
48.511	Copaene -beta->	0.13
49.263	Farnesene -(E)-, beta->	0.61
51.169	Germacraene D	0.35
52.300	Lavandulyl isovalerate	0.21
52.441	Farnesene -alpha->	0.16
52.731	Bisabolene -beta->	0.14
53.104	Cadinene -gamma->	0.16
53.390	Cadinene -delta->	0.07
53.713	Sesquiphellandrene -beta->	0.15
57.280	Caryophyllene oxide	0.07
63.080	Bisabolol -alpha->	0.19