



**Artisan Aromatics**  
1708 Lena Street, #103  
Santa Fe, NM 87505  
(505) 231-9439

Page 1 (8)  
Issue date: 07/12/2022  
Version: 1 (07/12/2022)

## SAFETY DATA SHEET

In accordance with 29 CFR 1910.1200

**Product:** NOP Cinnamon Leaf EO, Cinnamomum zeylanicum <NOP Certified Organic>

**Version:**

1

### 1. IDENTIFICATION

#### Product Identifier

**Product identifier:** NOP Cinnamon Leaf EO, Cinnamomum zeylanicum <NOP Certified Organic>; CAS: 8015-91-6

**Other identifiers:** NOP Cinnamon Leaf EO, Cinnamomum zeylanicum <NOP Certified Organic> COCinZel7  
Cinnamomum zeylanicum

#### Recommended use of the chemical and restrictions on use

**Product uses:** Essential Oil

#### Supplier Details

**Company name:** Artisan Aromatics  
**Company address:** 1708 Lena Street, #103  
Santa Fe, NM 87505

**Contact:** Stephanie Ariel

**E-Mail address:** hello@artisanaromatics.com

**Company phone:** 505-231-9439

#### Emergency telephone number

**Emergency phone:** ChemTel: 1-800-255-3924 (Domestic)

### 2. HAZARD IDENTIFICATION

#### Classification

**This product is classified under 29CFR 1910.1200(d) as follows:**

This material is considered hazardous by the OSHA Hazard Communication Standard (29 CFR 1910.1200)

**Class and category of** Flammable Liquid, Hazard Category 4  
**danger:**

Eye Damage / Irritation Category 2A

Sensitization - Skin Category 1

Germ Cell Mutagenicity Category 2

Carcinogenicity Category 1B

**Signal word:** Danger

**Hazard statements:** Combustible liquid.

May cause an allergic skin reaction.

Causes serious eye irritation.

Suspected of causing genetic defects (exposure route).

May cause cancer (exposure route).

**M factor:** None

## SAFETY DATA SHEET

In accordance with 29 CFR 1910.1200

**Product:** NOP Cinnamon Leaf EO, Cinnamomum zeylanicum <NOP Certified Organic>

**Version:** 1

**Pictograms:**



**Precautionary statements:**

Do not handle until all safety precautions have been read and understood.  
Keep away from heat, sparks, open flames and hot surfaces. - No smoking.  
Avoid breathing vapour or dust.  
Wash hands and other contacted skin thoroughly after handling.  
Contaminated work clothing should not be allowed out of the workplace.  
Wear protective gloves/eye protection/face protection.  
IF ON SKIN: Wash with plenty of soap and water.  
IF IN EYES: Rinse cautiously with water for several minutes. Remove contact lenses, if present and easy to do. Continue rinsing.  
IF exposed or concerned: Get medical advice/attention.  
If skin irritation or rash occurs: Get medical advice/attention.  
If eye irritation persists: Get medical advice/attention.  
Wash contaminated clothing before reuse.  
In case of fire: Use carbon dioxide, dry chemical, foam for extinction.  
Store in a well-ventilated place. Keep cool.  
Store locked up.  
Dispose of contents/container to approved disposal site, in accordance with local regulations.

**Hazards not otherwise classified (HNOC)** None

### 3. COMPOSITION/INFORMATION ON INGREDIENTS

#### Substances

**Product identifier:** NOP Cinnamon Leaf EO, Cinnamomum zeylanicum <NOP Certified Organic>; CAS: 8015-91-6

## SAFETY DATA SHEET

In accordance with 29 CFR 1910.1200

**Product:** NOP Cinnamon Leaf EO, Cinnamomum zeylanicum <NOP Certified Organic>

**Version:** 1

**Contains:**

Name	CAS	%	GHS Classification
Eugenol	97-53-0	50-100%	Eye Irrit. 2A-Skin Sens. 1B;H317-H319
beta-Caryophyllene	87-44-5	5-<10%	Skin Sens. 1B-Asp. Tox 1;H304-H317
Benzyl benzoate	120-51-4	1-<5%	Acute Tox. 4;H302
Eugenyl acetate	93-28-7	1-<5%	Acute Tox. 4;H302
Linalool	78-70-6	1-<5%	Flam. Liq. 4-Skin Irrit. 2-Eye Irrit. 2A-Skin Sens. 1B;H227-H315-H317-H319
Cinnamaldehyde	104-55-2	1-<5%	Acute Tox. 4-Skin Irrit. 2-Eye Irrit. 2A-Skin Sens. 1A;H312-H315-H317-H319
d-Limonene	5989-27-5	0.1-<1%	Flam. Liq. 3-Skin Irrit. 2-Skin Sens. 1B-Asp. Tox 1;H226-H304-H315-H317
Eucalyptol	470-82-6	0.1-<1%	Flam. Liq. 3-Skin Sens. 1B;H226-H317
alpha-Pinene	80-56-8	0.1-<1%	Flam. Liq. 3-Acute Tox. 4-Skin Irrit. 2-Skin Sens. 1B-Asp. Tox 1;H226-H302-H304-H315-H317
alpha-Humulene	6753-98-6	0.1-<1%	Skin Sens. 1B-Asp. Tox 1;H304-H317
beta-Pinene	127-91-3	0.1-<1%	Flam. Liq. 3-Skin Irrit. 2-Skin Sens. 1B-Asp. Tox 1;H226-H304-H315-H317
delta-3-Carene	13466-78-9	<0.1%	Flam. Liq. 3-Skin Irrit. 2-Skin Sens. 1-Asp. Tox 1;H226-H304-H315-H317

The exact percentage concentrations of components are being withheld as a trade secret.

### 4. FIRST-AID MEASURES

#### Description of first aid measures

**Inhalation:** Remove from exposure site to fresh air, keep at rest, and obtain medical attention.

**Eye exposure:** IF IN EYES: Rinse cautiously with water for several minutes. Remove contact lenses, if present and easy to do. Continue rinsing.

**Skin exposure:** IF ON SKIN: Wash with plenty of soap and water.

**Ingestion:** Rinse mouth with water and obtain medical attention.

#### Most important symptoms and effects, both acute and delayed

May cause an allergic skin reaction.

Causes serious eye irritation.

Suspected of causing genetic defects (exposure route).

May cause cancer (exposure route).

#### Indication of immediate medical attention and special treatment needed, if necessary

Treat symptomatically

### 5. FIRE-FIGHTING MEASURES

#### Extinguishing media

Suitable media: Carbon dioxide, Dry chemical, Foam.

## SAFETY DATA SHEET

In accordance with 29 CFR 1910.1200

**Product:** NOP Cinnamon Leaf EO, Cinnamomum zeylanicum <NOP Certified Organic>

**Version:** 1

### Specific hazards arising from the chemical

In case of fire, may be liberated: Carbon monoxide, Unidentified organic compounds.

### Protective Equipment and Precautions for Firefighters

In case of insufficient ventilation, wear suitable respiratory equipment.

## 6. ACCIDENTAL RELEASE MEASURES

### Personal precautions, protective equipment and emergency procedures:

Avoid inhalation. Avoid contact with skin and eyes. See protective measures under Section 7 and 8.

### Methods and material for containment and cleaning up:

Remove ignition sources. Provide adequate ventilation. Avoid excessive inhalation of vapours. Contain spillage immediately by use of sand or inert powder. Dispose of according to local regulations.

## 7. HANDLING AND STORAGE

### Precautions for safe handling:

Keep away from heat, sparks, open flames and hot surfaces. - No smoking. Use personal protective equipment as required. Use in accordance with good manufacturing and industrial hygiene practices. Use in areas with adequate ventilation. Do not eat, drink or smoke when using this product.

### Conditions for safe storage, including any incompatibilities:

Store in a well-ventilated place. Keep container tightly closed. Keep cool. Ground/bond container and receiving equipment. Use explosion-proof electrical, ventilating and lighting equipment. Use only non-sparking tools. Take precautionary measures against static discharge.

## 8. EXPOSURE CONTROLS/PERSONAL PROTECTION

### Control parameters

#### **Exposure guidelines**

This product does not contain any hazardous materials with occupational exposure limits established by the region specific regulatory bodies.

#### **Other exposure guidelines**

No information available

### Exposure controls

#### **Engineering measures**

Showers, eyewash stations, ventilation systems.

### Individual protection measures, such as personal protective equipment

#### **Eye/Face and Skin Protection**

## SAFETY DATA SHEET

In accordance with 29 CFR 1910.1200

**Product:** NOP Cinnamon Leaf EO, Cinnamomum zeylanicum <NOP Certified Organic>

**Version:** 1

Wear protective gloves/eye protection/face protection, and suitable protective clothing

### Respiratory protection

If exposure limits are exceeded or irritation is experienced, NIOSH/MSHA approved respiratory protection should be worn. Positive-pressure supplied air respirators may be required for high airborne contaminant concentrations. Respiratory protection must be provided in accordance with current local regulations. A NIOSH-approved air-purifying respirator with an organic vapor cartridge or canister may be permissible under certain circumstances where airborne concentrations are expected to exceed exposure limits. Protection provided by air-purifying respirators is limited. Use a positive pressure, air-supplied respirator if there is any potential for uncontrolled release, exposure levels are not known or any other circumstances where air-purifying respirators may not provide adequate protection.

### Hygiene measures

Handle in accordance with good industrial hygiene and safety practice.

## 9. PHYSICAL AND CHEMICAL PROPERTIES

### Physical and chemical properties

<b>Appearance:</b>	Not determined
<b>Odor:</b>	Not determined
<b>Odor threshold:</b>	Not determined
<b>pH:</b>	Not determined
<b>Melting point / freezing point:</b>	Not determined
<b>Initial boiling point / range:</b>	Not determined
<b>Flash point:</b>	194 °F / 90 °C
<b>Evaporation rate:</b>	Not determined
<b>Flammability (solid, gas):</b>	Not determined
<b>Upper/lower flammability or explosive limits:</b>	Product does not present an explosion hazard
<b>Vapor pressure:</b>	Not determined
<b>Vapor density:</b>	Not determined
<b>Relative density:</b>	Not determined
<b>Solubility(ies):</b>	Not determined
<b>Partition coefficient: n-octanol/water:</b>	Not determined
<b>Auto-ignition temperature:</b>	Not determined
<b>Decomposition temperature:</b>	Not determined
<b>Viscosity:</b>	Not determined
<b><u>Other information:</u></b>	None available

## 10. STABILITY AND REACTIVITY

### Reactivity:

Presents no significant reactivity hazard, by itself or in contact with water.

## SAFETY DATA SHEET

In accordance with 29 CFR 1910.1200

**Product:** NOP Cinnamon Leaf EO, Cinnamomum zeylanicum <NOP Certified Organic>

**Version:** 1

**Chemical stability:**

Good stability under normal storage conditions.

**Possibility of hazardous reactions:**

Not expected under normal conditions of use.

**Conditions to avoid:**

Avoid extreme heat.

**Incompatible materials:**

Avoid contact with strong acids, alkalis or oxidising agents.

**Hazardous decomposition products:**

Not expected.

### **11. TOXICOLOGICAL INFORMATION**

**Information on toxicological effects**

<b>Acute Toxicity:</b>	Based on available data the classification criteria are not met.
Acute Toxicity Oral	2650 mg/kg
Acute Toxicity Dermal	>5000
Acute Toxicity Inhalation	Not Available
<b>Skin corrosion/irritation:</b>	Based on available data the classification criteria are not met.
<b>Serious eye damage/irritation:</b>	Eye Damage / Irritation Category 2A
<b>Respiratory or skin sensitisation:</b>	Sensitization - Skin Category 1
<b>Germ cell mutagenicity:</b>	Germ Cell Mutagenicity Category 2
<b>Carcinogenicity:</b>	Carcinogenicity Category 1B
<b>Reproductive toxicity:</b>	Based on available data the classification criteria are not met.
<b>STOT-single exposure:</b>	Based on available data the classification criteria are not met.
<b>STOT-repeated exposure:</b>	Based on available data the classification criteria are not met.
<b>Aspiration hazard:</b>	Based on available data the classification criteria are not met.

**Additional Information** None available

### **12. ECOLOGICAL INFORMATION**

**Ecotoxicity:**

Toxic to aquatic life with long lasting effects.

Harmful to aquatic life with long lasting effects.

**Persistence and degradability:** Not available

**Bioaccumulative potential:** Not available

## SAFETY DATA SHEET

In accordance with 29 CFR 1910.1200

**Product:** NOP Cinnamon Leaf EO, Cinnamomum zeylanicum <NOP Certified Organic>

**Version:** 1

**Mobility in soil:** Not available

**Other adverse effects:** Not available

### 13. DISPOSAL CONSIDERATIONS

#### Waste treatment

Dispose of in accordance with local regulations. Avoid disposing into drainage systems and into the environment. Empty containers should be taken to an approved waste handling site for recycling or disposal.

### 14. TRANSPORT INFORMATION

	14.1 UN number:	14.2 UN Proper Shipping Name:	14.3 Transport hazard class(es):	Sub Risk:	14.4. Packing Group:
<b>UN Model Regulations</b>	UN3082	ENVIRONMENTALLY HAZARDOUS SUBSTANCE, LIQUID, N.O.S. (d-Limonene, alpha-Pinene)	9	-	III
<b>US DOT</b>	None	-			-
<b>US DOT (Bulk)</b>	None	-			-
<b>IMDG</b>	UN3082	ENVIRONMENTALLY HAZARDOUS SUBSTANCE, LIQUID, N.O.S. (d-Limonene, alpha-Pinene) MARINE POLLUTANT	9	-	III
<b>ADR,RID,ADN</b>	UN3082	ENVIRONMENTALLY HAZARDOUS SUBSTANCE, LIQUID, N.O.S. (d-Limonene, alpha-Pinene)	9	-	III
<b>ICAO TI</b>	UN3082	ENVIRONMENTALLY HAZARDOUS SUBSTANCE, LIQUID, N.O.S. (d-Limonene, alpha-Pinene)	9	-	III

US DOT refers to domestic transport by road/rail within the 48 ground states

US DOT (Bulk) refers to domestic bulk transport by road/rail within the 48 ground states.

**Environmental hazards:** This is an environmentally hazardous substance.

**Special precautions for user:** None additional

**Transport in bulk according to Annex II of MARPOL73/78 and the IBC Code:**

Not applicable

### 15. REGULATORY INFORMATION

#### Safety, health and environmental regulations/legislation specific for the substance or mixture

RIFM ID Number: 444-E2.12

LM Unique Identifier: LM5140

## SAFETY DATA SHEET

In accordance with 29 CFR 1910.1200

**Product:** NOP Cinnamon Leaf EO, Cinnamomum zeylanicum <NOP Certified Organic>

**Version:** 1

### Additional information

None additional

### 16. OTHER INFORMATION

#### **Key to revisions:**

Not applicable

The information in this safety data sheet is to the best of our knowledge true and accurate but all data, instructions, recommendations and/or suggestions are made without guarantee.



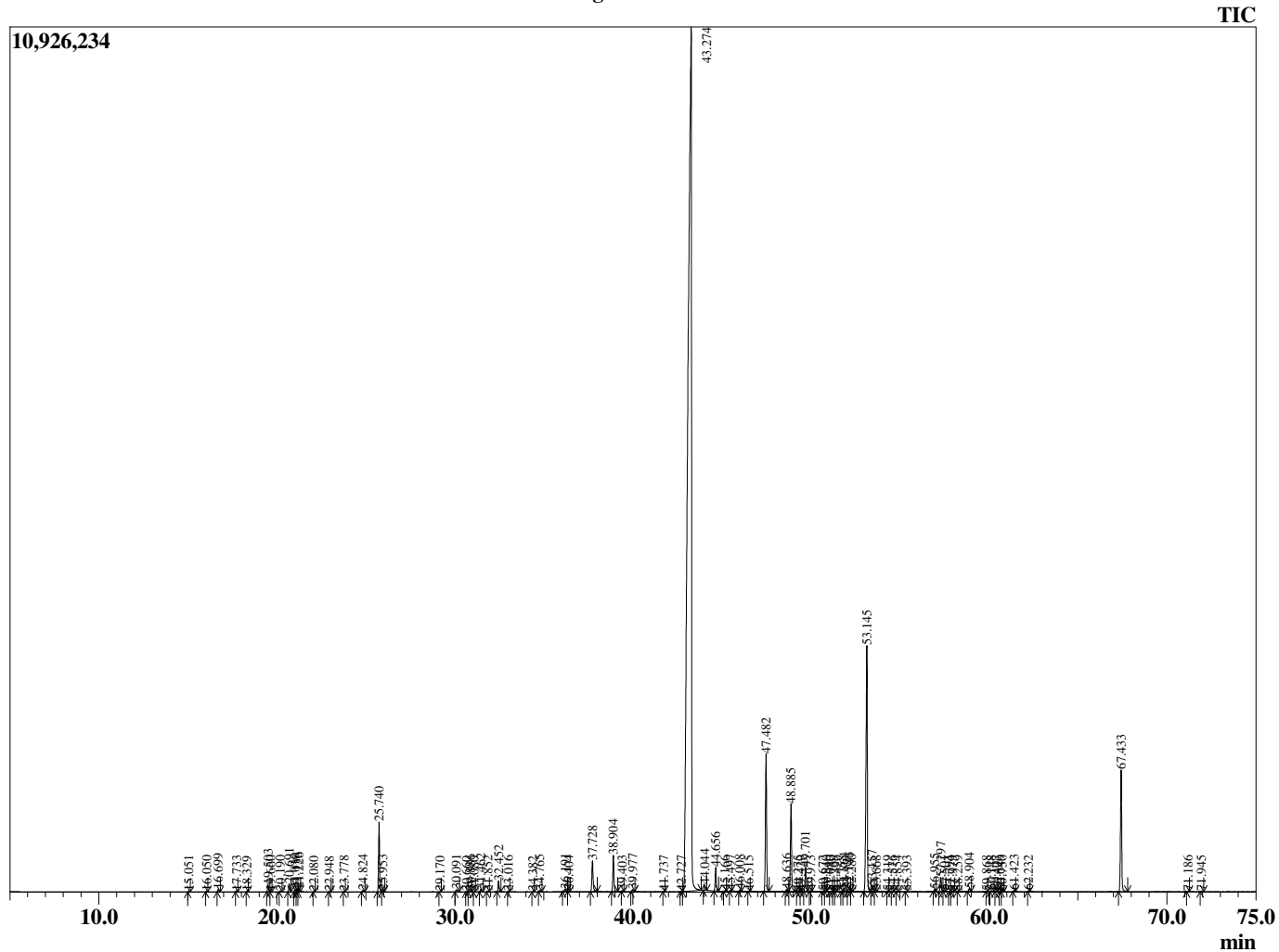
# Sample Information

Analyzed by : T. Wortham  
 Analyzed : 6/13/2020 1:44:43 AM  
 Sample Type : Essential Oil  
 Sample Name : COCinZeL7  
 Injection Volume : 0.10  
 Lot Number : J0D0415E  
 Instrument ID : GC-2

# Peak Report TIC

R.Time	Name	Area%
15.051	alpha-Pinene	0.02
16.050	Camphene	0.01
16.699	Benzaldehyde	0.05
17.733	beta-Pinene	0.02
18.329	Myrcene	0.01
19.503	alpha-Phellandrene	0.15
19.660	delta-3-Carene	0.01
20.190	alpha-Terpinene	0.02
20.691	para-Cymene	0.18
21.010	Limonene	0.06
21.136	beta-Phellandrene	0.07
21.226	1,8-Cineole	0.08
22.080	trans-beta-Ocimene	0.01
22.948	gamma-Terpinene	0.01
23.778	cis-Linalool oxide (furanoid)	0.01
24.824	Terpinolene	0.05
25.740	Linalool	1.67
25.953	Isopentyl 2-methylbutyrate	0.03
29.170	Camphor	0.01
30.091	Benzyl acetate	0.07
30.660	Unidentified	0.01
30.886	Borneol	0.04
31.080	(Z)-Cinnamaldehyde	0.01
31.462	Terpinen-4-ol	0.07
31.852	para-Cymen-8-ol	0.02
32.452	alpha-Terpineol	0.27
33.016	alpha-Phellandrene epoxide	0.02
34.382	Nerol	0.01
34.765	Hydrocinnamyl alcohol	0.05
36.191	Chavicol	0.09
36.404	2-Phenethyl acetate	0.02
37.728	(E)-Cinnamaldehyde	0.92
38.904	Safrrole	0.96
39.403	Carvacrol	0.02
39.977	(E)-Cinnamyl alcohol	0.06
41.737	delta-Elementene	0.01
42.727	alpha-Cubebene	0.01
43.274	Eugenol	74.32
44.044	Hydrocinnamyl acetate	0.14
44.656	alpha-Copaene	0.62
45.166	Benzyl isovalerate	0.01
45.497	beta-Elementene	0.02
46.008	Methyleugenol	0.03
46.515	cis-beta-Caryophyllene	0.01
47.482	beta-Caryophyllene	3.83
48.636	Aromadendrene	0.05
48.885	(E)-Cinnamyl acetate	2.45
49.275	Unidentified	0.02
49.429	Unidentified	0.01
49.701	alpha-Humulene	0.65
49.973	Alloaromadendrene	0.01
50.672	cis-Cadina-1(6),4-diene	0.02
50.840	trans-Cadina-1(6),4-diene	0.02
51.080	Unidentified	0.01
51.259	Germacrene D	0.01
51.396	Phenethyl 2-methylbutyrate	0.01
51.758	beta-Selinene	0.02
51.864	Viridiflorene (Ledene)	0.08
52.146	Bicyclogermacrene	0.09
52.280	alpha-Muurolene	0.02
53.145	Eugenyl acetate	7.91
53.457	delta-Cadinene	0.16

# Chromatogram COCinZeL7



R.Time	Name	Area%
53.668	trans-Calamenene	0.02
54.319	trans-Cadina-1,4-diene	0.01
54.576	alpha-Cadinene	0.01
54.854	Unidentified	0.01
55.393	Unidentified	0.01
56.955	Spathulenol	0.06
57.297	Caryophyllene oxide	0.40
57.501	Globulol	0.02
57.794	Methoxyeugenol	0.01
57.979	Unidentified	0.02
58.259	Unidentified	0.00
58.904	Humulene epoxide II	0.09
59.868	Unidentified	0.01
60.148	Unidentified	0.02
60.407	Unidentified	0.02
60.649	tau-Cadinol	0.01
60.750	epi-alpha-Cadinol	0.01
61.423	14-Hydroxy-9-epi-Z-Caryophyllene	0.04
62.232	14-Hydroxy-9-epi-E-Caryophyllene	0.02
67.433	Benzyl benzoate	3.53
71.186	Phytone	0.01
71.945	Phenethyl benzoate	0.02
		100.00