



Artisan Aromatics
1708 Lena Street, #103
Santa Fe, NM 87505
(505) 231-9439

SAFETY DATA SHEET

In accordance with 29 CFR 1910.1200

Product: Clary Sage Oil, France

Version: 1

1. IDENTIFICATION

Product Identifier

Product identifier: Clary Sage Oil, France; CAS: 8016-63-5

Other identifiers: Clary Sage Oil, France SalScl2 Salvia sclarea

Recommended use of the chemical and restrictions on use

Product uses: Essential Oil

Supplier Details

Company name: Artisan Aromatics

Company address: 1708 Lena Street, #103
Santa Fe, NM 87505

Contact: Stephanie Ariel

E-Mail address: hello@artisanaromatics.com

Company phone: 505-231-9439

Emergency telephone number

Emergency phone: ChemTel: 1-800-255-3924 (Domestic)

2. HAZARD IDENTIFICATION

Classification

This product is classified under 29CFR 1910.1200(d) as follows:

This material is considered hazardous by the OSHA Hazard Communication Standard (29 CFR 1910.1200)

Class and category of danger: Flammable Liquid, Hazard Category 4
Skin Corrosion / Irritation Category 2

Eye Damage / Irritation Category 2

Sensitization - Skin Category 1

Signal word: Warning

Hazard statements: Combustible liquid.
Causes skin irritation.
May cause an allergic skin reaction.
Causes serious eye irritation.

M factor: None

SAFETY DATA SHEET

In accordance with 29 CFR 1910.1200

Product: Clary Sage Oil, France

Version: 1

Pictograms:



Precautionary statements:

Keep away from heat, sparks, open flames and hot surfaces. - No smoking.
Avoid breathing vapour or dust.
Wash hands and other contacted skin thoroughly after handling.
Contaminated work clothing should not be allowed out of the workplace.
Wear protective gloves/eye protection/face protection.
IF ON SKIN: Wash with plenty of soap and water.
IF IN EYES: Rinse cautiously with water for several minutes. Remove contact lenses, if present and easy to do. Continue rinsing.
If skin irritation or rash occurs: Get medical advice/attention.
If eye irritation persists: Get medical advice/attention.
Take off contaminated clothing and wash before reuse.
In case of fire: Use carbon dioxide, dry chemical, foam for extinction.
Store in a well-ventilated place. Keep cool.
Dispose of contents/container to approved disposal site, in accordance with local regulations.

Hazards not otherwise classified (HNOC) None

3. COMPOSITION/INFORMATION ON INGREDIENTS

Substances

Product identifier: Clary Sage Oil, France; CAS: 8016-63-5

Contains:

Name	CAS	%	GHS Classification
Linalyl acetate	115-95-7	50-100%	Flam. Liq. 4-Skin Irrit. 2-Eye Irrit. 2B-Skin Sens. 1B;H227-H315-H317-H320
Linalool	78-70-6	10-<20%	Flam. Liq. 4-Skin Irrit. 2-Eye Irrit. 2A-Skin Sens. 1B;H227-H315-H317-H319
Geranyl acetate	105-87-3	1-<5%	Skin Irrit. 2-Skin Sens. 1;H315-H317
alpha-Terpineol	98-55-5	1-<5%	Flam. Liq. 4-Skin Irrit. 2-Eye Irrit. 2A;H227-H315-H319
beta-Caryophyllene	87-44-5	1-<5%	Skin Sens. 1B-Asp. Tox 1;H304-H317
Neryl acetate	141-12-8	1-<5%	Skin Irrit. 2-Skin Sens. 1B;H315-H317
Myrcene	123-35-3	1-<5%	Flam. Liq. 3-Skin Irrit. 2-Eye Irrit. 2A-Asp. Tox 1;H226-H304-H315-H319

The exact percentage concentrations of components are being withheld as a trade secret.

SAFETY DATA SHEET

In accordance with 29 CFR 1910.1200

Product: Clary Sage Oil, France

Version: 1

4. FIRST-AID MEASURES

Description of first aid measures

Inhalation: Remove from exposure site to fresh air, keep at rest, and obtain medical attention.

Eye exposure: IF IN EYES: Rinse cautiously with water for several minutes. Remove contact lenses, if present and easy to do. Continue rinsing.

Skin exposure: IF ON SKIN: Wash with plenty of soap and water.

Ingestion: Rinse mouth with water and obtain medical attention.

Most important symptoms and effects, both acute and delayed

Causes skin irritation.

May cause an allergic skin reaction.

Causes serious eye irritation.

Indication of immediate medical attention and special treatment needed, if necessary

Treat symptomatically

5. FIRE-FIGHTING MEASURES

Extinguishing media

Suitable media: Carbon dioxide, Dry chemical, Foam.

Specific hazards arising from the chemical

In case of fire, may be liberated: Carbon monoxide, Unidentified organic compounds.

Protective Equipment and Precautions for Firefighters

In case of insufficient ventilation, wear suitable respiratory equipment.

6. ACCIDENTAL RELEASE MEASURES

Personal precautions, protective equipment and emergency procedures:

Avoid inhalation. Avoid contact with skin and eyes. See protective measures under Section 7 and 8.

Methods and material for containment and cleaning up:

Remove ignition sources. Provide adequate ventilation. Avoid excessive inhalation of vapours. Contain spillage immediately by use of sand or inert powder. Dispose of according to local regulations.

7. HANDLING AND STORAGE

Precautions for safe handling:

Keep away from heat, sparks, open flames and hot surfaces. - No smoking. Use personal protective equipment as required. Use in accordance with good manufacturing and industrial hygiene practices. Use in areas with adequate ventilation. Do not eat, drink or smoke when using this product.

SAFETY DATA SHEET

In accordance with 29 CFR 1910.1200

Product: Clary Sage Oil, France

Version: 1

Conditions for safe storage, including any incompatibilities:

Store in a well-ventilated place. Keep container tightly closed. Keep cool. Ground/bond container and receiving equipment. Use explosion-proof electrical, ventilating and lighting equipment. Use only non-sparking tools. Take precautionary measures against static discharge.

8. EXPOSURE CONTROLS/PERSONAL PROTECTION

Control parameters

Exposure guidelines

This product does not contain any hazardous materials with occupational exposure limits established by the region specific regulatory bodies.

Other exposure guidelines

No information available

Exposure controls

Engineering measures

Showers, eyewash stations, ventilation systems.

Individual protection measures, such as personal protective equipment

Eye/Face and Skin Protection

Wear protective gloves/eye protection/face protection, and suitable protective clothing

Respiratory protection

If exposure limits are exceeded or irritation is experienced, NIOSH/MSHA approved respiratory protection should be worn. Positive-pressure supplied air respirators may be required for high airborne contaminant concentrations. Respiratory protection must be provided in accordance with current local regulations. A NIOSH-approved air-purifying respirator with an organic vapor cartridge or canister may be permissible under certain circumstances where airborne concentrations are expected to exceed exposure limits. Protection provided by air-purifying respirators is limited. Use a positive pressure, air-supplied respirator if there is any potential for uncontrolled release, exposure levels are not known or any other circumstances where air-purifying respirators may not provide adequate protection.

Hygiene measures

Handle in accordance with good industrial hygiene and safety practice.

9. PHYSICAL AND CHEMICAL PROPERTIES

Physical and chemical properties

Appearance:	Not determined
Odor:	Not determined
Odor threshold:	Not determined
pH:	Not determined
Melting point / freezing point:	Not determined
Initial boiling point / range:	Not determined

SAFETY DATA SHEET

In accordance with 29 CFR 1910.1200

Product: Clary Sage Oil, France

Version: 1

Flash point:	185 °F / 85 °C
Evaporation rate:	Not determined
Flammability (solid, gas):	Not determined
Upper/lower flammability or explosive limits:	Product does not present an explosion hazard
Vapor pressure:	Not determined
Vapor density:	Not determined
Relative density:	Not determined
Solubility(ies):	Not determined
Partition coefficient: n-octanol/water:	Not determined
Auto-ignition temperature:	Not determined
Decomposition temperature:	Not determined
Viscosity:	Not determined

Other information: None available

10. STABILITY AND REACTIVITY

Reactivity:

Presents no significant reactivity hazard, by itself or in contact with water.

Chemical stability:

Good stability under normal storage conditions.

Possibility of hazardous reactions:

Not expected under normal conditions of use.

Conditions to avoid:

Avoid extreme heat.

Incompatible materials:

Avoid contact with strong acids, alkalis or oxidising agents.

Hazardous decomposition products:

Not expected.

11. TOXICOLOGICAL INFORMATION

Information on toxicological effects

Acute Toxicity:	Based on available data the classification criteria are not met.
Acute Toxicity Oral	>5000
Acute Toxicity Dermal	Not Applicable
Acute Toxicity Inhalation	Not Available
Skin corrosion/irritation:	

SAFETY DATA SHEET

In accordance with 29 CFR 1910.1200

Product: Clary Sage Oil, France

Version: 1

Serious eye damage/irritation: Skin Corrosion / Irritation Category 2
Respiratory or skin sensitisation: Eye Damage / Irritation Category 2
Germ cell mutagenicity: Sensitization - Skin Category 1
Carcinogenicity: Based on available data the classification criteria are not met.
Reproductive toxicity: Based on available data the classification criteria are not met.
STOT-single exposure: Based on available data the classification criteria are not met.
STOT-repeated exposure: Based on available data the classification criteria are not met.
Aspiration hazard: Based on available data the classification criteria are not met.

Additional Information None available

12. ECOLOGICAL INFORMATION

Ecotoxicity: Not available
Persistence and degradability: Not available
Bioaccumulative potential: Not available
Mobility in soil: Not available
Other adverse effects: Not available

13. DISPOSAL CONSIDERATIONS

Waste treatment

Dispose of in accordance with local regulations. Avoid disposing into drainage systems and into the environment. Empty containers should be taken to an approved waste handling site for recycling or disposal.

14. TRANSPORT INFORMATION

	14.1 UN number:	14.2 UN Proper Shipping Name:	14.3 Transport hazard class(es):	Sub Risk:	14.4. Packing Group:
UN Model Regulations	None	-			-
US DOT	None	-			-
US DOT (Bulk)	None	-			-
IMDG	None	-			-
ADR,RID,ADN	None	-			-
ICAO TI	None	-			-

US DOT refers to domestic transport by road/rail within the 48 ground states

SAFETY DATA SHEET

In accordance with 29 CFR 1910.1200

Product: Clary Sage Oil, France

Version: 1

US DOT (Bulk) refers to domestic bulk transport by road/rail within the 48 ground states.

Environmental hazards: Not environmentally hazardous for transport

Special precautions for user: None additional

Transport in bulk according to Annex II of MARPOL73/78 and the IBC Code:

Not classified

15. REGULATORY INFORMATION

Safety, health and environmental regulations/legislation specific for the substance or mixture

None additional

Additional information

None additional

16. OTHER INFORMATION

Key to revisions:

Not applicable

The information in this safety data sheet is to the best of our knowledge true and accurate but all data, instructions, recommendations and/or suggestions are made without guarantee.

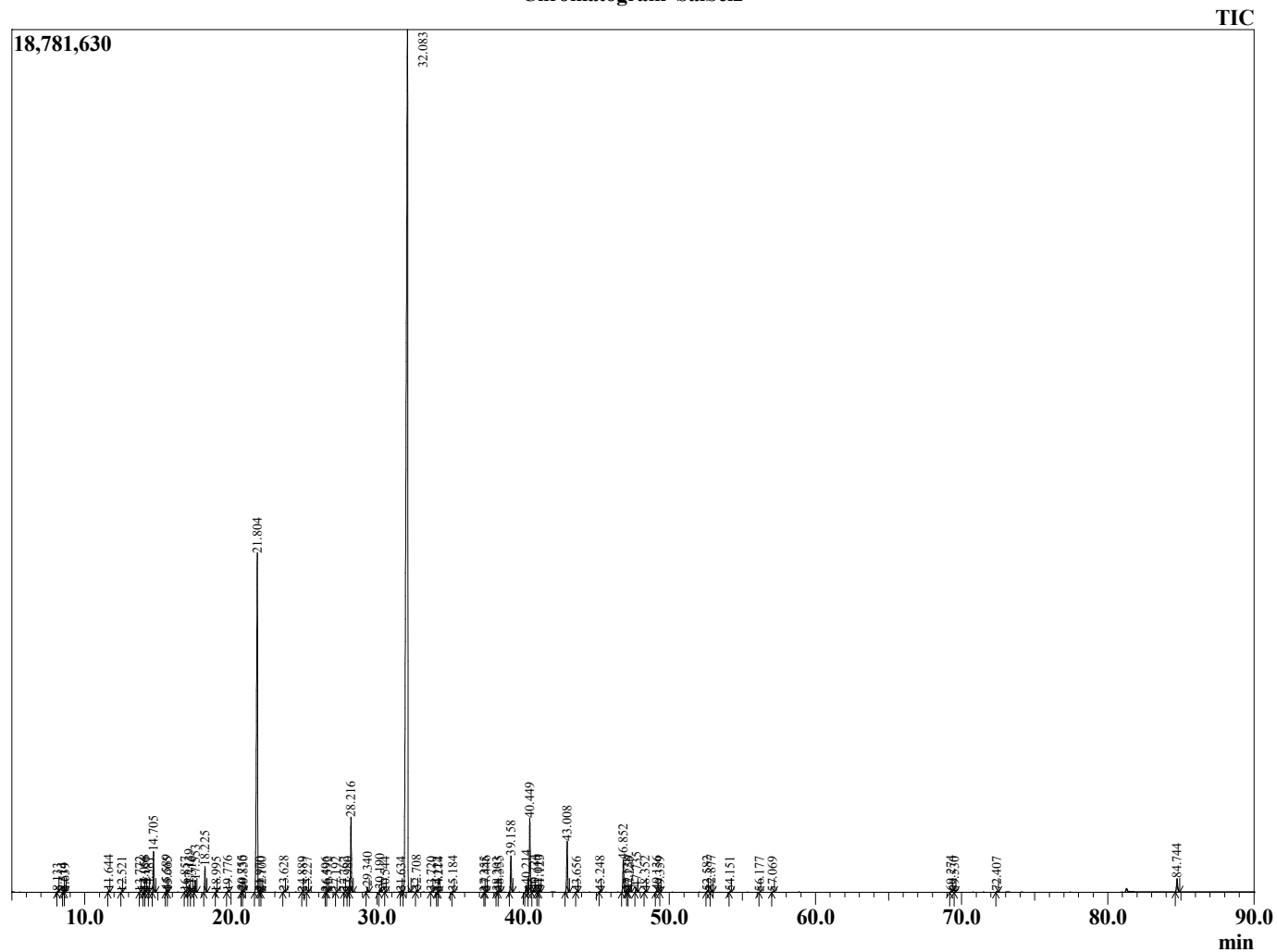
Sample Information

Analyzed by : K.Smith
 Analyzed : 11/10/2022 5:12:39 PM
 Sample Type : Essential Oil
 Sample Name : SalSci2
 Injection Volume : 0.10 µL
 Lot Number : J0F1109J
 Instrument ID : GC-2

Peak Report TIC

R.Time	Name	Area%
3.758	3-Methylbutanal	0.00
8.133	Hex-(3Z)-enol	0.02
8.514	Hex-(2E)-enol	0.01
8.639	Hexanol	0.01
11.644	alpha-Pinene	0.05
12.521	Camphene	0.01
13.772	Sabinene	0.01
14.058	beta-Pinene	0.05
14.156	1-Octen-3-ol	0.01
14.381	Unidentified	0.00
14.705	Myrcene	1.30
15.589	Pseudolimonene	0.07
15.665	cis-Dehydrolinalool oxide	0.02
16.857	para-Cymene	0.02
17.139	Limonene	0.24
17.316	1,8-cineole	0.01
17.553	cis-beta-Ocimene	0.40
18.225	trans-beta-Ocimene	0.86
18.995	gamma-Terpinene	0.01
19.776	cis-Linalool oxide (furanoid)	0.03
20.755	Terpinolene	0.05
20.830	trans-Linalool oxide (furanoid)	0.03
21.804	Linalool	16.38
21.970	Hotrienol	0.02
22.100	Nonanal	0.01
23.628	allo-Ocimene	0.04
24.889	Camphor	0.01
25.227	Nerol oxide	0.01
26.496	delta-Terpineol	0.01
26.592	Borneol	0.01
27.192	Terpinen-4-ol	0.01
27.762	Unidentified	0.01
27.980	Methyl salicylate	0.00
28.216	alpha-Terpineol	2.91
29.340	Linalyl formate	0.20
30.190	Nerol	0.12
30.544	Unidentified	0.00
31.634	Unidentified	0.01
32.083	Linalyl acetate	67.03
32.708	Unidentified	0.07
33.720	Unidentified	0.02
34.122	Isopulegyl acetate	0.01
34.214	Bornyl acetate	0.01
35.184	Geranyl formate	0.03
37.355	Unidentified	0.01
37.446	Unidentified	0.05
38.203	Unidentified	0.02
38.355	Epoxy-alpha-terpenyl acetate	0.05
39.158	Neryl acetate	1.44
40.214	alpha-Copaene	0.28
40.449	Geranyl acetate	2.96
40.724	beta-Bourbonene	0.08
41.010	beta-Cubebene	0.06
41.123	beta-Elmene	0.07
43.008	beta-Caryophyllene	2.14
43.656	beta-Copaene	0.02
45.248	alpha-Humulene	0.03
46.852	Germacrene D	1.36
47.128	Unidentified	0.01
47.259	Valencene	0.07
47.735	Bicyclogermacrene	0.20
48.352	(E,E)-alpha-Farnesene	0.03

Chromatogram SalSci2



R.Time	Name	Area%
49.136	delta-Cadinene	0.06
49.359	Unidentified	0.00
52.582	Spathulenol	0.04
52.877	Caryophyllene oxide	0.07
54.151	Unidentified	0.02
56.177	Unidentified	0.01
57.069	alpha-Eudesmol	0.02
69.274	Sclareoloxide	0.04
69.530	Unidentified	0.01
72.407	meta-Camphorene	0.02
84.744	Sclareol	0.70
		100.00