



Artisan Aromatics
1708 Lena Street, #103
Santa Fe, NM 87505
(505) 231-9439

SAFETY DATA SHEET

In accordance with 29 CFR 1910.1200

Product: Cypress Oil, Crete

Version: 2

1. IDENTIFICATION

Product Identifier

Product identifier: Cypress Oil, Crete; CAS: 8013-86-3

Other identifiers: Cypress Oil, Crete CupSem2 Cupressus sempervirens

Recommended use of the chemical and restrictions on use

Product uses: Essential Oil

Supplier Details

Company name: Artisan Aromatics

Company address: 1708 Lena Street, #103
Santa Fe, NM 87505

Contact: Stephanie Ariel

E-Mail address: hello@artisanaromatics.com

Company phone: 502-498-8804

Emergency telephone number

Emergency phone: ChemTel: 1-800-255-3924 (Domestic)

2. HAZARD IDENTIFICATION

Classification

This product is classified under 29CFR 1910.1200(d) as follows:

This material is considered hazardous by the OSHA Hazard Communication Standard (29 CFR 1910.1200)

Class and category of danger: Flammable Liquid, Hazard Category 3
Skin Corrosion / Irritation Category 2
Sensitization - Skin Category 1
Aspiration Hazard Category 1

Signal word: Danger

Hazard statements: Flammable liquid and vapour.
May be fatal if swallowed and enters airways.
Causes skin irritation.
May cause an allergic skin reaction.

M factor: None



SAFETY DATA SHEET

In accordance with 29 CFR 1910.1200

Product: Cypress Oil, Crete

Version: 2

Pictograms:



Precautionary statements:

Keep away from heat, sparks, open flames and hot surfaces. - No smoking.
Keep container tightly closed.
Ground/bond container and receiving equipment.
Use explosion-proof electrical, ventilating and lighting equipment.
Use only non-sparking tools.
Take precautionary measures against static discharge.
Avoid breathing vapour or dust.
Wash hands and other contacted skin thoroughly after handling.
Contaminated work clothing should not be allowed out of the workplace.
Wear protective gloves/eye protection/face protection.
IF SWALLOWED: Immediately call a POISON CENTER or doctor/physician.
IF ON SKIN (or hair): Remove/take off immediately all contaminated clothing. Rinse skin with water/shower.
Do not induce vomiting.
If skin irritation or rash occurs: Get medical advice/attention.
Take off contaminated clothing and wash before reuse.
In case of fire: Use carbon dioxide, dry chemical, foam for extinction.
Store in a well-ventilated place. Keep cool.
Store locked up.
Dispose of contents/container to approved disposal site, in accordance with local regulations.

Hazards not otherwise classified (HNOC) None

3. COMPOSITION/INFORMATION ON INGREDIENTS

Substances

Product identifier: Cypress Oil, Crete; CAS: 8013-86-3



SAFETY DATA SHEET

In accordance with 29 CFR 1910.1200

Product: Cypress Oil, Crete

Version: 2

Contains:

Name	CAS	%	GHS Classification
alpha-Pinene	80-56-8	50-100%	Flam. Liq. 3-Acute Tox. 4-Skin Irrit. 2-Skin Sens. 1B-Asp. Tox 1;H226-H302-H304-H315-H317
delta-3-Carene	13466-78-9	20-<50%	Flam. Liq. 3-Skin Irrit. 2-Skin Sens. 1-Asp. Tox 1;H226-H304-H315-H317
d-Limonene	5989-27-5	1-<5%	Flam. Liq. 3-Skin Irrit. 2-Skin Sens. 1B-Asp. Tox 1;H226-H304-H315-H317
beta-Pinene	127-91-3	1-<5%	Flam. Liq. 3-Skin Irrit. 2-Skin Sens. 1B-Asp. Tox 1;H226-H304-H315-H317
4-Carvomenthenol	562-74-3	1-<5%	Flam. Liq. 4-Acute Tox. 4-Skin Irrit. 2-Eye Irrit. 2A;H227-H302-H315-H319
Myrcene	123-35-3	1-<5%	Flam. Liq. 3-Skin Irrit. 2-Eye Irrit. 2A-Asp. Tox 1;H226-H304-H315-H319
Terpinolene	586-62-9	1-<5%	Flam. Liq. 4-Skin Sens. 1B-Asp. Tox 1;H227-H304-H317
Linalool	78-70-6	0.1-<1%	Flam. Liq. 4-Skin Irrit. 2-Eye Irrit. 2A-Skin Sens. 1B;H227-H315-H317-H319
beta-Caryophyllene	87-44-5	0.1-<1%	Skin Sens. 1B-Asp. Tox 1;H304-H317

The exact percentage concentrations of components are being withheld as a trade secret.

4. FIRST-AID MEASURES

Description of first aid measures

Inhalation: Remove from exposure site to fresh air, keep at rest, and obtain medical attention.

Eye exposure: Flush immediately with water for at least 15 minutes. Contact physician if symptoms persist.

Skin exposure: IF ON SKIN (or hair): Remove/take off immediately all contaminated clothing. Rinse skin with water/shower.

Ingestion: IF SWALLOWED: Immediately call a POISON CENTER or doctor/physician.

Most important symptoms and effects, both acute and delayed

May be fatal if swallowed and enters airways.

Causes skin irritation.

May cause an allergic skin reaction.

Indication of immediate medical attention and special treatment needed, if necessary

Treat symptomatically

5. FIRE-FIGHTING MEASURES

Extinguishing media

Suitable media: Carbon dioxide, Dry chemical, Foam.

Specific hazards arising from the chemical

In case of fire, may be liberated: Carbon monoxide, Unidentified organic compounds.



SAFETY DATA SHEET

In accordance with 29 CFR 1910.1200

Product: Cypress Oil, Crete

Version: 2

Protective Equipment and Precautions for Firefighters

In case of insufficient ventilation, wear suitable respiratory equipment.

6. ACCIDENTAL RELEASE MEASURES

Personal precautions, protective equipment and emergency procedures:

Avoid inhalation. Avoid contact with skin and eyes. See protective measures under Section 7 and 8.

Methods and material for containment and cleaning up:

Remove ignition sources. Provide adequate ventilation. Avoid excessive inhalation of vapours. Contain spillage immediately by use of sand or inert powder. Dispose of according to local regulations.

7. HANDLING AND STORAGE

Precautions for safe handling:

Keep away from heat, sparks, open flames and hot surfaces. - No smoking.

Conditions for safe storage, including any incompatibilities:

Ground/bond container and receiving equipment.
Use only non-sparking tools.
Take precautionary measures against static discharge.

8. EXPOSURE CONTROLS/PERSONAL PROTECTION

Control parameters

Exposure guidelines

This product does not contain any hazardous materials with occupational exposure limits established by the region specific regulatory bodies.

Other exposure guidelines

No information available

Exposure controls

Engineering measures

Showers, eyewash stations, ventilation systems.

Individual protection measures, such as personal protective equipment

Eye/Face and Skin Protection

Wear protective gloves/eye protection/face protection, and suitable protective clothing

Respiratory protection

If exposure limits are exceeded or irritation is experienced, NIOSH/MSHA approved respiratory protection should be worn. Positive-pressure supplied air respirators may be required for high airborne contaminant concentrations.



SAFETY DATA SHEET

In accordance with 29 CFR 1910.1200

Product: Cypress Oil, Crete

Version: 2

Respiratory protection must be provided in accordance with current local regulations. A NIOSH-approved air-purifying respirator with an organic vapor cartridge or canister may be permissible under certain circumstances where airborne concentrations are expected to exceed exposure limits. Protection provided by air-purifying respirators is limited. Use a positive pressure, air-supplied respirator if there is any potential for uncontrolled release, exposure levels are not known or any other circumstances where air-purifying respirators may not provide adequate protection.

Hygiene measures

Handle in accordance with good industrial hygiene and safety practice.

9. PHYSICAL AND CHEMICAL PROPERTIES

Physical and chemical properties

Appearance:	Not determined
Odor:	Not determined
Odor threshold:	Not determined
pH:	Not determined
Melting point / freezing point:	Not determined
Initial boiling point / range:	Not determined
Flash point:	97 °F / 36 °C
Evaporation rate:	Not determined
Flammability (solid, gas):	Not determined
Upper/lower flammability or explosive limits:	Product does not present an explosion hazard
Vapor pressure:	Not determined
Vapor density:	Not determined
Relative density:	Not determined
Solubility(ies):	Not determined
Partition coefficient: n-octanol/water:	Not determined
Auto-ignition temperature:	Not determined
Decomposition temperature:	Not determined
Viscosity:	Not determined
<u>Other information:</u>	None available

10. STABILITY AND REACTIVITY

Reactivity:

Presents no significant reactivity hazard, by itself or in contact with water.

Chemical stability:

Good stability under normal storage conditions.



SAFETY DATA SHEET

In accordance with 29 CFR 1910.1200

Product: Cypress Oil, Crete

Version: 2

Possibility of hazardous reactions:

Not expected under normal conditions of use.

Conditions to avoid:

Avoid extreme heat.

Incompatible materials:

Avoid contact with strong acids, alkalis or oxidising agents.

Hazardous decomposition products:

Not expected.

11. TOXICOLOGICAL INFORMATION

Information on toxicological effects

Acute Toxicity:	Based on available data the classification criteria are not met.
Acute Toxicity Oral	839
Acute Toxicity Dermal	>5000
Acute Toxicity Inhalation	Not Available
Skin corrosion/irritation:	Skin Corrosion / Irritation Category 2
Serious eye damage/irritation:	Based on available data the classification criteria are not met.
Respiratory or skin sensitisation:	Sensitization - Skin Category 1
Germ cell mutagenicity:	Based on available data the classification criteria are not met.
Carcinogenicity:	Based on available data the classification criteria are not met.
Reproductive toxicity:	Based on available data the classification criteria are not met.
STOT-single exposure:	Based on available data the classification criteria are not met.
STOT-repeated exposure:	Based on available data the classification criteria are not met.
Aspiration hazard:	

Additional Information None available

12. ECOLOGICAL INFORMATION

Ecotoxicity:

Very toxic to aquatic life with long lasting effects.

Toxic to aquatic life with long lasting effects.

Persistence and degradability: Not available

Bioaccumulative potential: Not available

Mobility in soil: Not available

Other adverse effects: Not available



SAFETY DATA SHEET
In accordance with 29 CFR 1910.1200

Product: Cypress Oil, Crete

Version: 2

13. DISPOSAL CONSIDERATIONS

Waste treatment

Dispose of in accordance with local regulations. Avoid disposing into drainage systems and into the environment. Empty containers should be taken to an approved waste handling site for recycling or disposal.

14. TRANSPORT INFORMATION

	14.1 UN number:	14.2 UN Proper Shipping Name:	14.3 Transport hazard class(es):	Sub Risk:	14.4. Packing Group:
UN Model Regulations	UN1169	EXTRACTS, AROMATIC, LIQUID	3	-	III
US DOT	UN1169	EXTRACTS, AROMATIC, LIQUID	3	-	III
US DOT (Bulk)	UN1169	EXTRACTS, AROMATIC, LIQUID	3	-	III
IMDG	UN1169	EXTRACTS, AROMATIC, LIQUID (alpha-Pinene) MARINE POLLUTANT	3	-	III
ADR,RID,ADN	UN1169	EXTRACTS, AROMATIC, LIQUID	3	-	III
ICAO TI	UN1169	EXTRACTS, AROMATIC, LIQUID	3	-	III

US DOT refers to domestic transport by road/rail within the 48 ground states

US DOT (Bulk) refers to domestic bulk transport by road/rail within the 48 ground states.

Environmental hazards: This is an environmentally hazardous substance.

Special precautions for user: None additional

Transport in bulk according to Annex II of MARPOL73/78 and the IBC Code:

Not applicable

15. REGULATORY INFORMATION

Safety, health and environmental regulations/legislation specific for the substance or mixture

RIFM ID Number: 659-E2.12

LM Unique Identifier: LM9154

Additional information

None additional

16. OTHER INFORMATION

Key to revisions:

Product identifier

The information in this safety data sheet is to the best of our knowledge true and accurate but all data, instructions,



Artisan
AROMATICS

SAFETY DATA SHEET

In accordance with 29 CFR 1910.1200

Product: Cypress Oil, Crete

Version: 2

recommendations and/or suggestions are made without guarantee.

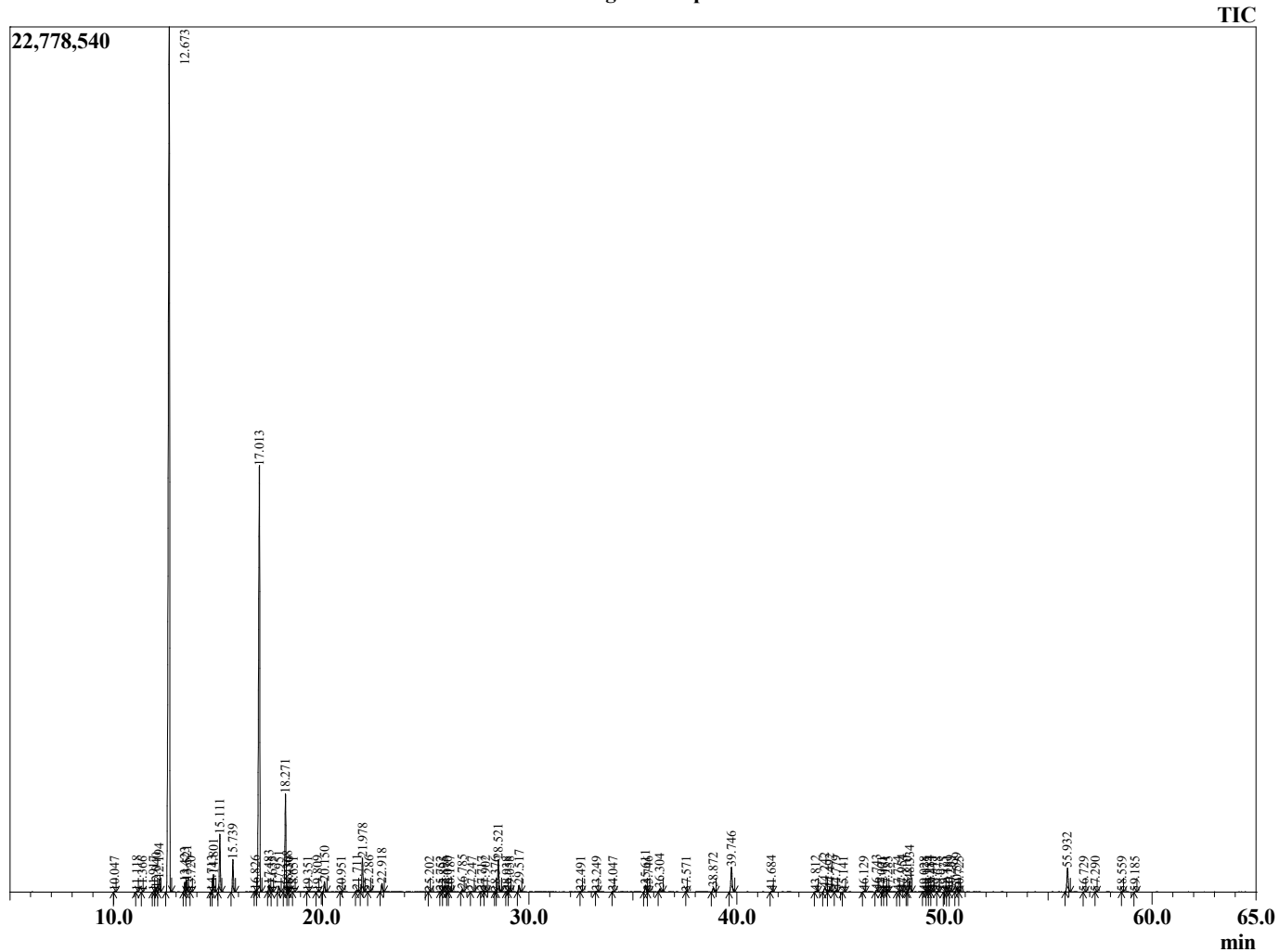
Sample Information

Analyzed by : J. Scalf
 Analyzed : 12/08/2022 5:11:00 PM
 Sample Type : Essential Oil
 Sample Name : CupSem2
 Injection Volume : 0.10 µL
 Lot Number : J0F1208B
 Instrument ID : GC-3

Peak Report TIC

R.Time	Name	Area%
10.047	Santene	0.03
11.118	Unidentified	0.03
11.366	Unidentified	0.01
11.917	Hashishene	0.02
12.040	Tricyclene	0.14
12.194	alpha-Thujene	0.55
12.673	alpha-Pinene	52.75
13.423	alpha-Fenchene	0.41
13.521	Camphene	0.47
13.720	Thuja-2,4(10)-diene	0.02
14.713	meta-Cymene	0.05
14.801	Sabinene	0.77
15.111	beta-Pinene	2.61
15.739	Myrcene	1.44
16.826	alpha-Phellandrene	0.07
17.013	delta-3-Carene	23.38
17.483	alpha-Terpinene	0.33
17.635	para-Cymene	0.02
17.951	ortho-Cymene	0.27
18.271	Limonene	4.64
18.368	beta-Phellandrene	0.24
18.430	1,8-Cineole	0.01
18.651	cis-beta-Ocimene	0.01
19.351	trans-beta-Ocimene	0.02
19.809	gamma-Terpinene analogue	0.04
20.150	gamma-Terpinene	0.51
20.951	trans-Sabinene hydrate	0.01
21.711	Isoterpinolene	0.10
21.978	Terpinolene	1.70
22.286	para-Cymenene	0.04
22.918	Linalool	0.43
25.202	Unidentified	0.01
25.752	trans-Pinocarveol	0.01
25.895	Epoxyterpinolene	0.02
26.070	trans-Verbenol	0.01
26.187	Camphor	0.05
26.785	Karahanaenone	0.13
27.247	para-Mentha-1,5-dien-8-ol	0.02
27.717	Umbellulone	0.02
27.902	Borneol	0.04
28.376	Unidentified	0.00
28.521	Terpinen-4-ol	1.78
28.938	para-Cymen-8-ol	0.02
29.058	Unidentified	0.02
29.517	alpha-Terpineol	0.36
32.491	Thymol methyl ether	0.01
33.249	Linalyl acetate	0.02
34.047	Plinyl acetate	0.02
35.611	Bornyl acetate	0.40
35.746	Unidentified	0.02
36.304	Unidentified	0.19
37.571	Deca-(2Z,4Z)-dienol	0.01
38.872	gamma-Terpinyl acetate	0.24
39.746	alpha-Terpinyl acetate	1.54
41.684	alpha-Copaene	0.04
43.812	Calone	0.05
44.242	alpha-Cedrene	0.33
44.492	trans-beta-Caryophyllene	0.18
44.779	beta-Cedrene	0.08
45.141	beta-Copaene	0.02
46.129	Cadina-3,5-diene	0.03
46.743	alpha-Humulene	0.13

Chromatogram CupSem2



R.Time	Name	Area%
47.001	cis-Cadina-1(6),4-diene	0.01
47.151	cis-Muurolo-4(14),5-diene	0.06
47.285	alpha-Acoradiene	0.01
47.774	trans-Cadina-1(6),4-diene	0.04
47.954	gamma-Muuroloene	0.13
48.210	alpha-Amorphene	0.01
48.334	Germacrene D	0.69
49.028	trans-Murrolo-4(14),5-diene	0.04
49.175	Unidentified	0.02
49.284	Epizonarene	0.05
49.411	alpha-Muuroloene	0.07
49.678	delta-Amorphene	0.02
49.975	Unidentified	0.01
50.181	alpha-Alaskene	0.06
50.289	gamma-Cadinene	0.07
50.599	delta-Cadinene	0.23
50.725	trans-Calamenene	0.01
55.932	Cedrol	1.49
56.729	Epicedrol	0.01
57.290	alpha-Acorenol	0.01
58.559	alpha-Cadinol	0.01
59.185	Unidentified	0.02
		100.00