

SAFETY DATA SHEET

In accordance with 29 CFR 1910.1200

Product: Pink Grapefruit Oil
Version: 2

1. IDENTIFICATION

Product Identifier

Product identifier: Grapefruit Oil, Pink USA; CAS: 8016-20-4
Other identifiers: Pink Grapefruit Oil CitPar2 Citrus paradisi

Recommended use of the chemical and restrictions on use

Product uses: Essential Oil

Supplier Details

Company name: Artisan Aromatics
Company address: 1708 Lena Street, #103
Santa Fe, NM 87505
Contact: Stephanie Ariel
hello@artisanaromatics.com
E-Mail address:
Company phone: 505-231-9439

Emergency telephone number

Emergency phone: ChemTel: 1-800-255-3924 (Domestic)

2. HAZARD IDENTIFICATION

Classification

This product is classified under 29CFR 1910.1200(d) as follows:

This material is considered hazardous by the OSHA Hazard Communication Standard (29 CFR 1910.1200)

Class and category of danger: Flammable Liquid, Hazard Category 3
Skin Corrosion / Irritation Category 2
Sensitization - Skin Category 1
Aspiration Hazard Category 1

Signal word: Danger

Hazard statements: Flammable liquid and vapour.
May be fatal if swallowed and enters airways.
Causes skin irritation.
May cause an allergic skin reaction.

M factor: None

SAFETY DATA SHEET

In accordance with 29 CFR 1910.1200

Product: Pink Grapefruit Oil

Version: 2

Pictograms:



Precautionary statements:

Keep away from heat, sparks, open flames and hot surfaces. - No smoking.
Keep container tightly closed.
Ground/bond container and receiving equipment.
Use explosion-proof electrical, ventilating and lighting equipment.
Use only non-sparking tools.
Take precautionary measures against static discharge.
Avoid breathing vapour or dust.
Wash hands and other contacted skin thoroughly after handling.
Contaminated work clothing should not be allowed out of the workplace.
Wear protective gloves/eye protection/face protection.
IF SWALLOWED: Immediately call a POISON CENTER or doctor/physician.
IF ON SKIN (or hair): Remove/take off immediately all contaminated clothing. Rinse skin with water/shower.
Do not induce vomiting.
If skin irritation or rash occurs: Get medical advice/attention.
Take off contaminated clothing and wash before reuse.
In case of fire: Use carbon dioxide, dry chemical, foam for extinction.
Store in a well-ventilated place. Keep cool.
Store locked up.
Dispose of contents/container to approved disposal site, in accordance with local regulations.

Hazards not otherwise classified (HNOC) None

3. COMPOSITION/INFORMATION ON INGREDIENTS

Substances

Product identifier: Grapefruit Oil, Pink USA; CAS: 8016-20-4

SAFETY DATA SHEET

In accordance with 29 CFR 1910.1200

Product: Pink Grapefruit Oil

Version: 2

Contains:

| Name | CAS | % | GHS Classification |
|--------------------|----------|---------|---|
| Limonene | 138-86-3 | 50-100% | Flam. Liq. 3-Skin Irrit. 2-Skin Sens. 1B-Asp. Tox 1;H226-H304-H315-H317 |
| Myrcene | 123-35-3 | 1-<5% | Flam. Liq. 3-Skin Irrit. 2-Eye Irrit. 2A-Asp. Tox 1;H226-H304-H315-H319 |
| alpha-Pinene | 80-56-8 | 0.1-<1% | Flam. Liq. 3-Acute Tox. 4-Skin Irrit. 2-Skin Sens. 1B-Asp. Tox 1;H226-H302-H304-H315-H317 |
| beta-Caryophyllene | 87-44-5 | 0.1-<1% | Skin Sens. 1B-Asp. Tox 1;H304-H317 |
| Sabinene | 127-91-3 | 0.1-<1% | Flam. Liq. 3-Skin Irrit. 2-Skin Sens. 1B-Asp. Tox 1;H226-H304-H315-H317 |
| beta-Pinene | 127-91-3 | 0.1-<1% | Flam. Liq. 3-Skin Irrit. 2-Skin Sens. 1B-Asp. Tox 1;H226-H304-H315-H317 |
| Linalool | 78-70-6 | 0.1-<1% | Flam. Liq. 4-Skin Irrit. 2-Eye Irrit. 2A-Skin Sens. 1B;H227-H315-H317-H319 |
| Geranyl acetate | 105-87-3 | <0.1% | Skin Irrit. 2-Skin Sens. 1;H315-H317 |

The exact percentage concentrations of components are being withheld as a trade secret.

4. FIRST-AID MEASURES

Description of first aid measures

Inhalation: Remove from exposure site to fresh air, keep at rest, and obtain medical attention.

Eye exposure: Flush immediately with water for at least 15 minutes. Contact physician if symptoms persist.

Skin exposure: IF ON SKIN (or hair): Remove/take off immediately all contaminated clothing. Rinse skin with water/shower.

Ingestion: IF SWALLOWED: Immediately call a POISON CENTER or doctor/physician.

Most important symptoms and effects, both acute and delayed

May be fatal if swallowed and enters airways.

Causes skin irritation.

May cause an allergic skin reaction.

Indication of immediate medical attention and special treatment needed, if necessary

Treat symptomatically

5. FIRE-FIGHTING MEASURES

Extinguishing media

Suitable media: Carbon dioxide, Dry chemical, Foam.

Specific hazards arising from the chemical

In case of fire, may be liberated: Carbon monoxide, Unidentified organic compounds.

SAFETY DATA SHEET

In accordance with 29 CFR 1910.1200

Product: Pink Grapefruit Oil
Version: 2

Protective Equipment and Precautions for Firefighters

In case of insufficient ventilation, wear suitable respiratory equipment.

6. ACCIDENTAL RELEASE MEASURES

Personal precautions, protective equipment and emergency procedures:

Avoid inhalation. Avoid contact with skin and eyes. See protective measures under Section 7 and 8.

Methods and material for containment and cleaning up:

Remove ignition sources. Provide adequate ventilation. Avoid excessive inhalation of vapours. Contain spillage immediately by use of sand or inert powder. Dispose of according to local regulations.

7. HANDLING AND STORAGE

Precautions for safe handling:

Keep away from heat, sparks, open flames and hot surfaces. - No smoking.

Conditions for safe storage, including any incompatibilities:

Ground/bond container and receiving equipment.
Use only non-sparking tools.
Take precautionary measures against static discharge.

8. EXPOSURE CONTROLS/PERSONAL PROTECTION

Control parameters

Exposure guidelines

This product does not contain any hazardous materials with occupational exposure limits established by the region specific regulatory bodies.

Other exposure guidelines

No information available

Exposure controls

Engineering measures

Showers, eyewash stations, ventilation systems.

Individual protection measures, such as personal protective equipment

Eye/Face and Skin Protection

Wear protective gloves/eye protection/face protection, and suitable protective clothing

Respiratory protection

If exposure limits are exceeded or irritation is experienced, NIOSH/MSHA approved respiratory protection should be worn. Positive-pressure supplied air respirators may be required for high airborne contaminant concentrations.

SAFETY DATA SHEET

In accordance with 29 CFR 1910.1200

Product: Pink Grapefruit Oil

Version: 2

Respiratory protection must be provided in accordance with current local regulations. A NIOSH-approved air-purifying respirator with an organic vapor cartridge or canister may be permissible under certain circumstances where airborne concentrations are expected to exceed exposure limits. Protection provided by air-purifying respirators is limited. Use a positive pressure, air-supplied respirator if there is any potential for uncontrolled release, exposure levels are not known or any other circumstances where air-purifying respirators may not provide adequate protection.

Hygiene measures

Handle in accordance with good industrial hygiene and safety practice.

9. PHYSICAL AND CHEMICAL PROPERTIES

Physical and chemical properties

| | |
|--|--|
| Appearance: | Not determined |
| Odor: | Not determined |
| Odor threshold: | Not determined |
| pH: | Not determined |
| Melting point / freezing point: | Not determined |
| Initial boiling point / range: | Not determined |
| Flash point: | 118 °F / 48 °C |
| Evaporation rate: | Not determined |
| Flammability (solid, gas): | Not determined |
| Upper/lower flammability or explosive limits: | Product does not present an explosion hazard |
| Vapor pressure: | Not determined |
| Vapor density: | Not determined |
| Relative density: | Not determined |
| Solubility(ies): | Not determined |
| Partition coefficient: n-octanol/water: | Not determined |
| Auto-ignition temperature: | Not determined |
| Decomposition temperature: | Not determined |
| Viscosity: | Not determined |

Other information: None available

10. STABILITY AND REACTIVITY

Reactivity:

Presents no significant reactivity hazard, by itself or in contact with water.

Chemical stability:

Good stability under normal storage conditions.

SAFETY DATA SHEET

In accordance with 29 CFR 1910.1200

Product: Pink Grapefruit Oil

Version: 2

Possibility of hazardous reactions:

Not expected under normal conditions of use.

Conditions to avoid:

Avoid extreme heat.

Incompatible materials:

Avoid contact with strong acids, alkalis or oxidising agents.

Hazardous decomposition products:

Not expected.

11. TOXICOLOGICAL INFORMATION

Information on toxicological effects

| | |
|---|--|
| Acute Toxicity: | Based on available data the classification criteria are not met. |
| Acute Toxicity Oral | Not Applicable |
| Acute Toxicity Dermal | Not Applicable |
| Acute Toxicity Inhalation | Not Available |
| Skin corrosion/irritation: | Skin Corrosion / Irritation Category 2 |
| Serious eye damage/irritation: | Based on available data the classification criteria are not met. |
| Respiratory or skin sensitisation: | Sensitization - Skin Category 1 |
| Germ cell mutagenicity: | Based on available data the classification criteria are not met. |
| Carcinogenicity: | Based on available data the classification criteria are not met. |
| Reproductive toxicity: | Based on available data the classification criteria are not met. |
| STOT-single exposure: | Based on available data the classification criteria are not met. |
| STOT-repeated exposure: | Based on available data the classification criteria are not met. |
| Aspiration hazard: | |

Additional Information None available

12. ECOLOGICAL INFORMATION

Ecotoxicity:

Very toxic to aquatic life with long lasting effects.

Persistence and degradability: Not available

Bioaccumulative potential: Not available

Mobility in soil: Not available

Other adverse effects: Not available

SAFETY DATA SHEET

In accordance with 29 CFR 1910.1200

Product: Pink Grapefruit Oil
Version: 2

13. DISPOSAL CONSIDERATIONS

Waste treatment

Dispose of in accordance with local regulations. Avoid disposing into drainage systems and into the environment. Empty containers should be taken to an approved waste handling site for recycling or disposal.

14. TRANSPORT INFORMATION

| | 14.1 UN number: | 14.2 UN Proper Shipping Name: | 14.3 Transport hazard class(es): | Sub Risk: | 14.4. Packing Group: |
|-----------------------------|-----------------|--|----------------------------------|-----------|----------------------|
| UN Model Regulations | UN1993 | FLAMMABLE LIQUID, N.O.S. (Limonene, Myrcene) | 3 | - | III |
| US DOT | None | - | | | - |
| US DOT (Bulk) | NA1993 | COMBUSTIBLE LIQUID, N.O.S. (Limonene, Myrcene) | | | III |
| IMDG | UN1993 | FLAMMABLE LIQUID, N.O.S. (Limonene, Myrcene, alpha-Pinene) MARINE POLLUTANT | 3 | - | III |
| ADR,RID,ADN | UN1993 | FLAMMABLE LIQUID, N.O.S. (Limonene, Myrcene) | 3 | - | III |
| ICAO TI | UN1993 | FLAMMABLE LIQUID, N.O.S. (Limonene, Myrcene) | 3 | - | III |

US DOT refers to domestic transport by road/rail within the 48 ground states

US DOT (Bulk) refers to domestic bulk transport by road/rail within the 48 ground states.

Environmental hazards: This is an environmentally hazardous substance.

Special precautions for user: None additional

Transport in bulk according to Annex II of MARPOL73/78 and the IBC Code:

Not applicable

15. REGULATORY INFORMATION

Safety, health and environmental regulations/legislation specific for the substance or mixture

None additional

Additional information

None additional

16. OTHER INFORMATION

Key to revisions:

Product identifier

SAFETY DATA SHEET

In accordance with 29 CFR 1910.1200

Product: Pink Grapefruit Oil

Version: 2

The information in this safety data sheet is to the best of our knowledge true and accurate but all data, instructions, recommendations and/or suggestions are made without guarantee.

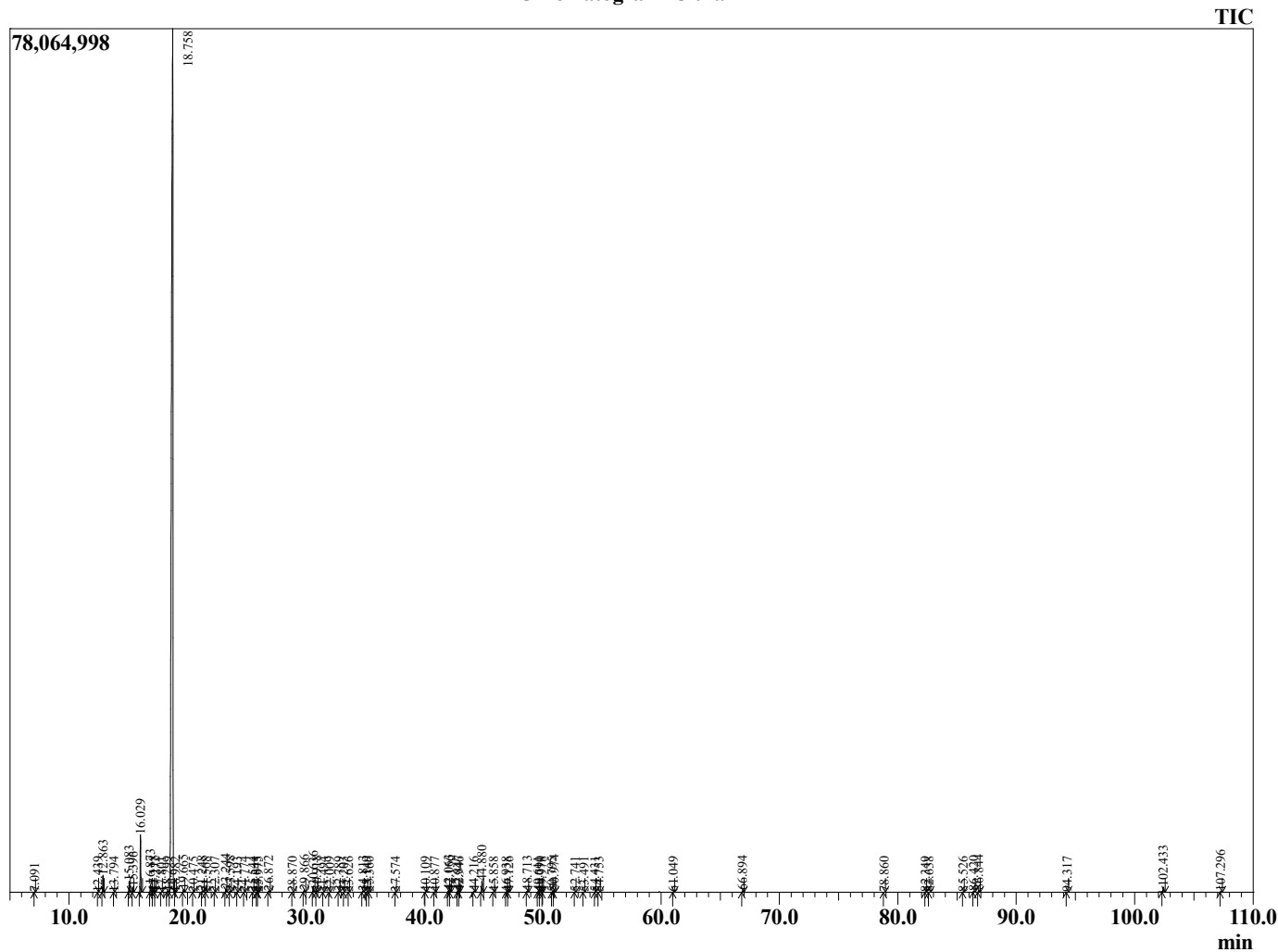
Sample Information

Analyzed by : A. Mattingly
Analyzed : 1/11/2022 6:56:29 PM
Sample Type : Essential Oil
Sample Name : CitPar2
Injection Volume : 0.10 µL
Lot Number : H0F0110B [1-2]
Instrument ID : GC-3

Peak Report TIC

| R.Time | Name | Area% |
|--------|---------------------------------|-------|
| 7.091 | Hexanal | 0.00 |
| 12.439 | alpha-Thujene | 0.00 |
| 12.863 | alpha-Pinene | 0.63 |
| 13.794 | Camphene | 0.00 |
| 15.083 | Sabinene | 0.43 |
| 15.396 | beta-Pinene | 0.21 |
| 16.029 | Myrcene | 2.34 |
| 16.873 | Octanal | 0.32 |
| 17.118 | alpha-Phellandrene | 0.03 |
| 17.272 | delta-3-Carene | 0.00 |
| 17.801 | alpha-Terpinene | 0.00 |
| 18.299 | para-Cymene | 0.03 |
| 18.758 | Limonene | 93.19 |
| 18.982 | (Z)-beta-Ocimene | 0.01 |
| 19.665 | (E)-beta-Ocimene | 0.10 |
| 20.475 | gamma-Terpinene | 0.01 |
| 21.248 | Octanol | 0.05 |
| 21.568 | Unidentified | 0.00 |
| 22.307 | Terpinolene | 0.01 |
| 23.244 | Linalool | 0.13 |
| 23.598 | Nonanal | 0.06 |
| 24.193 | Unidentified | 0.00 |
| 24.774 | trans-para-Mentha-2,8-dien-1-ol | 0.00 |
| 25.544 | cis-Limonene oxide | 0.01 |
| 25.845 | trans-Limonene oxide | 0.00 |
| 25.975 | (E)-Myroxide | 0.00 |
| 26.872 | Citronellal | 0.06 |
| 28.870 | Terpinen-4-ol | 0.00 |
| 29.866 | alpha-Terpineol | 0.11 |
| 30.636 | Decanal | 0.28 |
| 30.918 | Octyl acetate | 0.06 |
| 31.494 | trans-Carveol | 0.00 |
| 32.009 | Citronellol | 0.01 |
| 32.789 | Neral | 0.02 |
| 33.203 | Carvone | 0.00 |
| 33.626 | Geraniol | 0.00 |
| 34.813 | Geranial | 0.04 |
| 35.149 | Decanol | 0.00 |
| 35.360 | Perillaldehyde | 0.01 |
| 37.574 | Undecanal | 0.01 |
| 40.109 | alpha-Terpinyl acetate | 0.01 |
| 40.877 | Neryl acetate | 0.01 |
| 42.063 | alpha-Copaene | 0.10 |
| 42.156 | Geranyl acetate | 0.04 |
| 42.847 | beta-Cubebene | 0.07 |
| 42.946 | beta-Elemene | 0.02 |
| 44.216 | Dodecanal | 0.04 |
| 44.880 | trans-beta-Caryophyllene | 0.61 |
| 45.858 | alpha-Guaiene | 0.01 |
| 46.938 | (E)-beta-Farnesene | 0.02 |
| 47.126 | alpha-Humulene | 0.04 |
| 48.713 | Germacrene D | 0.05 |
| 49.611 | Bicyclogermacrene | 0.02 |
| 49.790 | alpha-Muurolene | 0.01 |
| 49.978 | Unidentified | 0.01 |
| 50.795 | Cubebol | 0.01 |
| 50.974 | delta-Cadinene | 0.09 |
| 52.741 | alpha-Elemol | 0.02 |
| 53.491 | (E)-Nerolidol | 0.00 |
| 54.431 | Germacren D-4-ol | 0.01 |
| 54.753 | Caryophyllene oxide | 0.01 |
| 61.049 | beta-Sinensal | 0.01 |

Chromatogram CitPar2



| R.Time | Name | Area% |
|---------|-----------------------------|--------|
| 66.894 | Nootkatone | 0.08 |
| 78.860 | Methoxsalen | 0.01 |
| 82.349 | Ostole | 0.02 |
| 82.638 | Unidentified | 0.01 |
| 85.526 | Unidentified furanocoumarin | 0.01 |
| 86.420 | Isogeijerin | 0.05 |
| 86.844 | Unidentified | 0.10 |
| 94.317 | Unidentified furanocoumarin | 0.01 |
| 102.433 | Aurapten | 0.28 |
| 107.296 | Unidentified furanocoumarin | 0.03 |
| | | 100.00 |