

## SAFETY DATA SHEET

In accordance with 29 CFR 1910.1200

**Product:** Myrrh Oil, Ethiopia  
**Version:** 2

### 1. IDENTIFICATION

#### Product Identifier

**Product identifier:** Myrrh Oil, Ethiopia; CAS: 8016-37-3  
**Other identifiers:** Myrrh Oil, Ethiopia ComMyr9 Commiphora myrrha

#### Recommended use of the chemical and restrictions on use

**Product uses:**

#### Supplier Details

**Company name:** Artisan Aromatics  
**Company address:** 1708 Lena Street, #103  
Santa Fe, NM 87505  
**Contact:** Stephanie Ariel  
**E-Mail address:** hello@artisanaromatics.com  
**Company phone:** 505-231-9439

#### Emergency telephone number

**Emergency phone:** ChemTel: 1-800-255-3924 (Domestic)

### 2. HAZARD IDENTIFICATION

#### Classification

**This product is classified under 29CFR 1910.1200(d) as follows:**

This material is considered hazardous by the OSHA Hazard Communication Standard (29 CFR 1910.1200)

**Class and category of danger:** Acute Toxicity - Oral Category 4  
Aspiration Hazard Category 1

**Signal word:** Danger

**Hazard statements:** Harmful if swallowed.  
May be fatal if swallowed and enters airways.

**M factor:** None

#### **Pictograms:**



#### **Precautionary statements:**

Wash hands and other contacted skin thoroughly after handling.  
Do not eat, drink or smoke when using this product.  
IF SWALLOWED: Immediately call a POISON CENTER or doctor/physician.

## SAFETY DATA SHEET

In accordance with 29 CFR 1910.1200

**Product:** Myrrh Oil, Ethiopia

**Version:** 2

Rinse mouth.  
Do not induce vomiting.  
Store locked up.  
Dispose of contents/container to approved disposal site, in accordance with local regulations.

**Hazards not otherwise classified (HNOC)** None

### **3. COMPOSITION/INFORMATION ON INGREDIENTS**

#### **Substances**

**Product identifier:** Myrrh Oil, Ethiopia; CAS: 8016-37-3

**Contains:**

Name	CAS	%	GHS Classification
beta-Caryophyllene	87-44-5	0.1-<1%	Skin Sens. 1B-Asp. Tox 1;H304-H317

The exact percentage concentrations of components are being withheld as a trade secret.

### **4. FIRST-AID MEASURES**

#### **Description of first aid measures**

**Inhalation:** Remove from exposure site to fresh air, keep at rest, and obtain medical attention.  
**Eye exposure:** Flush immediately with water for at least 15 minutes. Contact physician if symptoms persist.  
**Skin exposure:** Remove contaminated clothes. Wash thoroughly with soap and water. Contact physician if irritation persists.  
**Ingestion:** IF SWALLOWED: Immediately call a POISON CENTER or doctor/physician.

#### **Most important symptoms and effects, both acute and delayed**

Harmful if swallowed.  
May be fatal if swallowed and enters airways.

#### **Indication of immediate medical attention and special treatment needed, if necessary**

Treat symptomatically

### **5. FIRE-FIGHTING MEASURES**

#### **Extinguishing media**

Suitable media: Carbon dioxide, Dry chemical, Foam.

#### **Specific hazards arising from the chemical**

In case of fire, may be liberated: Carbon monoxide, Unidentified organic compounds.

## SAFETY DATA SHEET

In accordance with 29 CFR 1910.1200

**Product:** Myrrh Oil, Ethiopia

**Version:** 2

### **Protective Equipment and Precautions for Firefighters**

In case of insufficient ventilation, wear suitable respiratory equipment.

## **6. ACCIDENTAL RELEASE MEASURES**

### **Personal precautions, protective equipment and emergency procedures:**

Avoid inhalation. Avoid contact with skin and eyes. See protective measures under Section 7 and 8.

### **Methods and material for containment and cleaning up:**

Remove ignition sources. Provide adequate ventilation. Avoid excessive inhalation of vapours. Contain spillage immediately by use of sand or inert powder. Dispose of according to local regulations.

## **7. HANDLING AND STORAGE**

### **Precautions for safe handling:**

Do not eat, drink or smoke when using this product.

### **Conditions for safe storage, including any incompatibilities:**

Store in a well-ventilated place. Keep container tightly closed. Keep cool. Ground/bond container and receiving equipment. Use explosion-proof electrical, ventilating and lighting equipment. Use only non-sparking tools. Take precautionary measures against static discharge.

## **8. EXPOSURE CONTROLS/PERSONAL PROTECTION**

### **Control parameters**

#### **Exposure guidelines**

This product does not contain any hazardous materials with occupational exposure limits established by the region specific regulatory bodies.

#### **Other exposure guidelines**

No information available

### **Exposure controls**

#### **Engineering measures**

Showers, eyewash stations, ventilation systems.

### **Individual protection measures, such as personal protective equipment**

#### **Eye/Face and Skin Protection**

Wear protective gloves/eye protection/face protection, and suitable protective clothing

#### **Respiratory protection**

If exposure limits are exceeded or irritation is experienced, NIOSH/MSHA approved respiratory protection should be worn. Positive-pressure supplied air respirators may be required for high airborne contaminant concentrations.

## **SAFETY DATA SHEET**

**In accordance with 29 CFR 1910.1200**

**Product:** Myrrh Oil, Ethiopia

**Version:** 2

Respiratory protection must be provided in accordance with current local regulations. A NIOSH-approved air-purifying respirator with an organic vapor cartridge or canister may be permissible under certain circumstances where airborne concentrations are expected to exceed exposure limits. Protection provided by air-purifying respirators is limited. Use a positive pressure, air-supplied respirator if there is any potential for uncontrolled release, exposure levels are not known or any other circumstances where air-purifying respirators may not provide adequate protection.

### **Hygiene measures**

Handle in accordance with good industrial hygiene and safety practice.

## **9. PHYSICAL AND CHEMICAL PROPERTIES**

### **Physical and chemical properties**

<b>Appearance:</b>	Not determined
<b>Odor:</b>	Not determined
<b>Odor threshold:</b>	Not determined
<b>pH:</b>	Not determined
<b>Melting point / freezing point:</b>	Not determined
<b>Initial boiling point / range:</b>	Not determined
<b>Flash point:</b>	≥ 428 °F / ≥ 220 °C
<b>Evaporation rate:</b>	Not determined
<b>Flammability (solid, gas):</b>	Not determined
<b>Upper/lower flammability or explosive limits:</b>	Product does not present an explosion hazard
<b>Vapor pressure:</b>	Not determined
<b>Vapor density:</b>	Not determined
<b>Relative density:</b>	Not determined
<b>Solubility(ies):</b>	Not determined
<b>Partition coefficient: n-octanol/water:</b>	Not determined
<b>Auto-ignition temperature:</b>	Not determined
<b>Decomposition temperature:</b>	Not determined
<b>Viscosity:</b>	Not determined
<b><u>Other information:</u></b>	None available

## **10. STABILITY AND REACTIVITY**

### **Reactivity:**

Presents no significant reactivity hazard, by itself or in contact with water.

### **Chemical stability:**

Good stability under normal storage conditions.

## SAFETY DATA SHEET

In accordance with 29 CFR 1910.1200

**Product:** Myrrh Oil, Ethiopia

**Version:** 2

**Possibility of hazardous reactions:**

Not expected under normal conditions of use.

**Conditions to avoid:**

Avoid extreme heat.

**Incompatible materials:**

Avoid contact with strong acids, alkalis or oxidising agents.

**Hazardous decomposition products:**

Not expected.

### **11. TOXICOLOGICAL INFORMATION**

**Information on toxicological effects**

<b>Acute Toxicity:</b>	Acute Toxicity - Oral Category 4
Acute Toxicity Oral	1650 mg/kg
Acute Toxicity Dermal	Not Applicable
Acute Toxicity Inhalation	Not Available
<b>Skin corrosion/irritation:</b>	Based on available data the classification criteria are not met.
<b>Serious eye damage/irritation:</b>	Based on available data the classification criteria are not met.
<b>Respiratory or skin sensitisation:</b>	Based on available data the classification criteria are not met.
<b>Germ cell mutagenicity:</b>	Based on available data the classification criteria are not met.
<b>Carcinogenicity:</b>	Based on available data the classification criteria are not met.
<b>Reproductive toxicity:</b>	Based on available data the classification criteria are not met.
<b>STOT-single exposure:</b>	Based on available data the classification criteria are not met.
<b>STOT-repeated exposure:</b>	Based on available data the classification criteria are not met.
<b>Aspiration hazard:</b>	

**Additional Information** None available

### **12. ECOLOGICAL INFORMATION**

<b><u>Ecotoxicity:</u></b>	Not available
<b><u>Persistence and degradability:</u></b>	Not available
<b><u>Bioaccumulative potential:</u></b>	Not available
<b><u>Mobility in soil:</u></b>	Not available
<b><u>Other adverse effects:</u></b>	Not available

## SAFETY DATA SHEET

In accordance with 29 CFR 1910.1200

**Product:** Myrrh Oil, Ethiopia  
**Version:** 2

### 13. DISPOSAL CONSIDERATIONS

#### Waste treatment

Dispose of in accordance with local regulations. Avoid disposing into drainage systems and into the environment. Empty containers should be taken to an approved waste handling site for recycling or disposal.

### 14. TRANSPORT INFORMATION

	14.1 UN number:	14.2 UN Proper Shipping Name:	14.3 Transport hazard class(es):	Sub Risk:	14.4. Packing Group:
UN Model Regulations	None	-			-
US DOT	None	-			-
US DOT (Bulk)	None	-			-
IMDG	None	-			-
ADR,RID,ADN	None	-			-
ICAO TI	None	-			-

US DOT refers to domestic transport by road/rail within the 48 ground states

US DOT (Bulk) refers to domestic bulk transport by road/rail within the 48 ground states.

**Environmental hazards:** Not environmentally hazardous for transport

**Special precautions for user:** None additional

**Transport in bulk according to Annex II of MARPOL73/78 and the IBC Code:**

Not classified

### 15. REGULATORY INFORMATION

#### Safety, health and environmental regulations/legislation specific for the substance or mixture

RIFM ID Number: 463-K2.12

LM Unique Identifier: LM6355

#### Additional information

None additional

### 16. OTHER INFORMATION

#### **Key to revisions:**

Product identifier

The information in this safety data sheet is to the best of our knowledge true and accurate but all data, instructions, recommendations and/or suggestions are made without guarantee.

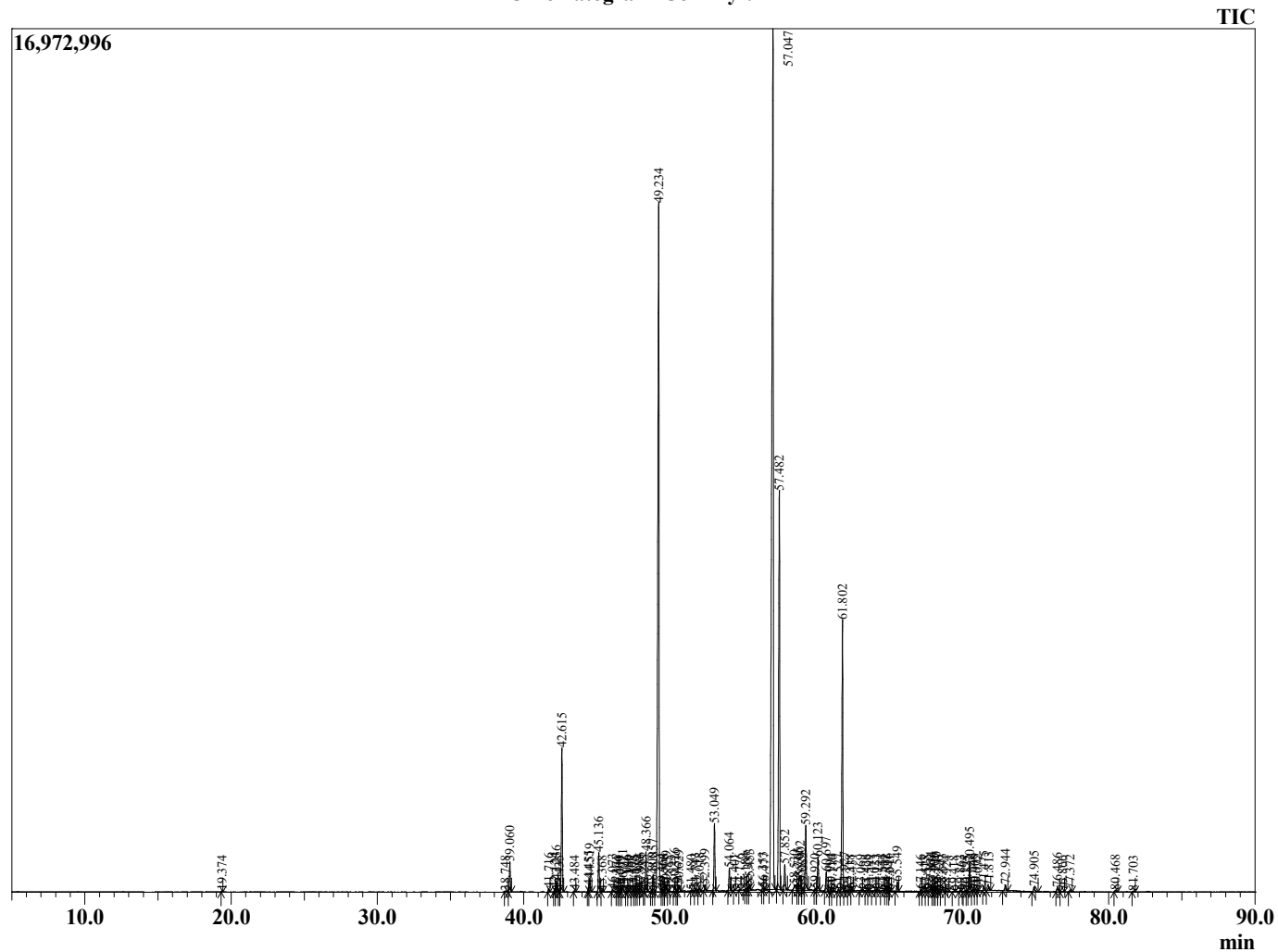
# Sample Information

Analyzed by : J. Scalf  
 Analyzed : 11/21/2022 6:40:55 PM  
 Sample Type : Essential Oil  
 Sample Name : ComMyr9  
 Injection Volume : 0.10 µL  
 Lot Number : K0F1111F  
 Instrument ID : GC-3

# Peak Report TIC

R.Time	Name	Area%
19.374	trans-beta-Ocimene	0.02
38.748	Elemene isomer	0.05
39.060	delta-Elemene	0.74
41.716	alpha-Copaene	0.09
42.124	Elemene isomer	0.08
42.236	beta-Bourbonene	0.29
42.435	alpha-Bourbonene	0.03
42.615	beta-Elemene	3.65
43.484	Cyperene	0.03
44.455	beta-Ylangene	0.10
44.519	beta-Caryophyllene	0.40
45.136	gamma-Elemene	1.05
45.368	trans-alpha-Bergamotene	0.02
46.073	Isogermacrene D	0.06
46.371	6,9-Guanidiene	0.02
46.500	Unidentified	0.01
46.609	trans-beta-Farnesene	0.01
46.771	alpha-Humulene	0.18
47.046	Alloaromodendrene	0.04
47.180	Rotundene	0.02
47.407	Unidentified	0.02
47.575	beta-Cubebene	0.02
47.679	4,5-di-epi-Aristolochene	0.02
47.884	Selina-4,11-diene	0.06
47.986	gamma-Muurolene	0.08
48.245	alpha-Amorphene	0.03
48.366	Germacrene D	1.03
48.800	Valencene	0.07
48.857	beta-Selinene	0.43
49.234	Curzerene	23.18
49.464	alpha-Muurolene	0.07
49.568	(Z)-alpha-Bisabolene	0.05
49.739	delta-Amorphene	0.17
49.885	Unidentified	0.02
50.326	gamma-Cadinene	0.21
50.451	Cubebol	0.02
50.629	delta-Cadinene	0.18
51.480	Unidentified	0.03
51.743	Selina-4(15),7(11)-diene	0.07
52.018	Selina-3,7(11)-diene	0.10
52.399	Unidentified	0.15
53.049	Germacrene B	1.73
54.064	Unidentified	0.58
54.401	Caryophyllene oxide	0.03
54.776	Unidentified	0.03
55.184	Unidentified	0.04
55.337	beta-Elemenone	0.09
55.453	Curzerenone	0.15
56.353	1,10-di-epi-Cubenol	0.06
56.477	Unidentified	0.04
57.047	Furanouedesma-1,3-diene	36.24
57.482	Lindestrene	11.67
57.852	tau-Cadinol	0.70
58.530	Unidentified	0.31
58.765	Selin-11-en-4-alpha-ol	0.19
58.902	Furanodiene	0.55
59.089	Unidentified	0.05
59.292	Intermedeol	1.79
59.920	Curzerenone	0.04
60.123	2-Methoxyfuranodiene A	0.87
60.697	Germacrene	0.57
60.994	Unidentified	0.07

# Chromatogram ComMyr9



R.Time	Name	Area%
61.110	Unidentified	0.05
61.527	Unidentified	0.07
61.802	2-Methoxyfuranodiene B	7.56
61.927	Unidentified	0.12
62.318	Unidentified	0.05
62.431	14-Hydroxy-9-epi-E-Caryophyllene	0.06
63.069	Unidentified	0.03
63.428	Unidentified	0.03
63.599	Unidentified	0.02
64.023	Unidentified	0.05
64.153	Unidentified	0.05
64.544	Unidentified	0.03
64.772	Unidentified	0.07
64.896	Unidentified	0.07
65.041	Unidentified	0.03
65.549	alpha-Eudesmol acetate	0.26
67.146	Unidentified	0.05
67.413	Unidentified	0.02
67.528	Unidentified	0.06
67.834	2-Acetoxyfuranodiene isomer	0.14
67.996	Unidentified	0.10
68.105	Unidentified	0.07
68.210	Unidentified	0.14
68.376	Unidentified	0.03
68.643	Unidentified	0.11
68.924	Unidentified	0.03
69.418	Unidentified	0.03
69.863	Unidentified	0.05
70.195	Unidentified	0.03
70.335	Unidentified	0.03
70.495	2-Acetoxyfuranodiene isomer	0.78
70.746	Unidentified	0.05
70.905	Unidentified	0.06
71.072	Unidentified	0.02
71.475	2-Hydroxyfuranodiene	0.12
71.813	Unidentified	0.12
72.944	Unidentified	0.17
74.905	Unidentified	0.19
76.486	Unidentified	0.17
76.866	Unidentified	0.03
77.372	Unidentified	0.06
80.468	Unidentified	0.06
81.703	Unidentified	0.03
		100.00