



Artisan Aromatics
1708 Lena Street, #103
Santa Fe, NM 87505
(505) 231-9439

SAFETY DATA SHEET

In accordance with 29 CFR 1910.1200

Product: Myrtle Oil, Tunisia

Version: 1

1. IDENTIFICATION

Product Identifier

Product identifier: Myrtle Oil, Tunisia; CAS: 84082-67-7

Other identifiers: Myrtle Oil, Tunisia MyrCom1 Myrtus communis

Recommended use of the chemical and restrictions on use

Product uses: Essential Oil

Supplier Details

Company name: Artisan Aromatics

Company address: 1708 Lena Street, #103

Santa Fe, NM 87505

Contact: Stephanie Ariel

E-Mail address: hello@artisanaromatics.com-

Company phone: 505 231-9439

Emergency telephone number

Emergency phone: ChemTel: 1-800-255-3924 (Domestic)

2. HAZARD IDENTIFICATION

Classification

This product is classified under 29CFR 1910.1200(d) as follows:

This material is considered hazardous by the OSHA Hazard Communication Standard (29 CFR 1910.1200)

Class and category of Flammable Liquid, Hazard Category 3

danger: Skin Corrosion / Irritation Category 2

Sensitization - Skin Category 1

Aspiration Hazard Category 1

Signal word: Danger

Hazard statements: Flammable liquid and vapour.

May be fatal if swallowed and enters airways.

Causes skin irritation.

May cause an allergic skin reaction.

M factor: None

SAFETY DATA SHEET

In accordance with 29 CFR 1910.1200

Product: Myrtle Oil, Tunisia

Version: 1

Pictograms:



Precautionary statements:

Keep away from heat, sparks, open flames and hot surfaces. - No smoking.
Keep container tightly closed.
Ground/bond container and receiving equipment.
Use explosion-proof electrical, ventilating and lighting equipment.
Use only non-sparking tools.
Take precautionary measures against static discharge.
Avoid breathing vapour or dust.
Wash hands and other contacted skin thoroughly after handling.
Contaminated work clothing should not be allowed out of the workplace.
Wear protective gloves/eye protection/face protection.
IF SWALLOWED: Immediately call a POISON CENTER or doctor/physician.
IF ON SKIN (or hair): Remove/take off immediately all contaminated clothing. Rinse skin with water/shower.
Do not induce vomiting.
If skin irritation or rash occurs: Get medical advice/attention.
Take off contaminated clothing and wash before reuse.
In case of fire: Use carbon dioxide, dry chemical, foam for extinction.
Store in a well-ventilated place. Keep cool.
Store locked up.
Dispose of contents/container to approved disposal site, in accordance with local regulations.

Hazards not otherwise classified (HNOC) None

3. COMPOSITION/INFORMATION ON INGREDIENTS

Substances

Product identifier: Myrtle Oil, Tunisia; CAS: 84082-67-7

SAFETY DATA SHEET

In accordance with 29 CFR 1910.1200

Product: Myrtle Oil, Tunisia

Version: 1

Contains:

Name	CAS	%	GHS Classification
alpha-Pinene	80-56-8	20-<50%	Flam. Liq. 3-Acute Tox. 4-Skin Irrit. 2-Skin Sens. 1B-Asp. Tox 1;H226-H302-H304-H315-H317
Eucalyptol	470-82-6	20-<50%	Flam. Liq. 3-Skin Sens. 1B;H226-H317
d-Limonene	5989-27-5	5-<10%	Flam. Liq. 3-Skin Irrit. 2-Skin Sens. 1B-Asp. Tox 1;H226-H304-H315-H317
Geranyl acetate	105-87-3	1-<5%	Skin Irrit. 2-Skin Sens. 1;H315-H317
alpha-Terpineol	98-55-5	1-<5%	Flam. Liq. 4-Skin Irrit. 2-Eye Irrit. 2A;H227-H315-H319
p-Cymene	99-87-6	1-<5%	Flam. Liq. 3-Asp. Tox 1;H226-H304
Linalool	78-70-6	1-<5%	Flam. Liq. 4-Skin Irrit. 2-Eye Irrit. 2A-Skin Sens. 1B;H227-H315-H317-H319
beta-Caryophyllene	87-44-5	0.1-<1%	Skin Sens. 1B-Asp. Tox 1;H304-H317
beta-Pinene	127-91-3	0.1-<1%	Flam. Liq. 3-Skin Irrit. 2-Skin Sens. 1B-Asp. Tox 1;H226-H304-H315-H317
Linalyl acetate	115-95-7	0.1-<1%	Flam. Liq. 4-Skin Irrit. 2-Eye Irrit. 2B-Skin Sens. 1B;H227-H315-H317-H320
delta-3-Carene	13466-78-9	0.1-<1%	Flam. Liq. 3-Skin Irrit. 2-Skin Sens. 1-Asp. Tox 1;H226-H304-H315-H317
Terpinolene	586-62-9	0.1-<1%	Flam. Liq. 4-Skin Sens. 1B-Asp. Tox 1;H227-H304-H317
2,3-Hexanedione	3848-24-6	0.1-<1%	Flam. Liq. 3-STOT RE 2;H226-H373

The exact percentage concentrations of components are being withheld as a trade secret.

4. FIRST-AID MEASURES

Description of first aid measures

Inhalation: Remove from exposure site to fresh air, keep at rest, and obtain medical attention.

Eye exposure: Flush immediately with water for at least 15 minutes. Contact physician if symptoms persist.

Skin exposure: IF ON SKIN (or hair): Remove/take off immediately all contaminated clothing. Rinse skin with water/shower.

Ingestion: IF SWALLOWED: Immediately call a POISON CENTER or doctor/physician.

Most important symptoms and effects, both acute and delayed

May be fatal if swallowed and enters airways.

Causes skin irritation.

May cause an allergic skin reaction.

Indication of immediate medical attention and special treatment needed, if necessary

Treat symptomatically

5. FIRE-FIGHTING MEASURES

Extinguishing media

Suitable media: Carbon dioxide, Dry chemical, Foam.

SAFETY DATA SHEET

In accordance with 29 CFR 1910.1200

Product: Myrtle Oil, Tunisia

Version: 1

Specific hazards arising from the chemical

In case of fire, may be liberated: Carbon monoxide, Unidentified organic compounds.

Protective Equipment and Precautions for Firefighters

In case of insufficient ventilation, wear suitable respiratory equipment.

6. ACCIDENTAL RELEASE MEASURES

Personal precautions, protective equipment and emergency procedures:

Avoid inhalation. Avoid contact with skin and eyes. See protective measures under Section 7 and 8.

Methods and material for containment and cleaning up:

Remove ignition sources. Provide adequate ventilation. Avoid excessive inhalation of vapours. Contain spillage immediately by use of sand or inert powder. Dispose of according to local regulations.

7. HANDLING AND STORAGE

Precautions for safe handling:

Keep away from heat, sparks, open flames and hot surfaces. - No smoking.

Conditions for safe storage, including any incompatibilities:

Ground/bond container and receiving equipment.

Use only non-sparking tools.

Take precautionary measures against static discharge.

8. EXPOSURE CONTROLS/PERSONAL PROTECTION

Control parameters

Exposure guidelines

This product does not contain any hazardous materials with occupational exposure limits established by the region specific regulatory bodies.

Other exposure guidelines

No information available

Exposure controls

Engineering measures

Showers, eyewash stations, ventilation systems.

Individual protection measures, such as personal protective equipment

Eye/Face and Skin Protection

SAFETY DATA SHEET

In accordance with 29 CFR 1910.1200

Product: Myrtle Oil, Tunisia

Version: 1

Wear protective gloves/eye protection/face protection, and suitable protective clothing

Respiratory protection

If exposure limits are exceeded or irritation is experienced, NIOSH/MSHA approved respiratory protection should be worn. Positive-pressure supplied air respirators may be required for high airborne contaminant concentrations. Respiratory protection must be provided in accordance with current local regulations. A NIOSH-approved air-purifying respirator with an organic vapor cartridge or canister may be permissible under certain circumstances where airborne concentrations are expected to exceed exposure limits. Protection provided by air-purifying respirators is limited. Use a positive pressure, air-supplied respirator if there is any potential for uncontrolled release, exposure levels are not known or any other circumstances where air-purifying respirators may not provide adequate protection.

Hygiene measures

Handle in accordance with good industrial hygiene and safety practice.

9. PHYSICAL AND CHEMICAL PROPERTIES

Physical and chemical properties

Appearance:	Not determined
Odor:	Not determined
Odor threshold:	Not determined
pH:	Not determined
Melting point / freezing point:	Not determined
Initial boiling point / range:	Not determined
Flash point:	113 °F / 45 °C
Evaporation rate:	Not determined
Flammability (solid, gas):	Not determined
Upper/lower flammability or explosive limits:	Product does not present an explosion hazard
Vapor pressure:	Not determined
Vapor density:	Not determined
Relative density:	Not determined
Solubility(ies):	Not determined
Partition coefficient: n-octanol/water:	Not determined
Auto-ignition temperature:	Not determined
Decomposition temperature:	Not determined
Viscosity:	Not determined
<u>Other information:</u>	None available

10. STABILITY AND REACTIVITY

Reactivity:

Presents no significant reactivity hazard, by itself or in contact with water.

SAFETY DATA SHEET

In accordance with 29 CFR 1910.1200

Product: Myrtle Oil, Tunisia

Version: 1

Chemical stability:

Good stability under normal storage conditions.

Possibility of hazardous reactions:

Not expected under normal conditions of use.

Conditions to avoid:

Avoid extreme heat.

Incompatible materials:

Avoid contact with strong acids, alkalis or oxidising agents.

Hazardous decomposition products:

Not expected.

11. TOXICOLOGICAL INFORMATION

Information on toxicological effects

Acute Toxicity:	Based on available data the classification criteria are not met.
Acute Toxicity Oral	3982 mg/kg
Acute Toxicity Dermal	Not Applicable
Acute Toxicity Inhalation	Not Available
Skin corrosion/irritation:	Skin Corrosion / Irritation Category 2
Serious eye damage/irritation:	Based on available data the classification criteria are not met.
Respiratory or skin sensitisation:	Sensitization - Skin Category 1
Germ cell mutagenicity:	Based on available data the classification criteria are not met.
Carcinogenicity:	Based on available data the classification criteria are not met.
Reproductive toxicity:	Based on available data the classification criteria are not met.
STOT-single exposure:	Based on available data the classification criteria are not met.
STOT-repeated exposure:	Based on available data the classification criteria are not met.
Aspiration hazard:	

Additional Information

None available

12. ECOLOGICAL INFORMATION

Ecotoxicity:

Toxic to aquatic life with long lasting effects.

Persistence and degradability: Not available

Bioaccumulative potential: Not available

Mobility in soil: Not available

SAFETY DATA SHEET

In accordance with 29 CFR 1910.1200

Product: Myrtle Oil, Tunisia

Version: 1

Other adverse effects: Not available

13. DISPOSAL CONSIDERATIONS

Waste treatment

Dispose of in accordance with local regulations. Avoid disposing into drainage systems and into the environment. Empty containers should be taken to an approved waste handling site for recycling or disposal.

14. TRANSPORT INFORMATION

	14.1 UN number:	14.2 UN Proper Shipping Name:	14.3 Transport hazard class(es):	Sub Risk:	14.4. Packing Group:
UN Model Regulations	UN1169	EXTRACTS, AROMATIC, LIQUID	3	-	III
US DOT	None	-			-
US DOT (Bulk)	NA1993	COMBUSTIBLE LIQUID, N.O.S. (alpha-Pinene, Eucalyptol)			III
IMDG	UN1169	EXTRACTS, AROMATIC, LIQUID (alpha-Pinene) MARINE POLLUTANT	3	-	III
ADR,RID,ADN	UN1169	EXTRACTS, AROMATIC, LIQUID	3	-	III
ICAO TI	UN1169	EXTRACTS, AROMATIC, LIQUID	3	-	III

US DOT refers to domestic transport by road/rail within the 48 ground states

US DOT (Bulk) refers to domestic bulk transport by road/rail within the 48 ground states.

Environmental hazards: This is an environmentally hazardous substance.

Special precautions for user: None additional

Transport in bulk according to Annex II of MARPOL73/78 and the IBC Code:

Not applicable

15. REGULATORY INFORMATION

Safety, health and environmental regulations/legislation specific for the substance or mixture

RIFM ID Number: 1083-E2.12

LM Unique Identifier: LM7603

Additional information

None additional

16. OTHER INFORMATION

Key to revisions:

SAFETY DATA SHEET

In accordance with 29 CFR 1910.1200

Product: Myrtle Oil, Tunisia

Version: 1

Not applicable

The information in this safety data sheet is to the best of our knowledge true and accurate but all data, instructions, recommendations and/or suggestions are made without guarantee.

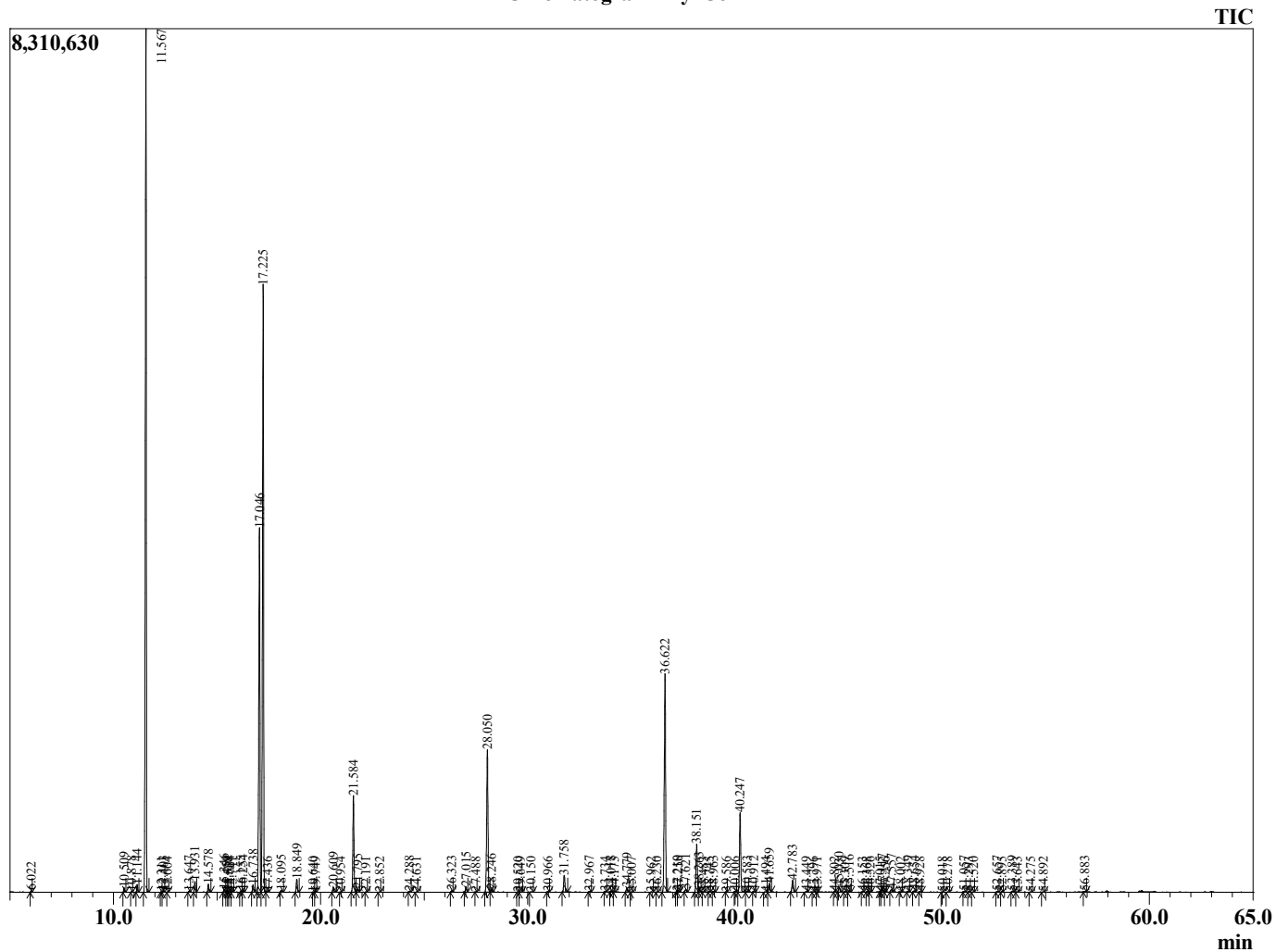
Sample Information

Analyzed by : J. Scalf
 Analyzed : 02/10/2023 5:18:33 PM
 Sample Type : Essential Oil
 Sample Name : MyrCom1
 Injection Volume : 0.10 µL
 Lot Number : L0G0208M
 Instrument ID : GC-2

Peak Report TIC

R.Time	Name	Area%
3.815	2-Methylbutanal	0.01
6.022	Acetylbutyryl	0.03
10.509	Isobutyl isobutyrate	0.13
10.878	Hashishene	0.03
11.144	alpha-Thujene	0.23
11.567	alpha-Pinene	30.01
12.311	alpha-Fenchene	0.02
12.403	Camphene	0.05
12.604	Thuja-2,4(10)diene	0.01
13.647	Sabinene	0.04
13.931	beta-Pinene	0.35
14.578	Myrcene	0.29
15.346	Isobutyl 2-methylbutyrate	0.11
15.459	Pseudolimonene	0.03
15.538	cis-Dehydrolinalool oxide	0.01
15.604	alpha-Phellandrene	0.03
15.741	delta-3-Carene	0.02
16.155	2-Methylbutyl isobutyrate	0.05
16.254	alpha-Terpinene	0.07
16.738	para-Cymene	0.27
17.046	Limonene	15.09
17.225	1,8-Cineole	22.71
17.436	cis-beta-Ocimene	0.02
18.095	trans-beta-Ocimene	0.07
18.849	gamma-Terpinene	0.46
19.640	cis-Linalool oxide (furanoid)	0.01
19.749	Pinol	0.01
20.609	Terpinolene	0.19
20.954	para-Cymenene	0.01
21.584	Linalool	3.69
21.795	2-Methylbutyl-2-methylbutyrate	0.13
22.191	Unidentified	0.01
22.852	Unidentified	0.01
24.288	trans-Pinocarveol	0.03
24.631	trans-Verbenol	0.01
26.323	delta-Terpineol	0.05
27.015	Terpinen-4-ol	0.21
27.488	Unidentified	0.01
28.050	alpha-Terpineol	6.39
28.246	Estragole	0.10
29.520	Unidentified	0.01
29.649	trans-Carveol	0.01
30.150	Unidentified	0.01
30.966	Unidentified	0.02
31.758	Geraniol	0.72
32.967	Geranial	0.04
33.734	Unidentified	0.02
34.018	Bornyl acetate	0.05
34.173	Isobornyl acetate	0.01
34.779	trans-Pinocarvyl acetate	0.17
35.007	Unidentified	0.01
35.962	Unidentified	0.01
36.230	Unidentified	0.01
36.622	Myrtenyl acetate	9.85
37.210	beta-Terpinyl acetate	0.02
37.258	cis-Carveol	0.07
37.621	exo-2-Hydroxycineole acetate analogue	0.11
38.151	alpha-Terpinyl acetate	2.10
38.263	gamma-Terpinyl acetate	0.19
38.483	Eugenol	0.01
38.745	Unidentified	0.01
38.963	Neryl acetate	0.03

Chromatogram MyrCom1



R.Time	Name	Area%
39.586	alpha-Ylangene	0.01
40.006	alpha-Copaene	0.01
40.247	Geranyl acetate	3.43
40.583	Myrtanol acetate	0.04
40.912	beta-Elemene	0.04
41.494	Unidentified	0.01
41.659	Methyleugenol	0.37
42.783	beta-Caryophyllene	0.57
43.449	Unidentified	0.02
43.796	Unidentified	0.01
43.971	Unidentified	0.00
44.802	Unidentified	0.01
45.030	alpha-Humulene	0.24
45.309	Alloaromodendrene	0.02
45.516	Myrtenyl isobutyrate	0.07
46.153	Selina-4,11-diene	0.02
46.368	gamma-Gurjunene	0.01
46.526	alpha-Amorphene	0.02
47.015	Unidentified	0.01
47.117	beta-Selinene	0.13
47.256	Unidentified	0.01
47.557	alpha-Selinene	0.14
48.002	delta-Cadinene	0.01
48.349	Geranyl isobutyrate	0.04
48.654	Unidentified	0.06
48.928	beta-Cadinene	0.02
50.018	Selina-4(15),7(11)-diene	0.01
50.278	Unidentified	0.01
51.057	Unidentified	0.03
51.293	Germacrene B	0.02
51.520	Unidentified	0.01
52.657	Caryophyllene oxide	0.03
52.895	Globulol	0.02
53.389	Viridiflorol	0.04
53.643	Geranyl 2-methylbutyrate	0.02
54.275	Humulene epoxide II	0.01
54.892	Unidentified	0.01
56.883	Unidentified	0.03
		100.00