



Artisan Aromatics
1708 Lena Street, #103
Santa Fe, NM 87505
(505) 231-9439

SAFETY DATA SHEET

In accordance with 29 CFR 1910.1200

Product: Jasmine Grandiflorum Absolute, India

Version: 1

1. IDENTIFICATION

Product Identifier

Product identifier: Jasmine Grandiflorum Absolute, India; CAS: 84776-64-7

Other identifiers: Jasmine Grandiflorum Absolute, India JasGrA1 Jasminum grandiflorum

Recommended use of the chemical and restrictions on use

Product uses: Essential Oil

Supplier Details

Company name: Artisan Aromatics

Company address: 1708 Lena Street, #103
Santa Fe, NM 87505

Contact: Stephanie Ariel

E-Mail address: hello@artisanaromatics.com

Company phone: 505-231-9439

Emergency telephone number

Emergency phone: ChemTel: 1-800-255-3924 (Domestic)

2. HAZARD IDENTIFICATION

Classification

This product is classified under 29CFR 1910.1200(d) as follows:

This material is considered hazardous by the OSHA Hazard Communication Standard (29 CFR 1910.1200)

Class and category of danger: Flammable Liquid, Hazard Category 4
Skin Corrosion / Irritation Category 2
Eye Damage / Irritation Category 2A
Sensitization - Skin Category 1

Signal word: Warning

Hazard statements: Combustible liquid.
Causes skin irritation.
May cause an allergic skin reaction.
Causes serious eye irritation.

M factor: None

SAFETY DATA SHEET

In accordance with 29 CFR 1910.1200

Product: Jasmine Grandiflorum Absolute, India

Version: 1

Pictograms:



Precautionary statements:

Keep away from heat, sparks, open flames and hot surfaces. - No smoking.
Avoid breathing vapour or dust.
Wash hands and other contacted skin thoroughly after handling.
Contaminated work clothing should not be allowed out of the workplace.
Wear protective gloves/eye protection/face protection.
IF ON SKIN: Wash with plenty of soap and water.
IF IN EYES: Rinse cautiously with water for several minutes. Remove contact lenses, if present and easy to do. Continue rinsing.
If skin irritation or rash occurs: Get medical advice/attention.
If eye irritation persists: Get medical advice/attention.
Take off contaminated clothing and wash before reuse.
In case of fire: Use carbon dioxide, dry chemical, foam for extinction.
Store in a well-ventilated place. Keep cool.
Dispose of contents/container to approved disposal site, in accordance with local regulations.

Hazards not otherwise classified (HNOC) None

3. COMPOSITION/INFORMATION ON INGREDIENTS

Substances

Product identifier: Jasmine Grandiflorum Absolute, India; CAS: 84776-64-7

Contains:

Name	CAS	%	GHS Classification
Benzyl benzoate	120-51-4	10-<20%	Acute Tox. 4;H302
Linalool	78-70-6	10-<20%	Flam. Liq. 4-Skin Irrit. 2-Eye Irrit. 2A-Skin Sens. 1B;H227-H315-H317-H319
Isophytol	505-32-8	1-<5%	Skin Irrit. 2;H315
Phytol	150-86-7	1-<5%	Skin Irrit. 2;H315
Eugenol	97-53-0	1-<5%	Eye Irrit. 2A-Skin Sens. 1B;H317-H319
cis-Jasmone	488-10-8	1-<5%	Skin Irrit. 2-Eye Irrit. 2B;H315-H320
Indole	120-72-9	1-<5%	Acute Tox. 4-Acute Tox. 3-Eye Dam. 1; H302-H311-H318
Benzyl alcohol	100-51-6	1-<5%	Acute Tox. 4-Eye Irrit. 2A;H302-H319
Geranyl linalool	1113-21-9	1-<5%	Skin Irrit. 2;H315
trans-Nerolidol	40716-66-3	0.1-<1%	Eye Irrit. 2B-Skin Sens. 1B;H317-H320

SAFETY DATA SHEET

In accordance with 29 CFR 1910.1200

Product: Jasmine Grandiflorum Absolute, India

Version: 1

The exact percentage concentrations of components are being withheld as a trade secret.

4. FIRST-AID MEASURES

Description of first aid measures

Inhalation: Remove from exposure site to fresh air, keep at rest, and obtain medical attention.
Eye exposure: IF IN EYES: Rinse cautiously with water for several minutes. Remove contact lenses, if present and easy to do. Continue rinsing.
Skin exposure: IF ON SKIN: Wash with plenty of soap and water.
Ingestion: Rinse mouth with water and obtain medical attention.

Most important symptoms and effects, both acute and delayed

Causes skin irritation.
May cause an allergic skin reaction.
Causes serious eye irritation.

Indication of immediate medical attention and special treatment needed, if necessary

Treat symptomatically

5. FIRE-FIGHTING MEASURES

Extinguishing media

Suitable media: Carbon dioxide, Dry chemical, Foam.

Specific hazards arising from the chemical

In case of fire, may be liberated: Carbon monoxide, Unidentified organic compounds.

Protective Equipment and Precautions for Firefighters

In case of insufficient ventilation, wear suitable respiratory equipment.

6. ACCIDENTAL RELEASE MEASURES

Personal precautions, protective equipment and emergency procedures:

Avoid inhalation. Avoid contact with skin and eyes. See protective measures under Section 7 and 8.

Methods and material for containment and cleaning up:

Remove ignition sources. Provide adequate ventilation. Avoid excessive inhalation of vapours. Contain spillage immediately by use of sand or inert powder. Dispose of according to local regulations.

SAFETY DATA SHEET

In accordance with 29 CFR 1910.1200

Product: Jasmine Grandiflorum Absolute, India

Version: 1

7. HANDLING AND STORAGE

Precautions for safe handling:

Keep away from heat, sparks, open flames and hot surfaces. - No smoking. Use personal protective equipment as required. Use in accordance with good manufacturing and industrial hygiene practices. Use in areas with adequate ventilation. Do not eat, drink or smoke when using this product.

Conditions for safe storage, including any incompatibilities:

Store in a well-ventilated place. Keep container tightly closed. Keep cool. Ground/bond container and receiving equipment. Use explosion-proof electrical, ventilating and lighting equipment. Use only non-sparking tools. Take precautionary measures against static discharge.

8. EXPOSURE CONTROLS/PERSONAL PROTECTION

Control parameters

Exposure guidelines

This product does not contain any hazardous materials with occupational exposure limits established by the region specific regulatory bodies.

Other exposure guidelines

No information available

Exposure controls

Engineering measures

Showers, eyewash stations, ventilation systems.

Individual protection measures, such as personal protective equipment

Eye/Face and Skin Protection

Wear protective gloves/eye protection/face protection, and suitable protective clothing

Respiratory protection

If exposure limits are exceeded or irritation is experienced, NIOSH/MSHA approved respiratory protection should be worn. Positive-pressure supplied air respirators may be required for high airborne contaminant concentrations. Respiratory protection must be provided in accordance with current local regulations. A NIOSH-approved air-purifying respirator with an organic vapor cartridge or canister may be permissible under certain circumstances where airborne concentrations are expected to exceed exposure limits. Protection provided by air-purifying respirators is limited. Use a positive pressure, air-supplied respirator if there is any potential for uncontrolled release, exposure levels are not known or any other circumstances where air-purifying respirators may not provide adequate protection.

Hygiene measures

Handle in accordance with good industrial hygiene and safety practice.

9. PHYSICAL AND CHEMICAL PROPERTIES

Physical and chemical properties

Appearance: Not determined

SAFETY DATA SHEET

In accordance with 29 CFR 1910.1200

Product: Jasmine Grandiflorum Absolute, India

Version: 1

Odor:	Not determined
Odor threshold:	Not determined
pH:	Not determined
Melting point / freezing point:	Not determined
Initial boiling point / range:	Not determined
Flash point:	198 °F / 92 °C
Evaporation rate:	Not determined
Flammability (solid, gas):	Not determined
Upper/lower flammability or explosive limits:	Product does not present an explosion hazard
Vapor pressure:	Not determined
Vapor density:	Not determined
Relative density:	Not determined
Solubility(ies):	Not determined
Partition coefficient: n-octanol/water:	Not determined
Auto-ignition temperature:	Not determined
Decomposition temperature:	Not determined
Viscosity:	Not determined
<u>Other information:</u>	None available

10. STABILITY AND REACTIVITY

Reactivity:

Presents no significant reactivity hazard, by itself or in contact with water.

Chemical stability:

Good stability under normal storage conditions.

Possibility of hazardous reactions:

Not expected under normal conditions of use.

Conditions to avoid:

Avoid extreme heat.

Incompatible materials:

Avoid contact with strong acids, alkalis or oxidising agents.

Hazardous decomposition products:

Not expected.

SAFETY DATA SHEET

In accordance with 29 CFR 1910.1200

Product: Jasmine Grandiflorum Absolute, India
Version: 1

11. TOXICOLOGICAL INFORMATION

Information on toxicological effects

Acute Toxicity: Based on available data the classification criteria are not met.
 Acute Toxicity Oral 3110
 Acute Toxicity Dermal >5000
 Acute Toxicity Inhalation Not Available
Skin corrosion/irritation: Skin Corrosion / Irritation Category 2
Serious eye damage/irritation: Eye Damage / Irritation Category 2A
Respiratory or skin sensitisation: Sensitization - Skin Category 1
Germ cell mutagenicity: Based on available data the classification criteria are not met.
Carcinogenicity: Based on available data the classification criteria are not met.
Reproductive toxicity: Based on available data the classification criteria are not met.
STOT-single exposure: Based on available data the classification criteria are not met.
STOT-repeated exposure: Based on available data the classification criteria are not met.
Aspiration hazard: Based on available data the classification criteria are not met.

Additional Information None available

12. ECOLOGICAL INFORMATION

Ecotoxicity:

Very toxic to aquatic life.
Toxic to aquatic life with long lasting effects.

Persistence and degradability: Not available

Bioaccumulative potential: Not available

Mobility in soil: Not available

Other adverse effects: Not available

13. DISPOSAL CONSIDERATIONS

Waste treatment

Dispose of in accordance with local regulations. Avoid disposing into drainage systems and into the environment. Empty containers should be taken to an approved waste handling site for recycling or disposal.

14. TRANSPORT INFORMATION

	14.1 UN number:	14.2 UN Proper Shipping Name:	14.3 Transport hazard class(es):	Sub Risk:	14.4. Packing Group:

SAFETY DATA SHEET

In accordance with 29 CFR 1910.1200

Product: Jasmine Grandiflorum Absolute, India

Version: 1

UN Model Regulations	UN3082	ENVIRONMENTALLY HAZARDOUS SUBSTANCE, LIQUID, N.O.S. (Isophytol, Phytol)	9	-	III
US DOT	None	-			-
US DOT (Bulk)	None	-			-
IMDG	UN3082	ENVIRONMENTALLY HAZARDOUS SUBSTANCE, LIQUID, N.O.S. (Isophytol, Phytol) MARINE POLLUTANT	9	-	III
ADR,RID,ADN	UN3082	ENVIRONMENTALLY HAZARDOUS SUBSTANCE, LIQUID, N.O.S. (Isophytol, Phytol)	9	-	III
ICAO TI	UN3082	ENVIRONMENTALLY HAZARDOUS SUBSTANCE, LIQUID, N.O.S. (Isophytol, Phytol)	9	-	III

US DOT refers to domestic transport by road/rail within the 48 ground states

US DOT (Bulk) refers to domestic bulk transport by road/rail within the 48 ground states.

Environmental hazards: This is an environmentally hazardous substance.

Special precautions for user: None additional

Transport in bulk according to Annex II of MARPOL73/78 and the IBC Code:

Not applicable

15. REGULATORY INFORMATION

Safety, health and environmental regulations/legislation specific for the substance or mixture

RIFM ID Number: 81-F2.1

LM Unique Identifier: LM4884

Additional information

None additional

16. OTHER INFORMATION

Key to revisions:

Not applicable

The information in this safety data sheet is to the best of our knowledge true and accurate but all data, instructions, recommendations and/or suggestions are made without guarantee.

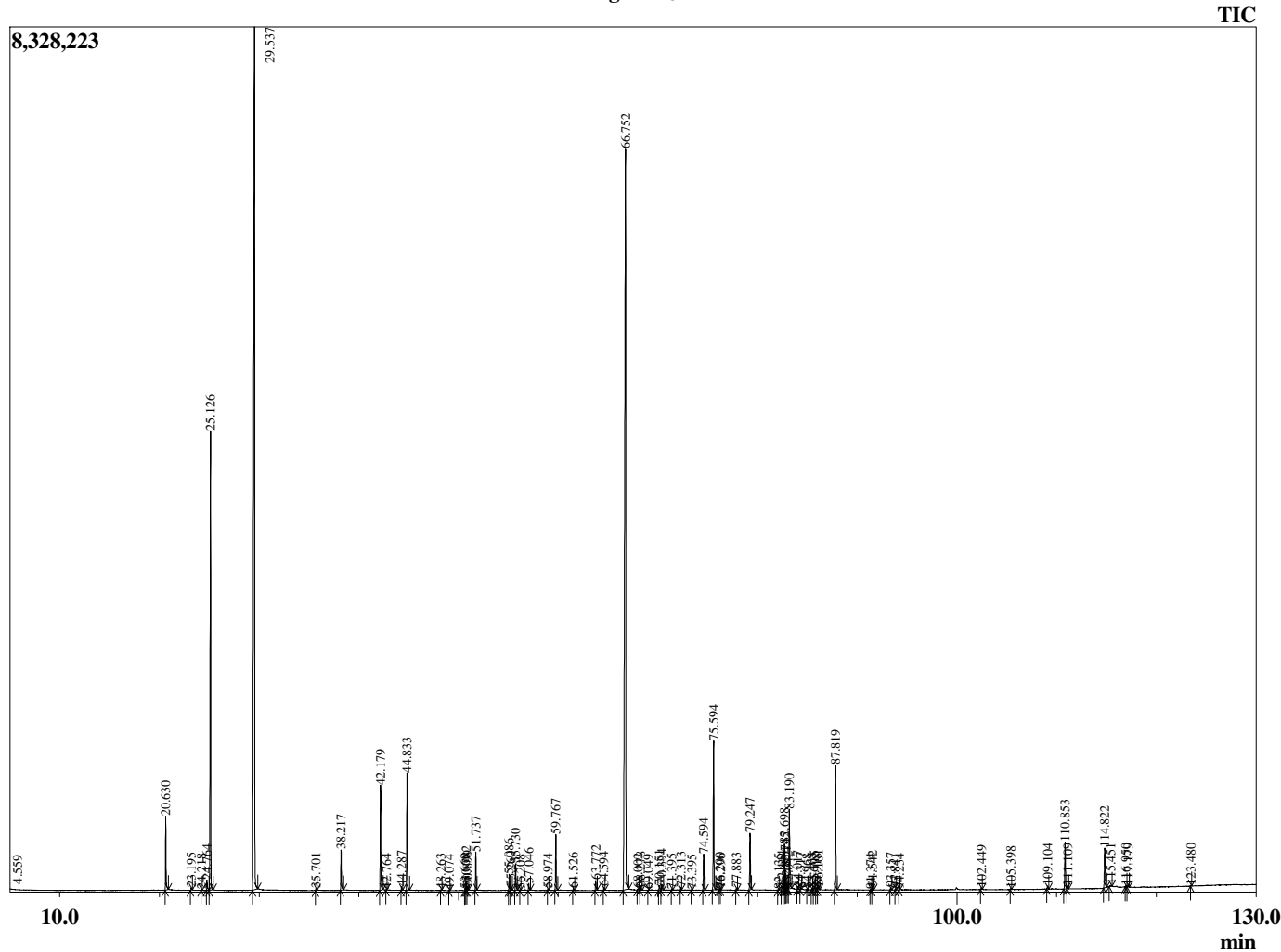
Sample Information

Analyzed by : A. Mattingly
 Analyzed : 10/14/2021 10:51:32 PM
 Sample Type : Essential Oil
 Sample Name : JasGrA1
 Injection Volume : 0.10 µL
 Lot Number : J0E1007D
 Instrument ID : GC-2

Peak Report TIC

R.Time	Name	Area%
3.731	Ethanol	0.04
4.559	Ethyl acetate	0.03
20.630	Benzyl alcohol	1.45
23.195	para-Cresol	0.06
24.218	trans-Linalool oxide (furanoid)	0.02
24.764	Methyl benzoate	0.25
25.126	Linalool	10.78
29.537	Benzyl acetate	31.78
35.701	2-Phenethyl acetate	0.04
38.217	Indole	0.92
42.179	Eugenol	2.32
42.764	Unidentified	0.01
44.287	(E)-Jasmone	0.07
44.833	(Z)-Jasmone	2.58
48.263	Unidentified	0.02
49.074	Unidentified	0.01
50.660	Unidentified	0.02
50.782	Jasmin lactone	0.19
50.899	(Z,E)-alpha-Farnesene	0.09
51.737	(E,E)-alpha-Farnesene	0.84
55.086	(E)-Nerolidol	0.36
55.260	Unidentified	0.08
55.730	(Z)-3-Hexenyl benzoate	0.61
56.208	Hexyl benzoate	0.01
57.046	Methyl N-acetylanthranilate	0.17
58.974	Unidentified	0.03
59.767	cis-Methyl jasmonate	1.26
61.526	Methyl jasmonate isomer	0.05
63.772	(2E,6E)-Farnesol	0.24
64.594	Unidentified	0.08
66.752	Benzyl benzoate	29.28
68.002	Unidentified	0.04
68.278	Unidentified	0.06
69.049	Unidentified	0.01
70.151	Neophytadiene	0.12
70.394	Phytone	0.15
71.395	Unidentified	0.02
72.313	Unidentified	0.06
73.395	Unidentified	0.01
74.594	Methyl palmitate	0.85
75.594	Isophytol	3.45
76.200	Palmitic acid	0.05
76.296	Unidentified	0.02
77.883	Ethyl palmitate	0.05
79.247	(E,E)-Geranyl linalool	1.34
82.135	Unidentified	0.03
82.444	Methyl linoleate	0.10
82.698	Methyl linolenate	1.03
82.745	Methyl oleate	0.40
82.874	Heneicosane	0.13
83.042	Unidentified	0.04
83.190	Phytol	2.02
84.017	Methyl stearate	0.07
84.317	Unidentified	0.03
84.968	Unidentified	0.02
85.465	Ethyl linolate	0.04
85.715	Ethyl linolenate	0.09
85.918	Unidentified	0.03
86.101	Unidentified	0.11
87.819	Phytol acetate	2.92
91.374	Unidentified	0.02
91.542	Unidentified	0.10

Chromatogram JasGrA1



R.Time	Name	Area%
93.357	Unidentified	0.05
93.841	Unidentified	0.03
94.234	Unidentified	0.01
102.449	Unidentified	0.05
105.398	Unidentified	0.02
109.104	Unidentified	0.08
110.853	Squalene	1.27
111.109	Unidentified	0.07
114.822	2,3-Epoxy-2,3-dihydrosqualene	1.12
115.451	Unidentified	0.06
116.950	Benzyl sterate	0.05
117.179	Unidentified	0.05
123.480	Unidentified	0.01
		100.00