

SAFETY DATA SHEET

In accordance with 29 CFR 1910.1200

Product: Copaiba Balsam Oil, Brazil
Version: 2

1. IDENTIFICATION

Product Identifier

Product identifier: Copaiba Balsam Oil, Brazil; CAS: 8001-61-4
Other identifiers: Copaiba Balsam Oil, Brazil CopLan3 Copaifera langsdorffii

Recommended use of the chemical and restrictions on use

Product uses: Essential Oil

Supplier Details

Company name: Artisan Aromatics
Company address: 1708 Lena Street, #103
Santa Fe, NM 87505
Contact: Stephanie Ariel
hello@artisanaromatics.com
E-Mail address:
Company phone: 505 231-9439

Emergency telephone number

Emergency phone: ChemTel: 1-800-255-3924 (Domestic)

2. HAZARD IDENTIFICATION

Classification

This product is classified under 29CFR 1910.1200(d) as follows:

This material is considered hazardous by the OSHA Hazard Communication Standard (29 CFR 1910.1200)

Class and category of danger: Sensitization - Skin Category 1
Aspiration Hazard Category 1

Signal word: Danger

Hazard statements: May be fatal if swallowed and enters airways.
May cause an allergic skin reaction.

M factor: None

Pictograms:



Precautionary statements: Avoid breathing vapour or dust.
Contaminated work clothing should not be allowed out of the workplace.
Wear protective gloves/eye protection/face protection.

SAFETY DATA SHEET

In accordance with 29 CFR 1910.1200

Product: Copaiba Balsam Oil, Brazil

Version: 2

IF SWALLOWED: Immediately call a POISON CENTER or doctor/physician.
IF ON SKIN: Wash with plenty of soap and water.
Do not induce vomiting.
If skin irritation or rash occurs: Get medical advice/attention.
Wash contaminated clothing before reuse.
Store locked up.
Dispose of contents/container to approved disposal site, in accordance with local regulations.

Hazards not otherwise classified (HNOC) None

3. COMPOSITION/INFORMATION ON INGREDIENTS

Substances

Product identifier: Copaiba Balsam Oil, Brazil; CAS: 8001-61-4

Contains:

Name	CAS	%	GHS Classification
beta-Caryophyllene	87-44-5	50-100%	Skin Sens. 1B-Asp. Tox 1;H304-H317
l-.beta.-Bisabolene	495-61-4	1-<5%	Skin Irrit. 2-Skin Sens. 1B-Asp. Tox 1; H304-H315-H317
trans-alpha-Bisabolene	25532-79-0	0.1-<1%	Skin Irrit. 2-Skin Sens. 1B-Asp. Tox 1; H304-H315-H317
cis-alpha-Bisabolene	29837-07-8	0.1-<1%	Skin Irrit. 2-Skin Sens. 1B-Asp. Tox 1; H304-H315-H317
gamma-Bisabolene	53585-13-0	0.1-<1%	Skin Irrit. 2-Skin Sens. 1B-Asp. Tox 1; H304-H315-H317
dl-Camphor	21368-68-3	0.1-<1%	Flam. Liq. 4-Flam. Sol. 2-Acute Tox. 4-Acute Tox. 4-STOT SE 2;H227-H228-H302-H332-H371

The exact percentage concentrations of components are being withheld as a trade secret.

4. FIRST-AID MEASURES

Description of first aid measures

Inhalation: Remove from exposure site to fresh air, keep at rest, and obtain medical attention.
Eye exposure: Flush immediately with water for at least 15 minutes. Contact physician if symptoms persist.
Skin exposure: IF ON SKIN: Wash with plenty of soap and water.
Ingestion: IF SWALLOWED: Immediately call a POISON CENTER or doctor/physician.

Most important symptoms and effects, both acute and delayed

May be fatal if swallowed and enters airways.
May cause an allergic skin reaction.

Indication of immediate medical attention and special treatment needed, if necessary

Treat symptomatically



SAFETY DATA SHEET

In accordance with 29 CFR 1910.1200

Product: Copaiba Balsam Oil, Brazil

Version: 2

5. FIRE-FIGHTING MEASURES

Extinguishing media

Suitable media: Carbon dioxide, Dry chemical, Foam.

Specific hazards arising from the chemical

In case of fire, may be liberated: Carbon monoxide, Unidentified organic compounds.

Protective Equipment and Precautions for Firefighters

In case of insufficient ventilation, wear suitable respiratory equipment.

6. ACCIDENTAL RELEASE MEASURES

Personal precautions, protective equipment and emergency procedures:

Avoid inhalation. Avoid contact with skin and eyes. See protective measures under Section 7 and 8.

Methods and material for containment and cleaning up:

Remove ignition sources. Provide adequate ventilation. Avoid excessive inhalation of vapours. Contain spillage immediately by use of sand or inert powder. Dispose of according to local regulations.

7. HANDLING AND STORAGE

Precautions for safe handling:

Keep away from heat, sparks, open flames and hot surfaces. - No smoking. Use personal protective equipment as required. Use in accordance with good manufacturing and industrial hygiene practices. Use in areas with adequate ventilation. Do not eat, drink or smoke when using this product.

Conditions for safe storage, including any incompatibilities:

Store in a well-ventilated place. Keep container tightly closed. Keep cool. Ground/bond container and receiving equipment. Use explosion-proof electrical, ventilating and lighting equipment. Use only non-sparking tools. Take precautionary measures against static discharge.

8. EXPOSURE CONTROLS/PERSONAL PROTECTION

Control parameters

Exposure guidelines

This product does not contain any hazardous materials with occupational exposure limits established by the region specific regulatory bodies.

Other exposure guidelines

No information available

Exposure controls

Engineering measures



SAFETY DATA SHEET

In accordance with 29 CFR 1910.1200

Product: Copaiba Balsam Oil, Brazil

Version: 2

Showers, eyewash stations, ventilation systems.

Individual protection measures, such as personal protective equipment

Eye/Face and Skin Protection

Wear protective gloves/eye protection/face protection, and suitable protective clothing

Respiratory protection

If exposure limits are exceeded or irritation is experienced, NIOSH/MSHA approved respiratory protection should be worn. Positive-pressure supplied air respirators may be required for high airborne contaminant concentrations. Respiratory protection must be provided in accordance with current local regulations. A NIOSH-approved air-purifying respirator with an organic vapor cartridge or canister may be permissible under certain circumstances where airborne concentrations are expected to exceed exposure limits. Protection provided by air-purifying respirators is limited. Use a positive pressure, air-supplied respirator if there is any potential for uncontrolled release, exposure levels are not known or any other circumstances where air-purifying respirators may not provide adequate protection.

Hygiene measures

Handle in accordance with good industrial hygiene and safety practice.

9. PHYSICAL AND CHEMICAL PROPERTIES

Physical and chemical properties

Appearance:	Not determined
Odor:	Not determined
Odor threshold:	Not determined
pH:	Not determined
Melting point / freezing point:	Not determined
Initial boiling point / range:	Not determined
Flash point:	212 °F / 100 °C
Evaporation rate:	Not determined
Flammability (solid, gas):	Not determined
Upper/lower flammability or explosive limits:	Product does not present an explosion hazard
Vapor pressure:	Not determined
Vapor density:	Not determined
Relative density:	Not determined
Solubility(ies):	Not determined
Partition coefficient: n-octanol/water:	Not determined
Auto-ignition temperature:	Not determined
Decomposition temperature:	Not determined
Viscosity:	Not determined
<u>Other information:</u>	None available



SAFETY DATA SHEET

In accordance with 29 CFR 1910.1200

Product: Copaiba Balsam Oil, Brazil

Version: 2

10. STABILITY AND REACTIVITY

Reactivity:

Presents no significant reactivity hazard, by itself or in contact with water.

Chemical stability:

Good stability under normal storage conditions.

Possibility of hazardous reactions:

Not expected under normal conditions of use.

Conditions to avoid:

Avoid extreme heat.

Incompatible materials:

Avoid contact with strong acids, alkalis or oxidising agents.

Hazardous decomposition products:

Not expected.

11. TOXICOLOGICAL INFORMATION

Information on toxicological effects

Acute Toxicity:

Acute Toxicity Oral

Based on available data the classification criteria are not met.

Not Applicable

Acute Toxicity Dermal

Not Applicable

Acute Toxicity Inhalation

Not Available

Skin corrosion/irritation:

Based on available data the classification criteria are not met.

Serious eye damage/irritation:

Based on available data the classification criteria are not met.

Respiratory or skin sensitisation:

Sensitization - Skin Category 1

Germ cell mutagenicity:

Based on available data the classification criteria are not met.

Carcinogenicity:

Based on available data the classification criteria are not met.

Reproductive toxicity:

Based on available data the classification criteria are not met.

STOT-single exposure:

Based on available data the classification criteria are not met.

STOT-repeated exposure:

Based on available data the classification criteria are not met.

Aspiration hazard:

Additional Information

None available

12. ECOLOGICAL INFORMATION

Ecotoxicity:

May cause long lasting harmful effects to aquatic life.

SAFETY DATA SHEET

In accordance with 29 CFR 1910.1200

Product: Copaiba Balsam Oil, Brazil

Version: 2

Persistence and degradability: Not available

Bioaccumulative potential: Not available

Mobility in soil: Not available

Other adverse effects: Not available

13. DISPOSAL CONSIDERATIONS

Waste treatment

Dispose of in accordance with local regulations. Avoid disposing into drainage systems and into the environment. Empty containers should be taken to an approved waste handling site for recycling or disposal.

14. TRANSPORT INFORMATION

	14.1 UN number:	14.2 UN Proper Shipping Name:	14.3 Transport hazard class(es):	Sub Risk:	14.4. Packing Group:
UN Model Regulations	None	-			-
US DOT	None	-			-
US DOT (Bulk)	None	-			-
IMDG	None	-			-
ADR,RID,ADN	None	-			-
ICAO TI	None	-			-

US DOT refers to domestic transport by road/rail within the 48 ground states

US DOT (Bulk) refers to domestic bulk transport by road/rail within the 48 ground states.

Environmental hazards: Not environmentally hazardous for transport

Special precautions for user: None additional

Transport in bulk according to Annex II of MARPOL73/78 and the IBC Code:

Not classified

15. REGULATORY INFORMATION

Safety, health and environmental regulations/legislation specific for the substance or mixture

None additional

Additional information

None additional



Artisan
AROMATICS

SAFETY DATA SHEET

In accordance with 29 CFR 1910.1200

Product: Copaiba Balsam Oil, Brazil

Version: 2

16. OTHER INFORMATION

Key to revisions:

3 Composition/information on ingredients

The information in this safety data sheet is to the best of our knowledge true and accurate but all data, instructions, recommendations and/or suggestions are made without guarantee.

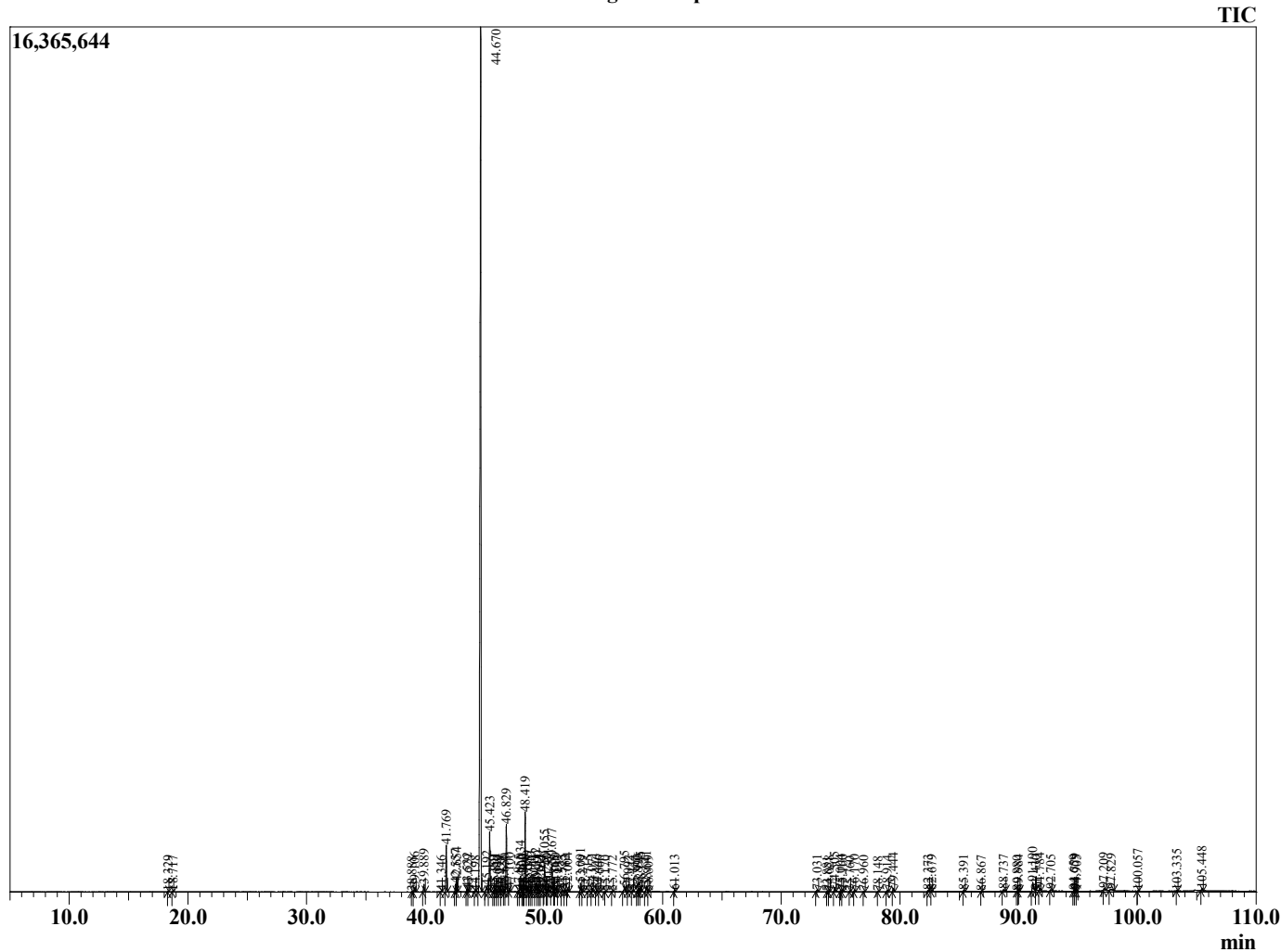
Sample Information

Analyzed by : J. Scalf
 Analyzed : 10/06/2022 5:10:14 PM
 Sample Type : Essential Oil
 Sample Name : CopLan3
 Injection Volume : 0.10 µL
 Lot Number : L0F0927R
 Instrument ID : GC-3

Peak Report TIC

R.Time	Name	Area%
18.329	Limonene	0.04
18.717	cis-beta-Ocimene	0.05
38.888	Elemene isomer	0.03
39.106	delta-Elemene	0.26
39.889	alpha-Cubebene	0.44
41.346	alpha-Ylangene	0.06
41.769	alpha-Copaene	2.66
42.557	beta-Cubebene	0.47
42.654	beta-Elemene	0.54
43.532	Cyperene	0.20
43.629	cis-beta-Caryophyllene	0.07
44.198	cis-alpha-Bergamotene	0.05
44.670	trans-beta-Caryophyllene	67.23
45.192	gamma-Elemene	0.50
45.423	trans-alpha-Bergamotene	3.52
45.759	Aromadendrene	0.06
45.891	Sesquisabinene	0.19
46.079	13-nor-Eudesm-5-en-11-one	0.06
46.298	epi-beta-Santalene	0.04
46.428	trans-Muurola-3,5-diene	0.02
46.650	trans-beta-Farnesene	0.12
46.829	alpha-Humulene	3.99
47.100	Alloaromodendrene	0.20
47.855	cis-Cadina-1(6),4-diene	0.09
48.034	trans-Cadina-1(6),4-diene	1.01
48.202	Unidentified	0.09
48.300	alpha-Amorphene	0.08
48.419	Germacrene D	4.76
48.589	trans-beta-Bergamotene	0.38
48.775	delta-Selinene	0.04
48.910	beta-Selinene	0.31
49.111	trans-Murrola-4(14),5-diene	0.23
49.312	Bicyclogermacrene	0.64
49.490	alpha-Muurolene	0.35
49.611	cis-alpha-Bisabolene	0.15
49.764	Cadinene analogue	0.12
50.055	beta-Bisabolene	1.64
50.240	cis-gamma-Bisabolene	0.11
50.371	gamma-Cadinene	0.38
50.677	delta-Cadinene	1.58
50.865	cis-Calamenene	0.02
51.009	beta-Sesquiphellandrene	0.29
51.193	trans-gamma-Bisabolene	0.03
51.525	trans-Cadina-1,4-diene	0.12
51.783	alpha-Cadinene	0.14
52.004	trans-alpha-Bisabolene	0.23
53.091	Germacrene B	0.52
53.279	beta-Calacorene	0.04
53.715	Maaliol	0.04
54.071	Caryophyllene alcohol	0.24
54.446	Caryophyllene oxide	0.13
54.666	Globulol	0.04
55.170	Viridiflorol	0.03
55.772	Unidentified	0.04
56.795	Humulane-1,6-dien-3-ol	0.39
57.092	1-Epicubenol	0.06
57.444	Unidentified	0.06
57.890	epi-alpha-Cadinol	0.09
57.996	epi-alpha-Muurolol	0.21
58.145	delta-Cadinol	0.28
58.641	alpha-Cadinol	0.40
58.809	Selin-11-en-4-alpha-ol	0.05

Chromatogram CopLan3



R.Time	Name	Area%
61.013	Unidentified	0.09
73.031	Unidentified	0.16
73.881	Unidentified	0.02
74.028	Unidentified	0.04
74.505	Kolavelool	0.31
75.004	Unidentified	0.10
75.160	Unidentified	0.09
75.760	Unidentified	0.01
76.170	Unidentified	0.11
76.960	Unidentified	0.04
78.148	Unidentified	0.02
78.914	Manool	0.10
79.444	Unidentified	0.23
82.373	Linoleic acid	0.10
82.679	Oleic acid	0.05
85.391	Unidentified	0.09
86.867	Unidentified	0.02
88.737	Unidentified	0.16
89.880	Unidentified	0.03
89.984	Unidentified	0.07
91.190	Copalol	0.77
91.430	Unidentified	0.01
91.784	Kolavenol	0.14
92.705	Unidentified	0.09
94.659	Unidentified	0.06
94.779	Unidentified	0.13
94.905	Unidentified	0.04
97.209	Unidentified	0.22
97.829	Unidentified	0.27
100.057	Unidentified	0.03
103.335	Unidentified	0.03
105.448	Unidentified	0.17
		100.00