

SAFETY DATA SHEET

In accordance with 29 CFR 1910.1200

Product: Litsea cubeba Oil, China
Version: 2

1. IDENTIFICATION

Product Identifier

Product identifier: Litsea cubeba Oil, China; CAS: 68855-99-2
Other identifiers: Litsea cubeba Oil, China LitCub2 Litsea cubeba

Recommended use of the chemical and restrictions on use

Product uses: Essential Oil

Supplier Details

Company name: Artisan Aromatics
Company address: 1708 Lena Street, #103
Santa Fe, NM 87505
Contact: Stephanie Ariel
E-Mail address: hello@artisanaromatics.com
Company phone: 505-231-9439

Emergency telephone number

Emergency phone: ChemTel: 1-800-255-3924 (Domestic)

2. HAZARD IDENTIFICATION

Classification

This product is classified under 29CFR 1910.1200(d) as follows:

This material is considered hazardous by the OSHA Hazard Communication Standard (29 CFR 1910.1200)

Class and category of danger: Flammable Liquid, Hazard Category 4
Skin Corrosion / Irritation Category 2
Eye Damage / Irritation Category 2A
Sensitization - Skin Category 1
Aspiration Hazard Category 1

Signal word: Danger

Hazard statements: Combustible liquid.
May be fatal if swallowed and enters airways.
Causes skin irritation.
May cause an allergic skin reaction.
Causes serious eye irritation.

M factor: None

SAFETY DATA SHEET

In accordance with 29 CFR 1910.1200

Product: Litsea cubeba Oil, China

Version: 2

Pictograms:



Precautionary statements:

Keep away from heat, sparks, open flames and hot surfaces. - No smoking.
Avoid breathing vapour or dust.
Wash hands and other contacted skin thoroughly after handling.
Contaminated work clothing should not be allowed out of the workplace.
Wear protective gloves/eye protection/face protection.
IF SWALLOWED: Immediately call a POISON CENTER or doctor/physician.
IF ON SKIN: Wash with plenty of soap and water.
IF IN EYES: Rinse cautiously with water for several minutes. Remove contact lenses, if present and easy to do. Continue rinsing.
Do not induce vomiting.
If skin irritation or rash occurs: Get medical advice/attention.
If eye irritation persists: Get medical advice/attention.
Take off contaminated clothing and wash before reuse.
In case of fire: Use carbon dioxide, dry chemical, foam for extinction.
Store in a well-ventilated place. Keep cool.
Store locked up.
Dispose of contents/container to approved disposal site, in accordance with local regulations.

Hazards not otherwise classified (HNOC) None

3. COMPOSITION/INFORMATION ON INGREDIENTS

Substances

Product identifier: Litsea cubeba Oil, China; CAS: 68855-99-2



SAFETY DATA SHEET

In accordance with 29 CFR 1910.1200

Product: Litsea cubeba Oil, China

Version: 2

Contains:

Name	CAS	%	GHS Classification
Citral	5392-40-5	50-100%	Skin Irrit. 2-Eye Irrit. 2A-Skin Sens. 1; H315-H317-H319
d-Limonene	5989-27-5	10-<20%	Flam. Liq. 3-Skin Irrit. 2-Skin Sens. 1B- Asp. Tox 1;H226-H304-H315-H317
Isocitral #2	72203-98-6	1-<5%	Skin Irrit. 2-Eye Irrit. 2A-Skin Sens. 1B; H315-H317-H319
Myrcene	123-35-3	1-<5%	Flam. Liq. 3-Skin Irrit. 2-Eye Irrit. 2A- Asp. Tox 1;H226-H304-H315-H319
Linalool	78-70-6	1-<5%	Flam. Liq. 4-Skin Irrit. 2-Eye Irrit. 2A- Skin Sens. 1B;H227-H315-H317-H319
alpha-Pinene	80-56-8	1-<5%	Flam. Liq. 3-Acute Tox. 4-Skin Irrit. 2- Skin Sens. 1B-Asp. Tox 1;H226-H302- H304-H315-H317
beta-Pinene	127-91-3	0.1-<1%	Flam. Liq. 3-Skin Irrit. 2-Skin Sens. 1B- Asp. Tox 1;H226-H304-H315-H317
Citronellal	106-23-0	0.1-<1%	Flam. Liq. 4-Skin Irrit. 2-Eye Irrit. 2A- Skin Sens. 1B;H227-H315-H317-H319
Geraniol	106-24-1	0.1-<1%	Skin Irrit. 2-Eye Dam. 1-Skin Sens. 1; H315-H317-H318
beta-Caryophyllene	87-44-5	0.1-<1%	Skin Sens. 1B-Asp. Tox 1;H304-H317
Eucalyptol	470-82-6	0.1-<1%	Flam. Liq. 3-Skin Sens. 1B;H226-H317
Nerol	106-25-2	0.1-<1%	Skin Irrit. 2-Eye Irrit. 2A-Skin Sens. 1B; H315-H317-H319
Isocitral #1	72203-97-5	0.1-<1%	Skin Irrit. 2-Eye Irrit. 2A-Skin Sens. 1B; H315-H317-H319
delta-3-Carene	13466-78-9	<0.1%	Flam. Liq. 3-Skin Irrit. 2-Skin Sens. 1- Asp. Tox 1;H226-H304-H315-H317

The exact percentage concentrations of components are being withheld as a trade secret.

4. FIRST-AID MEASURES

Description of first aid measures

Inhalation: Remove from exposure site to fresh air, keep at rest, and obtain medical attention.

Eye exposure: IF IN EYES: Rinse cautiously with water for several minutes. Remove contact lenses, if present and easy to do. Continue rinsing.

Skin exposure: IF ON SKIN: Wash with plenty of soap and water.

Ingestion: IF SWALLOWED: Immediately call a POISON CENTER or doctor/physician.

Most important symptoms and effects, both acute and delayed

May be fatal if swallowed and enters airways.

Causes skin irritation.

May cause an allergic skin reaction.

Causes serious eye irritation.

Indication of immediate medical attention and special treatment needed, if necessary

Treat symptomatically



SAFETY DATA SHEET

In accordance with 29 CFR 1910.1200

Product: Litsea cubeba Oil, China

Version: 2

5. FIRE-FIGHTING MEASURES

Extinguishing media

Suitable media: Carbon dioxide, Dry chemical, Foam.

Specific hazards arising from the chemical

In case of fire, may be liberated: Carbon monoxide, Unidentified organic compounds.

Protective Equipment and Precautions for Firefighters

In case of insufficient ventilation, wear suitable respiratory equipment.

6. ACCIDENTAL RELEASE MEASURES

Personal precautions, protective equipment and emergency procedures:

Avoid inhalation. Avoid contact with skin and eyes. See protective measures under Section 7 and 8.

Methods and material for containment and cleaning up:

Remove ignition sources. Provide adequate ventilation. Avoid excessive inhalation of vapours. Contain spillage immediately by use of sand or inert powder. Dispose of according to local regulations.

7. HANDLING AND STORAGE

Precautions for safe handling:

Keep away from heat, sparks, open flames and hot surfaces. - No smoking. Use personal protective equipment as required. Use in accordance with good manufacturing and industrial hygiene practices. Use in areas with adequate ventilation. Do not eat, drink or smoke when using this product.

Conditions for safe storage, including any incompatibilities:

Store in a well-ventilated place. Keep container tightly closed. Keep cool. Ground/bond container and receiving equipment. Use explosion-proof electrical, ventilating and lighting equipment. Use only non-sparking tools. Take precautionary measures against static discharge.

8. EXPOSURE CONTROLS/PERSONAL PROTECTION

Control parameters

Exposure guidelines

This product does not contain any hazardous materials with occupational exposure limits established by the region specific regulatory bodies.

Other exposure guidelines

No information available

Exposure controls

Engineering measures



SAFETY DATA SHEET

In accordance with 29 CFR 1910.1200

Product: Litsea cubeba Oil, China

Version: 2

Showers, eyewash stations, ventilation systems.

Individual protection measures, such as personal protective equipment

Eye/Face and Skin Protection

Wear protective gloves/eye protection/face protection, and suitable protective clothing

Respiratory protection

If exposure limits are exceeded or irritation is experienced, NIOSH/MSHA approved respiratory protection should be worn. Positive-pressure supplied air respirators may be required for high airborne contaminant concentrations. Respiratory protection must be provided in accordance with current local regulations. A NIOSH-approved air-purifying respirator with an organic vapor cartridge or canister may be permissible under certain circumstances where airborne concentrations are expected to exceed exposure limits. Protection provided by air-purifying respirators is limited. Use a positive pressure, air-supplied respirator if there is any potential for uncontrolled release, exposure levels are not known or any other circumstances where air-purifying respirators may not provide adequate protection.

Hygiene measures

Handle in accordance with good industrial hygiene and safety practice.

9. PHYSICAL AND CHEMICAL PROPERTIES

Physical and chemical properties

Appearance:	Not determined
Odor:	Not determined
Odor threshold:	Not determined
pH:	Not determined
Melting point / freezing point:	Not determined
Initial boiling point / range:	Not determined
Flash point:	149 °F / 65 °C
Evaporation rate:	Not determined
Flammability (solid, gas):	Not determined
Upper/lower flammability or explosive limits:	Product does not present an explosion hazard
Vapor pressure:	Not determined
Vapor density:	Not determined
Relative density:	Not determined
Solubility(ies):	Not determined
Partition coefficient: n-octanol/water:	Not determined
Auto-ignition temperature:	Not determined
Decomposition temperature:	Not determined
Viscosity:	Not determined
<u>Other information:</u>	None available



Artisan
AROMATICS

SAFETY DATA SHEET

In accordance with 29 CFR 1910.1200

Product: Litsea cubeba Oil, China

Version: 2

10. STABILITY AND REACTIVITY

Reactivity:

Presents no significant reactivity hazard, by itself or in contact with water.

Chemical stability:

Good stability under normal storage conditions.

Possibility of hazardous reactions:

Not expected under normal conditions of use.

Conditions to avoid:

Avoid extreme heat.

Incompatible materials:

Avoid contact with strong acids, alkalis or oxidising agents.

Hazardous decomposition products:

Not expected.

11. TOXICOLOGICAL INFORMATION

Information on toxicological effects

Acute Toxicity:	Based on available data the classification criteria are not met.
Acute Toxicity Oral	>5000
Acute Toxicity Dermal	4800 mg/kg
Acute Toxicity Inhalation	Not Available
Skin corrosion/irritation:	Skin Corrosion / Irritation Category 2
Serious eye damage/irritation:	Eye Damage / Irritation Category 2A
Respiratory or skin sensitisation:	Sensitization - Skin Category 1
Germ cell mutagenicity:	Based on available data the classification criteria are not met.
Carcinogenicity:	Based on available data the classification criteria are not met.
Reproductive toxicity:	Based on available data the classification criteria are not met.
STOT-single exposure:	Based on available data the classification criteria are not met.
STOT-repeated exposure:	Based on available data the classification criteria are not met.
Aspiration hazard:	

Additional Information

None available

12. ECOLOGICAL INFORMATION

Ecotoxicity:

Toxic to aquatic life with long lasting effects.



SAFETY DATA SHEET

In accordance with 29 CFR 1910.1200

Product: Litsea cubeba Oil, China

Version: 2

Persistence and degradability: Not available

Bioaccumulative potential: Not available

Mobility in soil: Not available

Other adverse effects: Not available

13. DISPOSAL CONSIDERATIONS

Waste treatment

Dispose of in accordance with local regulations. Avoid disposing into drainage systems and into the environment. Empty containers should be taken to an approved waste handling site for recycling or disposal.

14. TRANSPORT INFORMATION

	14.1 UN number:	14.2 UN Proper Shipping Name:	14.3 Transport hazard class(es):	Sub Risk:	14.4. Packing Group:
UN Model Regulations	UN3082	ENVIRONMENTALLY HAZARDOUS SUBSTANCE, LIQUID, N.O.S. (d-Limonene, alpha-Pinene)	9	-	III
US DOT	None	-			-
US DOT (Bulk)	None	-			-
IMDG	UN3082	ENVIRONMENTALLY HAZARDOUS SUBSTANCE, LIQUID, N.O.S. (d-Limonene, alpha-Pinene) MARINE POLLUTANT	9	-	III
ADR,RID,ADN	UN3082	ENVIRONMENTALLY HAZARDOUS SUBSTANCE, LIQUID, N.O.S. (d-Limonene, alpha-Pinene)	9	-	III
ICAO TI	UN3082	ENVIRONMENTALLY HAZARDOUS SUBSTANCE, LIQUID, N.O.S. (d-Limonene, alpha-Pinene)	9	-	III

US DOT refers to domestic transport by road/rail within the 48 ground states

US DOT (Bulk) refers to domestic bulk transport by road/rail within the 48 ground states.

Environmental hazards: This is an environmentally hazardous substance.

Special precautions for user: None additional

Transport in bulk according to Annex II of MARPOL73/78 and the IBC Code:

Not applicable

SAFETY DATA SHEET

In accordance with 29 CFR 1910.1200

Product: Litsea cubeba Oil, China

Version: 2

15. REGULATORY INFORMATION

Safety, health and environmental regulations/legislation specific for the substance or mixture

RIFM ID Number: 910-G2.12

LM Unique Identifier: LM7805

Additional information

None additional

16. OTHER INFORMATION

Key to revisions:

Product identifier

The information in this safety data sheet is to the best of our knowledge true and accurate but all data, instructions, recommendations and/or suggestions are made without guarantee.

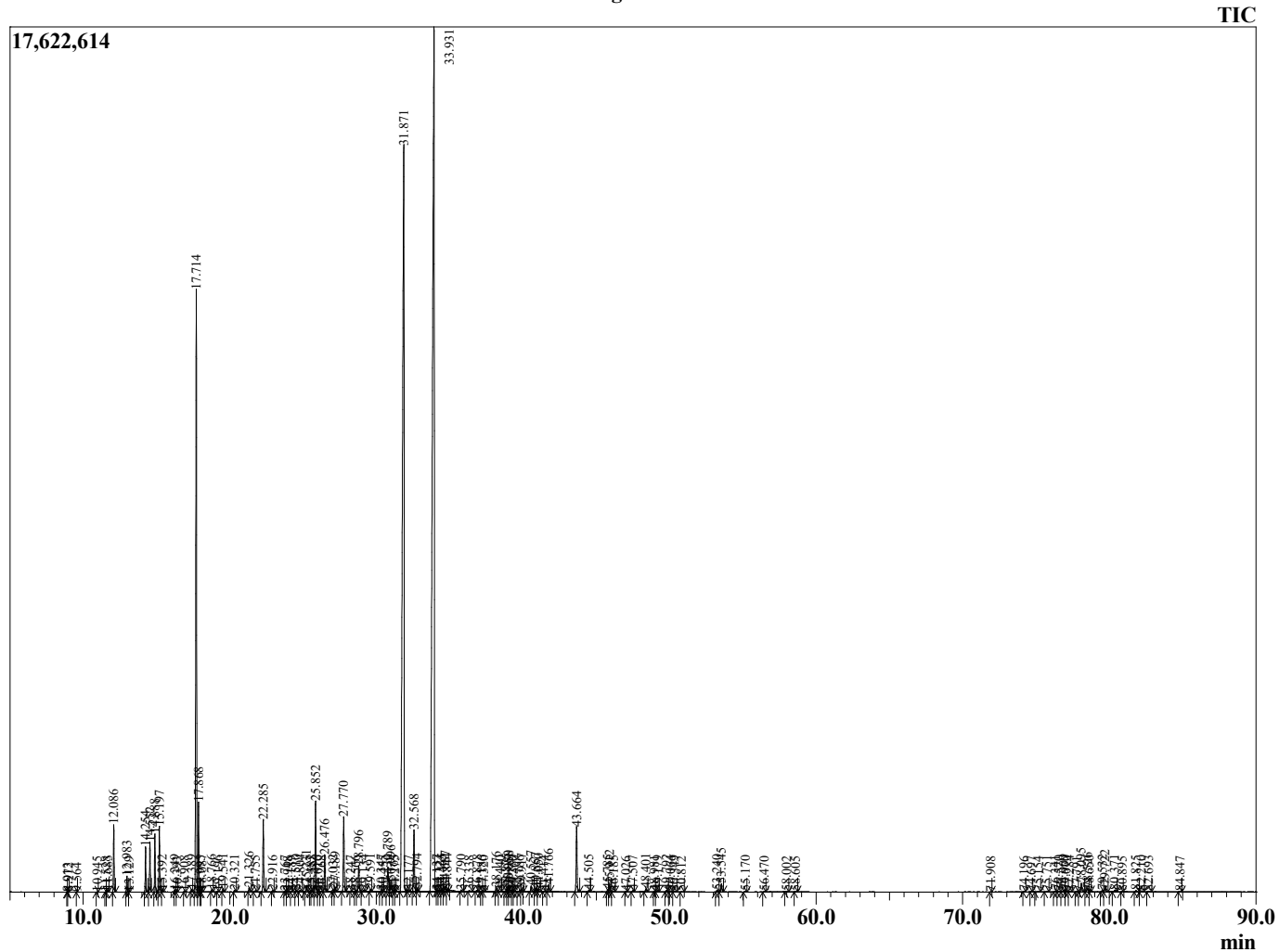
Sample Information

Analyzed by : A. Mattingly
 Analyzed : 2/17/2022 6:17:51 AM
 Sample Type : Essential Oil
 Sample Name : LitCub2
 Injection Volume : 0.10 µL
 Lot Number : HOE1108F [1-4]
 Instrument ID : GC-2

Peak Report TIC

R.Time	Name	Area%
8.913	Unidentified	0.00
8.972	Unidentified	0.00
9.564	Unidentified	0.00
10.945	Unidentified	0.00
11.528	Tricyclene	0.00
11.683	alpha-Thujene	0.02
12.086	alpha-Pinene	1.03
12.983	Camphene	0.26
13.129	2-Octanone	0.00
14.254	Sabinene	0.75
14.552	beta-Pinene	0.83
14.888	6-Methyl hept-5-en-2-one	0.99
15.197	Myrcene	1.12
15.392	Sulcatol	0.04
16.249	alpha-Phellandrene	0.04
16.393	delta-3-Carene	0.01
16.908	alpha-Terpinene	0.02
17.389	para-Cymene	0.04
17.714	Limonene	11.89
17.868	1,8-Cineole	1.51
17.995	Dihydromyrcenol	0.01
18.087	(Z)-beta-Ocimene	0.04
18.766	(E)-beta-Ocimene	0.04
19.196	Bergamal	0.01
19.541	gamma-Terpinene	0.06
20.321	trans-Sabinene hydrate	0.03
21.326	Terpinolene	0.09
21.755	Unidentified+Rosefuran	0.04
22.285	Linalool	1.39
22.916	Unidentified	0.03
23.767	trans-para-Mentha-2,8-dien-1-ol	0.02
23.948	cis-para-Menth-2-en-1-ol	0.01
24.189	Unidentified	0.01
24.510	cis-Limonene oxide	0.03
24.804	cis-para-Mentha-2,8-dien-1-ol +trans-Limone	0.04
25.231	exo-Isocitral	0.14
25.487	Camphor	0.01
25.588	Isopulegol	0.03
25.852	Citronellal	1.79
26.010	Unidentified	0.01
26.268	Neoisopulegol	0.02
26.476	Isoneral	0.74
27.032	Isoborneol+delta-Terpineol	0.06
27.189	Borneol	0.09
27.770	Isogeranial	1.61
28.247	para-Cymen-8-ol	0.01
28.566	Methyl salicylate	0.02
28.796	alpha-Terpineol	0.58
29.134	Unidentified	0.04
29.591	cis-Carveol	0.04
30.347	Unidentified	0.03
30.455	trans-Carveol	0.01
30.789	Nerol	0.56
30.996	Citronellol	0.29
31.163	Isogeraniol	0.03
31.275	Unidentified	0.01
31.871	Neral	28.77
32.177	Carvone	0.02
32.568	Geraniol	1.39
32.794	Piperitone	0.05
33.931	Geranial	38.50
34.137	Citronellyl formate	0.03

Chromatogram LitCub2



R.Time	Name	Area%
34.324	Unidentified	0.05
34.465	Unidentified	0.04
34.687	trans-Carvone oxide	0.10
34.844	Unidentified	0.04
35.790	Geranyl formate	0.03
36.338	Citronellic acid	0.03
36.878	Neric acid	0.03
37.186	Unidentified	0.01
37.320	Methyl geranate	0.01
38.176	Unidentified	0.10
38.440	Unidentified	0.02
38.875	Unidentified	0.04
38.980	Unidentified+alpha-Terpinyl acetate	0.16
39.058	Geranic acid	0.14
39.279	Eugenol	0.02
39.360	Unidentified	0.02
39.786	Neryl acetate	0.03
39.917	Unidentified	0.06
40.557	Unidentified	0.12
40.867	alpha-Copaene	0.07
41.050	Geranyl acetate	0.07
41.414	Unidentified	0.01
41.766	beta-Elemene	0.16
43.664	trans-beta-Caryophyllene	1.50
44.505	Unidentified	0.03
45.785	(E)-beta-Farnesene	0.05
45.912	alph-Humulene	0.15
46.185	Alloaromodendrene	0.01
47.026	Selina-4,11-diene	0.01
47.507	Germacrene D	0.03
48.401	Bicyclogermacrene	0.09
48.981	(E,E)-alpha-Farnesene	0.01
49.179	beta-Bisabolene	0.04
49.792	delta-Cadinene	0.04
50.064	Unidentified	0.03
50.349	Unidentified	0.02
50.812	Unidentified	0.01
53.240	Spathulenol	0.04
53.545	Caryophyllene oxide	0.21
55.170	Humulene epoxide II	0.02
56.470	Unidentified	0.01
58.002	Unidentified	0.02
58.605	Unidentified	0.01
71.908	Unidentified	0.00
74.196	Unidentified	0.01
74.697	Unidentified	0.01
75.154	Unidentified	0.01
75.751	Unidentified	0.02
76.341	Unidentified	0.03
76.570	Unidentified	0.02
76.909	Unidentified	0.05
77.070	Unidentified	0.04
77.284	Unidentified	0.03
77.791	Unidentified	0.01
78.095	Unidentified	0.22
78.526	Unidentified	0.11
78.650	Unidentified	0.02
79.532	Unidentified	0.04
79.722	Unidentified	0.16
80.371	Unidentified	0.06
80.895	Unidentified	0.01
81.825	Unidentified isomer I	0.04
82.210	Unidentified isomer I	0.03

R.Time	Name	Area%
82.693	Unidentified	0.03
84.847	Unidentified	0.02
		100.00